

# SVE/PLUS/EW



EC TECHNOLOGY WITH INTEGRATED VSD



**Low noise in-line duct extractor fans mounted inside a 40 mm phonoabsorbent acoustic insulated casing**



- Fan:**
- Acoustic casing covered with sound absorbing material.
  - All models equipped with a backward curved impeller.
  - Standardised inlet and outlet flanges allowing for easy installation in ducts.
  - Fitted with a folding inspection hatch.
  - Support feet integrated into the box which facilitates its assembly.
  - Linear airflow direction.
  - Adjustable speed via a built-in 10 k $\Omega$  potentiometer MTP010, or an external 0-10 V signal.

- Motor:**
- EC Technology external rotor motors with high efficiency and built-in variable speed drive controlled by 0-10 V signal.

- Single-phase 200-240 V 50/60 Hz, IP54 protection. Except SVE/PLUS/EW-400/H model, 200-277 V 50/60 Hz. IP55 protection.
- Maximum temperature of air to be carried: -25 °C +60 °C. Except model SVE/PLUS/EW-200/H, -25 °C +45 °C.

**Finish:**

- Anti-corrosive in galvanized steel sheet.



## Order code



## Technical characteristics

Model	Speed (r/min)	Maximum admissible current (A)	Max. electric power	Maximum flow rate	Sound pressure level at 50% of max. speed*	Approx. weight (Kg)	According ErP
		230V	(kW)	(m <sup>3</sup> /h)	dB (A)		
SVE/PLUS/EW-100/H	3570	1.01	0.120	399	38	11	2018
SVE/PLUS/EW-125/H	3570	1.01	0.120	480	36	11	2018
SVE/PLUS/EW-150/H	3570	1.01	0.120	498	33	11	2018
SVE/PLUS/EW-160/H	3570	1.01	0.120	534	31	11	2018
SVE/PLUS/EW-200/H	3265	1.35	0.176	948	36	14	2018
SVE/PLUS/EW-250/H	2850	1.35	0.180	1187	38	14	2018
SVE/PLUS/EW-315/H	1920	1.35	0.175	1430	29	23	2018
SVE/PLUS/EW-350/H	1460	1.45	0.190	1983	35	32	2018
SVE/PLUS/EW-400/H	1550	2.00	0.460	2856	38	39	2018

\* Irradiated sound pressure level in dB(A) at a distance of 1.5 m and at maximum flow rate.



## Erp. (Energy Related Products)

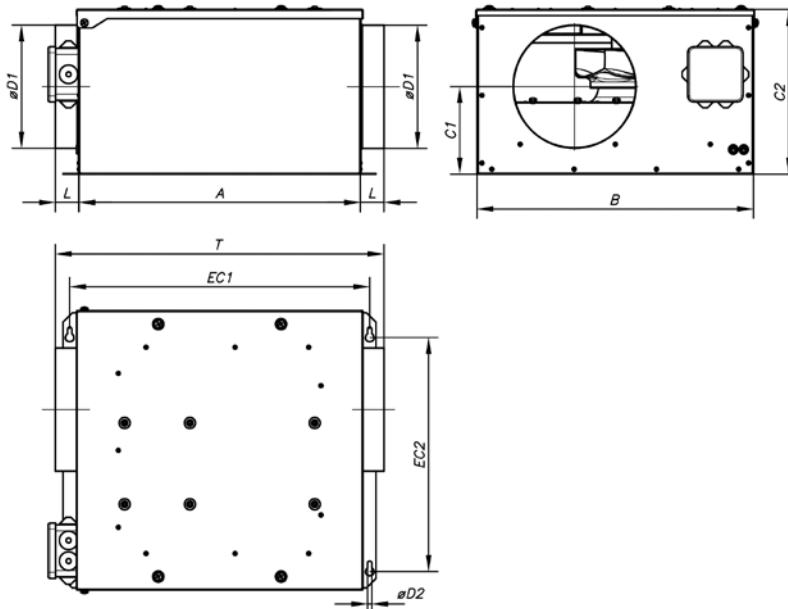
Information on Directive 2009/125/EC can be downloaded from the SODECA website or the QuickFan selector programme.

### Acoustic characteristics

Sound power spectrum Lw(A) in dB(A) per Hz frequency band  
Irradiated values at maximum speed and medium flow rate.

	63	125	250	500	1000	2000	4000	8000		63	125	250	500	1000	2000	4000	8000
SVE/PLUS/EW-100/H	38	43	45	47	49	53	47	43	SVE/PLUS/EW-250/H	46	44	43	45	55	35	34	30
SVE/PLUS/EW-125/H	37	43	45	48	50	53	48	44	SVE/PLUS/EW-315/H	30	44	33	32	44	25	24	19
SVE/PLUS/EW-150/H	32	42	41	51	44	44	44	40	SVE/PLUS/EW-350/H	37	50	40	42	36	29	26	14
SVE/PLUS/EW-160/H	33	43	42	47	45	46	45	41	SVE/PLUS/EW-400/H	37	52	41	42	34	29	27	27
SVE/PLUS/EW-200/H	50	50	43	50	44	42	45	45									

### Dimensions mm



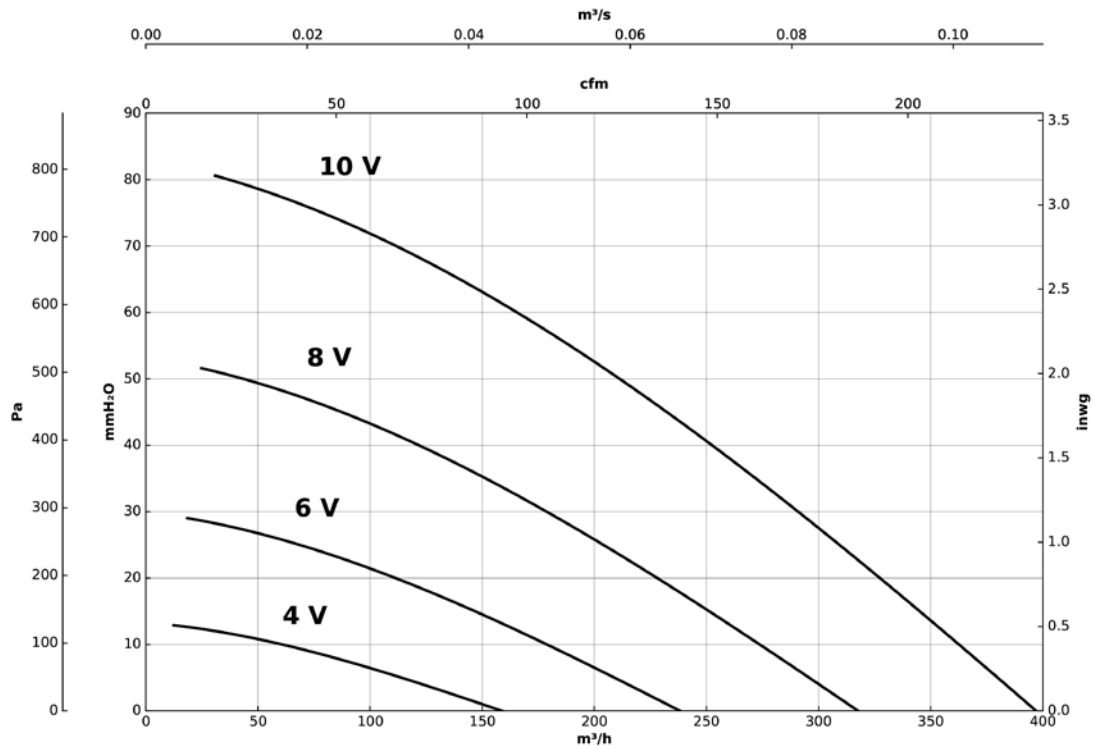
	A	B	C1	C2	øD1	L	øD2	EC1	EC2	T
SVE/PLUS/EW-100/H	380	380	174.5	255	100	37.5	7	405	305	455
SVE/PLUS/EW-125/H	380	380	164.5	255	125	37.5	7	405	305	455
SVE/PLUS/EW-150/H	380	380	160	255	150	37.5	7	405	305	455
SVE/PLUS/EW-160/H	380	380	155	255	160	37.5	7	405	305	455
SVE/PLUS/EW-200/H	460	450	140	265	200	37.5	7	485	380	535
SVE/PLUS/EW-250/H	460	450	165	310	250	52.5	7	485	380	565
SVE/PLUS/EW-315/H	565	540	210	390	315	57.5	9	595	440	680
SVE/PLUS/EW-350/H	650	600	265	465	350	57.5	9	680	525	765
SVE/PLUS/EW-400/H	650	680	280	500	400	80	9	680	600	810

### Characteristic curves

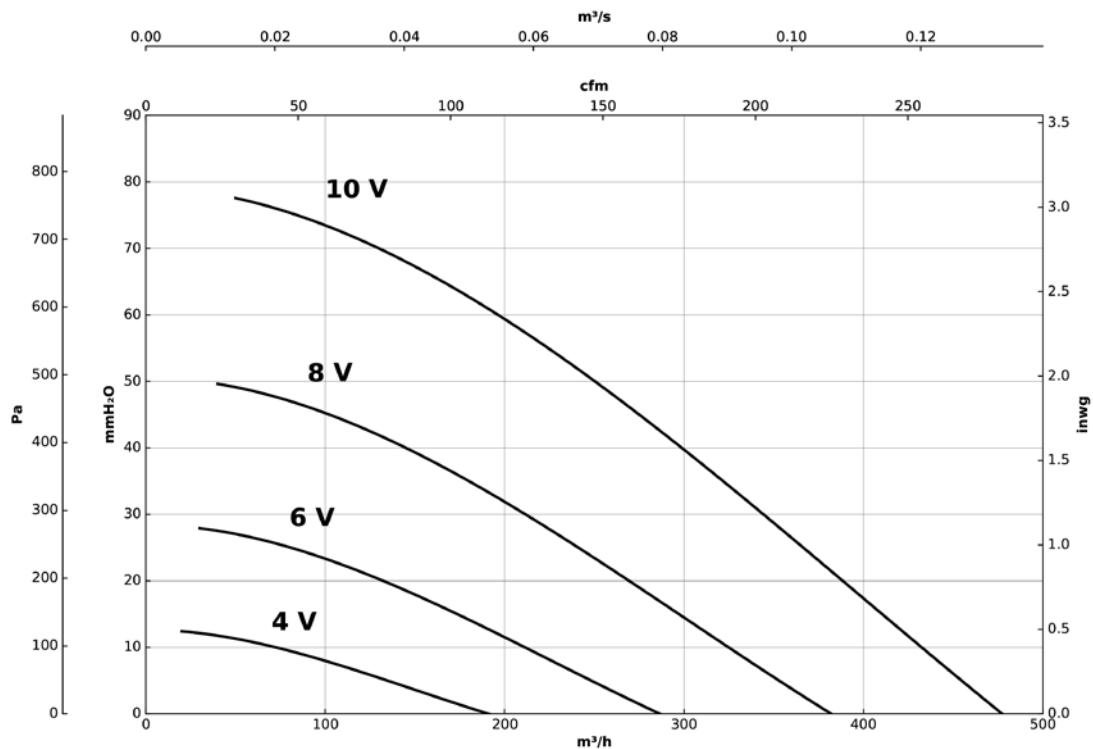
Q= Flow rate in m<sup>3</sup>/h, m<sup>3</sup>/s and cfm

Pe= Static pressure in mm H<sub>2</sub>O, Pa and inwg

#### SVE/PLUS/EW-100/H



#### SVE/PLUS/EW-125/H

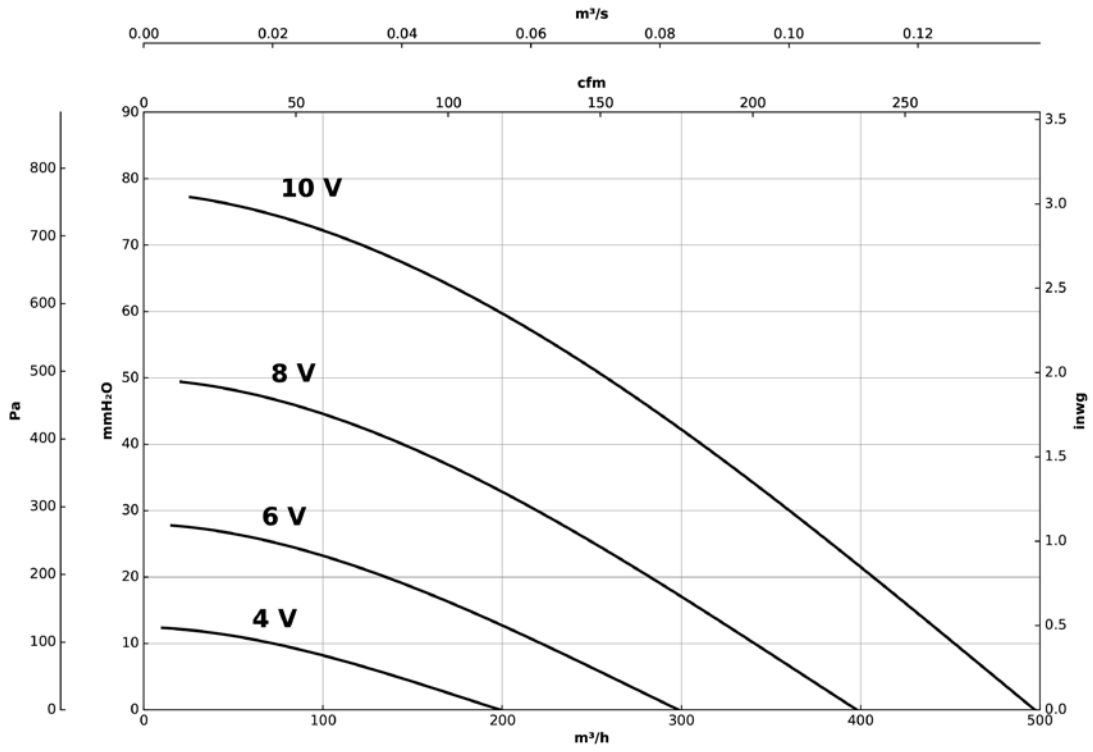


### Characteristic curves

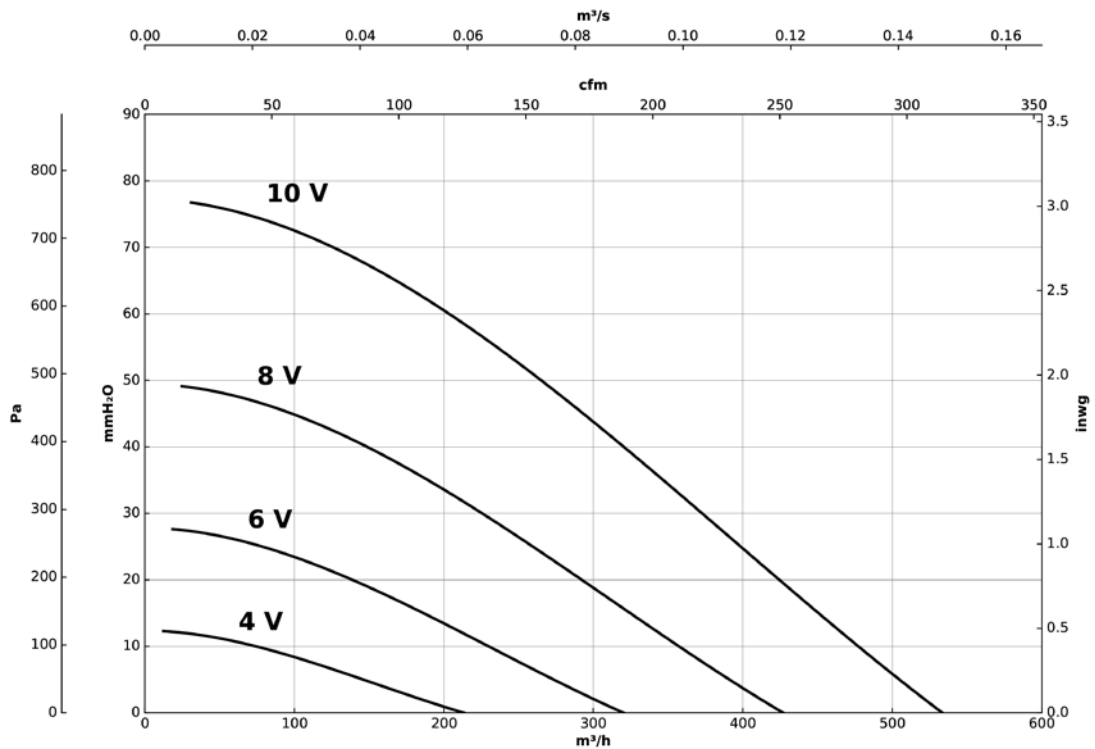
Q= Flow rate in m<sup>3</sup>/h, m<sup>3</sup>/s and cfm

Pe= Static pressure in mm H<sub>2</sub>O, Pa and inwg

**SVE/PLUS/EW-150/H**



**SVE/PLUS/EW-160/H**

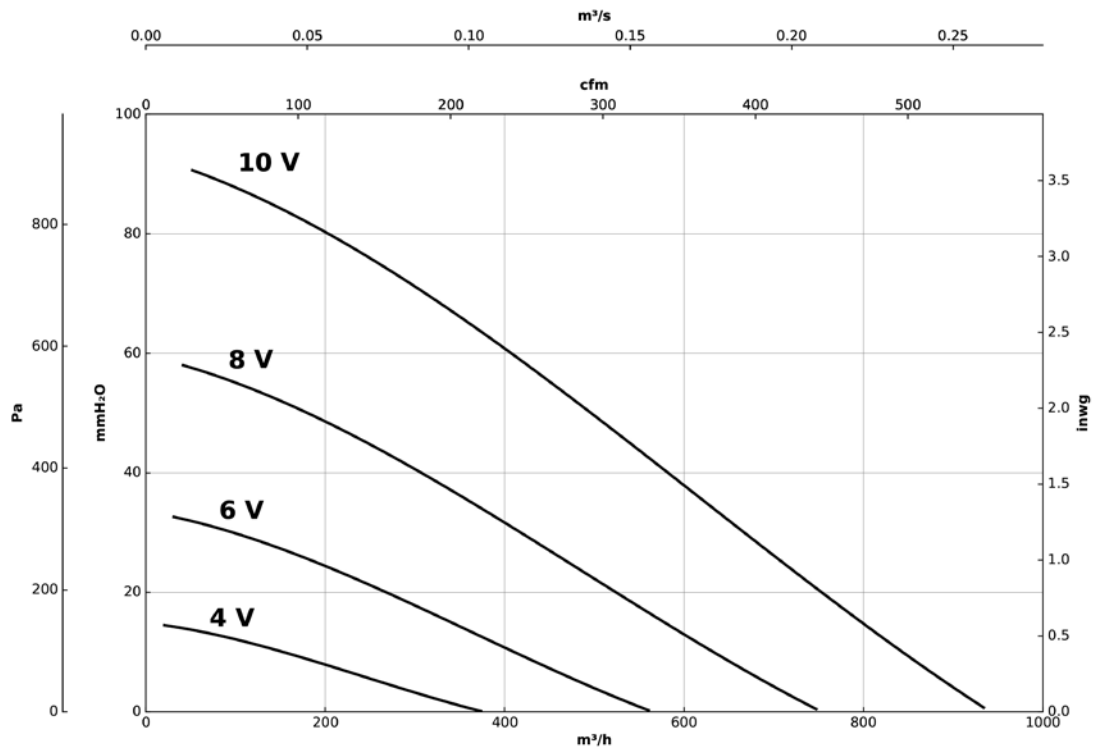


### Characteristic curves

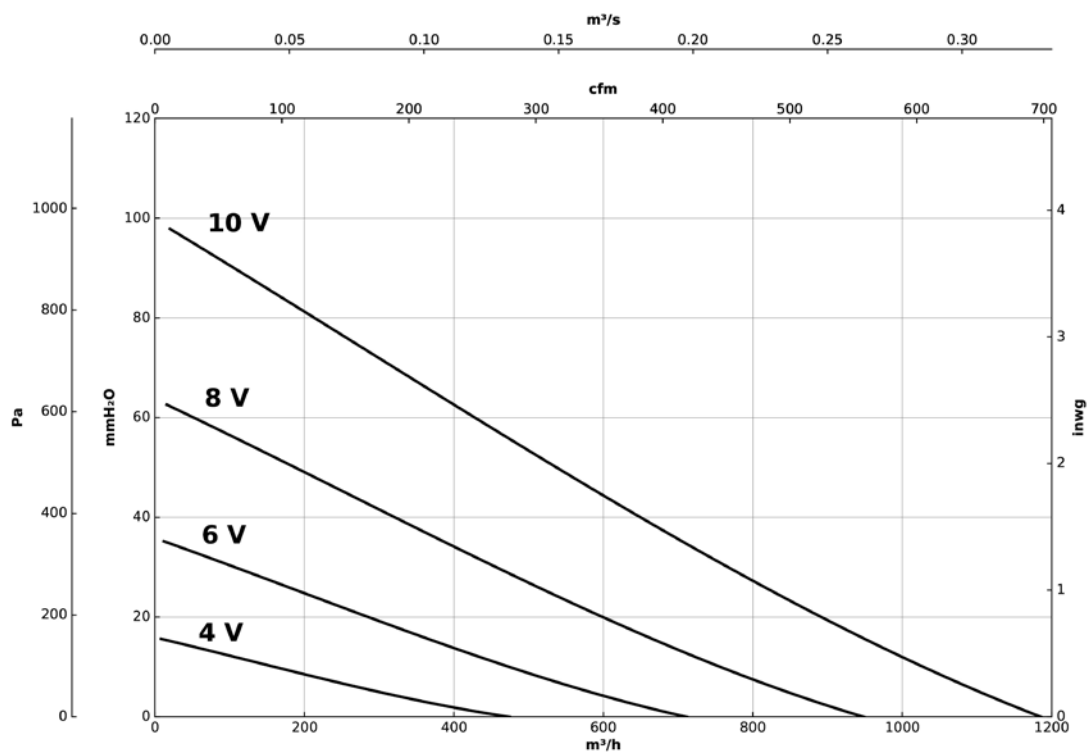
Q= Flow rate in m<sup>3</sup>/h, m<sup>3</sup>/s and cfm

Pe= Static pressure in mm H<sub>2</sub>O, Pa and inwg

#### SVE/PLUS/EW-200/H



#### SVE/PLUS/EW-250/H

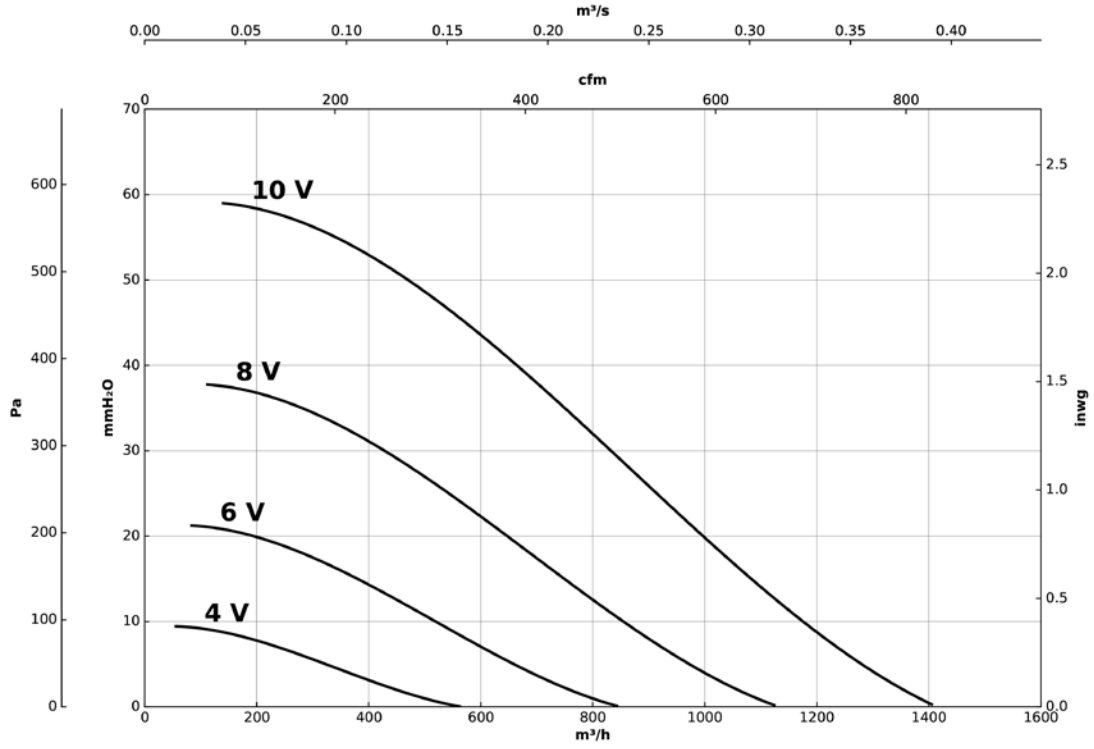


## Characteristic curves

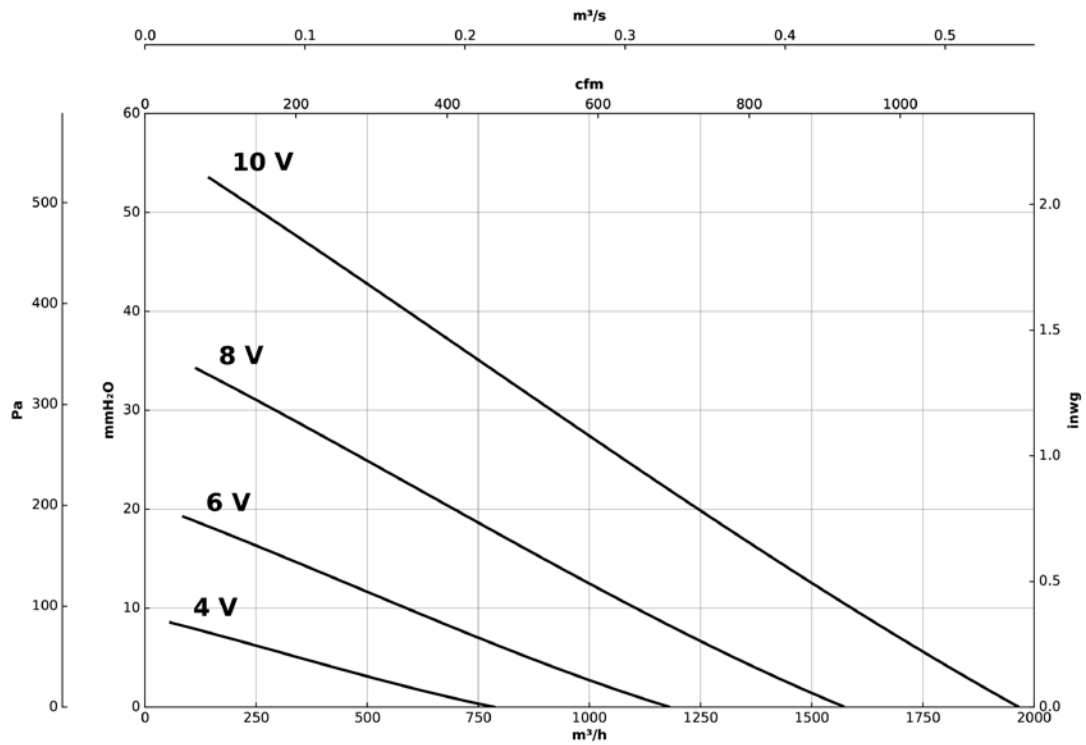
Q= Flow rate in m<sup>3</sup>/h, m<sup>3</sup>/s and cfm

Pe= Static pressure in mm H<sub>2</sub>O, Pa and inwg

### SVE/PLUS/EW-315/H



### SVE/PLUS/EW-350/H

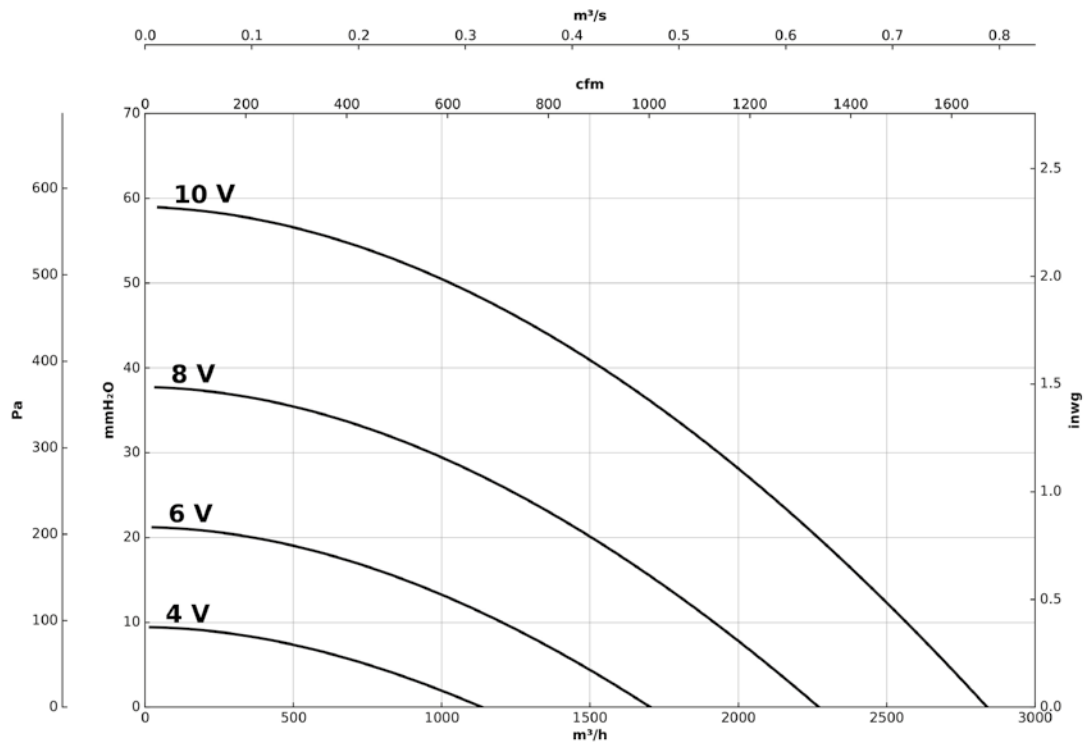


## Characteristic curves

Q= Flow rate in m<sup>3</sup>/h, m<sup>3</sup>/s and cfm

Pe= Static pressure in mm H<sub>2</sub>O, Pa and inwg

### SVE/PLUS/EW-400/H



## Accessories

