

PF



Plug Fan type high efficiency centrifugal fans for air treatment applications, with AC motor



Fan:

- Galvanised sheet steel structure.
- Backward curved impeller made of sheet steel.
- Complete with a pressure measurement connection point for optional automatic flow and pressure control.
- Vertical execution not available for sizes 1871 and 2180.
- A frequency variator is necessary for work points that require rpm other than the motor's nominal ones.

Finish:

- Anti-corrosive in galvanized steel sheet.

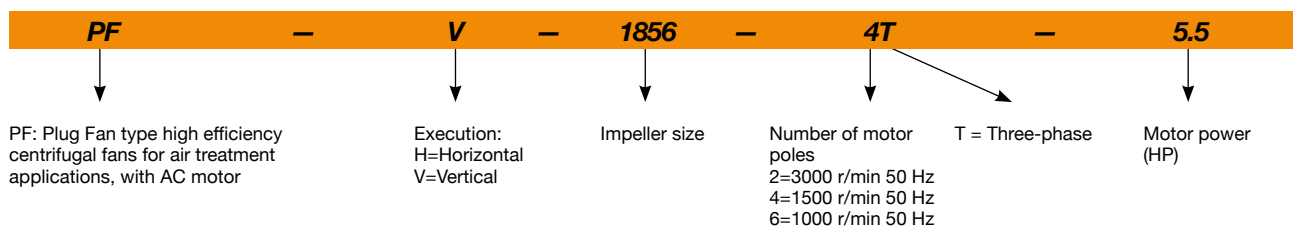
On request:

- With two speed motors.
- Stainless steel construction.

Motor:

- IE3 efficiency AC motors.
- Class F motors with ball bearings and IP55 protection.
- Three-phase 230/400 V (up to 4 kW) and 400/690 V (powers greater than 4 kW).
- Maximum temperature of air to be carried: -25 °C +60 °C.

Order code



Erp. (Energy Related Products)

Information on Directive 2009/125/EC can be downloaded from the SODECA website or the QuickFan selector programme.

Accessories



SI-PRESIÓN



INT



VSD3/A-RFT
- VSD1/A-RFM



AET



RPA



B



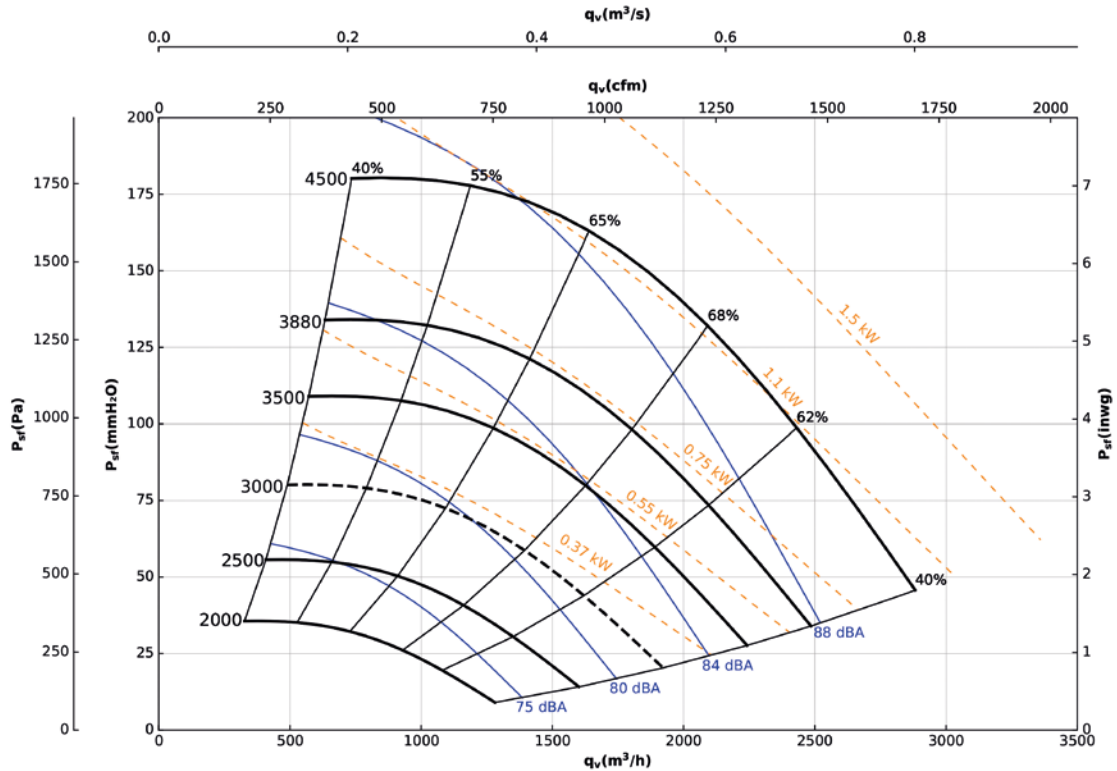
BD

925

Characteristic curves

Q= Flow rate in m³/h, m³/s and cfm

Pe= Static pressure in mm H₂O, Pa and inwg



Technical characteristics

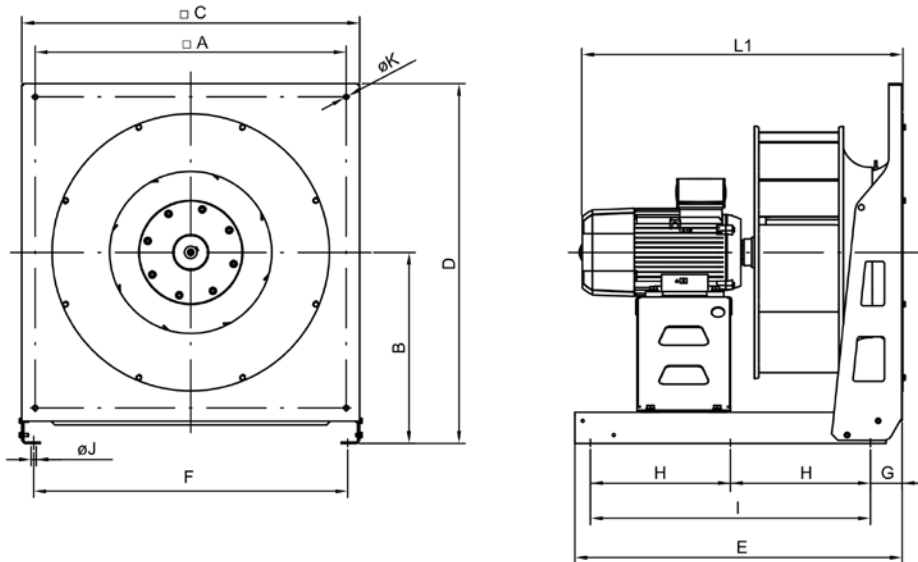
Model	Nominal speed ¹	Maximum admissible current (A)		Installed power (kW)	Max. speed	Maximum frequency (Hz)	Approx. weight (Kg)	According ErP*
	(r/min)	230V	400V		(r/min)			
PF-925-2T-0.5	2830	1.56	0.90	0.37	3000	53	22	2020
PF-925-2T-0.75	2760	2.57	1.49	0.55	3500	63	24	2020
PF-925-2T-1 IE3	2825	2.80	1.62	0.75	3880	69	26	2020
PF-925-2T-1.5 IE3	2830	4.03	2.34	1.1	4420	78	28	2020
PF-925-2T-2 IE3	2875	5.34	3.07	1.5	4500	78	31	2020

* In accordance with the ErP 2020 draft
¹ The indicated values are determined to 50 Hz motors.

925

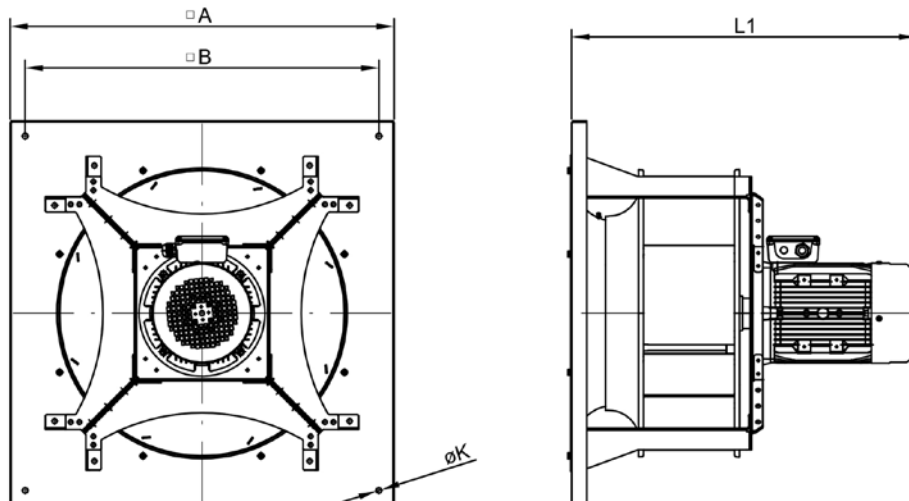
Dimensions mm

Horizontal



	□A	B	□C	D	E	F	G	H	I	ØJ	ØK	L1
PF-925-2T-0.5	350	215	400	415	405	345	70	-	300	9	9	400
PF-925-2T-0.75	350	215	400	415	405	345	70	-	300	9	9	400
PF-925-2T-1	350	215	400	415	405	345	70	-	300	9	9	433
PF-925-2T-1.5	350	215	400	415	405	345	70	-	300	9	9	433
PF-925-2T-2	350	215	400	415	405	345	70	-	300	9	9	441

Vertical



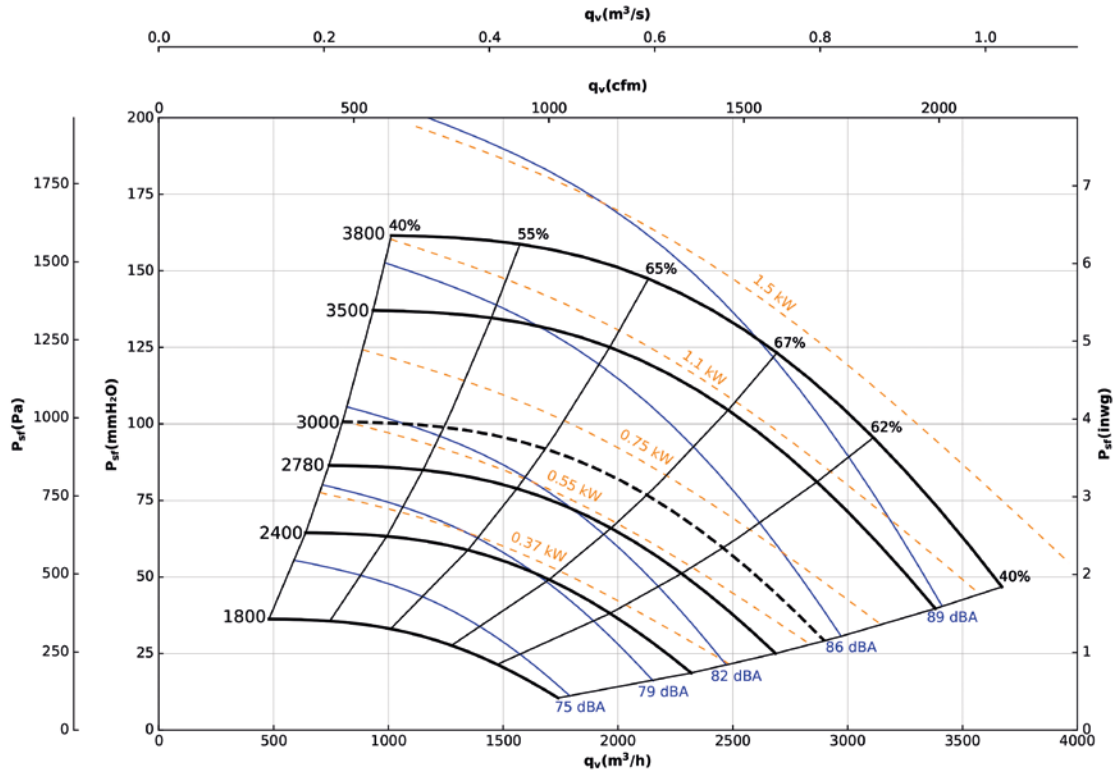
	□A	□B	ØK	L1
PF-925-2T-0.5	367	400	11	400
PF-925-2T-0.75	367	400	11	400
PF-925-2T-1	367	400	11	433
PF-925-2T-1.5	367	400	11	433
PF-925-2T-2	367	400	11	441

1028

Characteristic curves

Q= Flow rate in m³/h, m³/s and cfm

Pe= Static pressure in mm H₂O, Pa and inwg



Technical characteristics

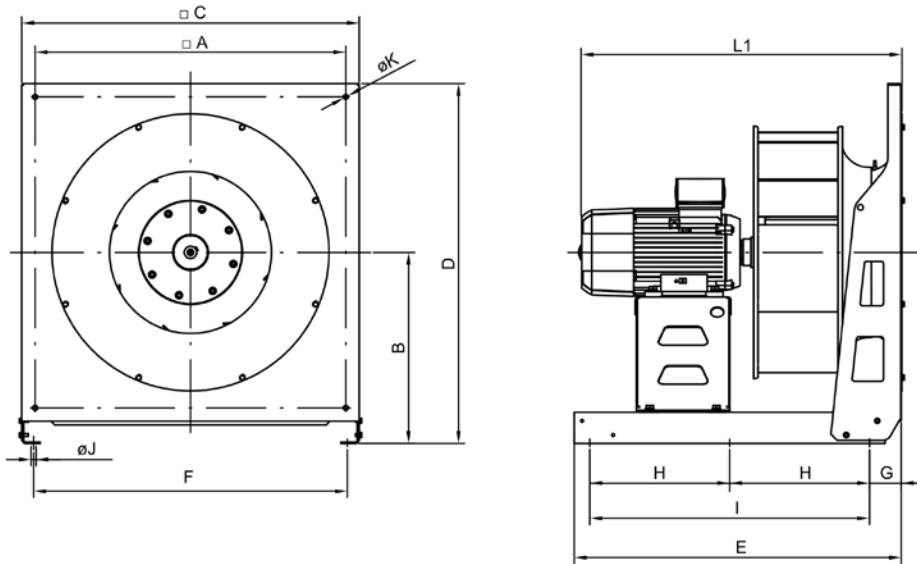
Model	Nominal speed ¹	Maximum admissible current (A)		Installed power (kW)	Max. speed (r/min)	Maximum frequency (Hz)	Approx. weight (Kg)	According ErP*
	(r/min)	230V	400V					
PF-1028-2T-0.75	2760	2.57	1.49	0.55	2780	50	25	2020
PF-1028-2T-1 IE3	2825	2.80	1.62	0.75	3080	55	28	2020
PF-1028-2T-1.5 IE3	2830	4.03	2.34	1.1	3500	62	29	2020
PF-1028-2T-2 IE3	2875	5.34	3.07	1.5	3800	66	33	2020
PF-1028-4T-0.5	1370	2.02	1.17	0.37	2400	88	25	2020

* In accordance with the ErP 2020 draft
¹ The indicated values are determined to 50 Hz motors.

1028

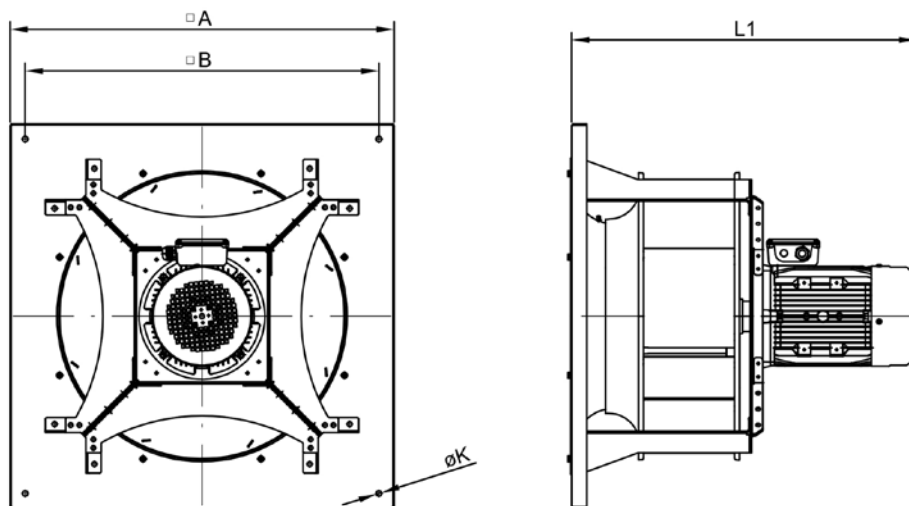
Dimensions mm

Horizontal



	□A	B	□C	D	E	F	G	H	I	ØJ	ØK	L1
PF-1028-2T-0.75	375	215	400	415	405	345	70	-	300	9	9	417
PF-1028-2T-1	375	215	400	415	405	345	70	-	300	9	9	450
PF-1028-2T-1.5	375	215	400	415	405	345	70	-	300	9	9	450
PF-1028-2T-2	375	215	400	415	405	345	70	-	300	9	9	458
PF-1028-4T-0.5	375	215	400	415	405	345	70	-	300	9	9	417

Vertical



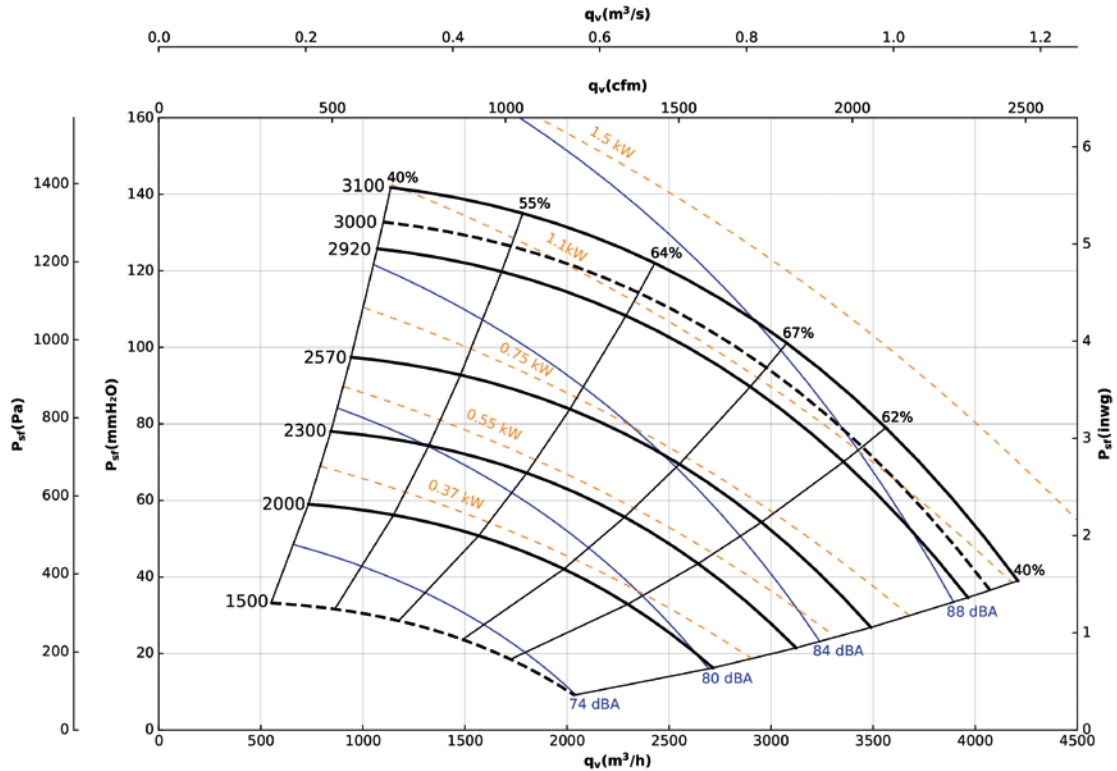
	□A	□B	ØK	L1
PF-1028-2T-0.75	390	420	11	417
PF-1028-2T-1	390	420	11	450
PF-1028-2T-1.5	390	420	11	450
PF-1028-2T-2	390	420	11	458
PF-1028-4T-0.5	390	420	11	417

1031

Characteristic curves

Q= Flow rate in m³/h, m³/s and cfm

Pe= Static pressure in mm H₂O, Pa and inwg



Technical characteristics

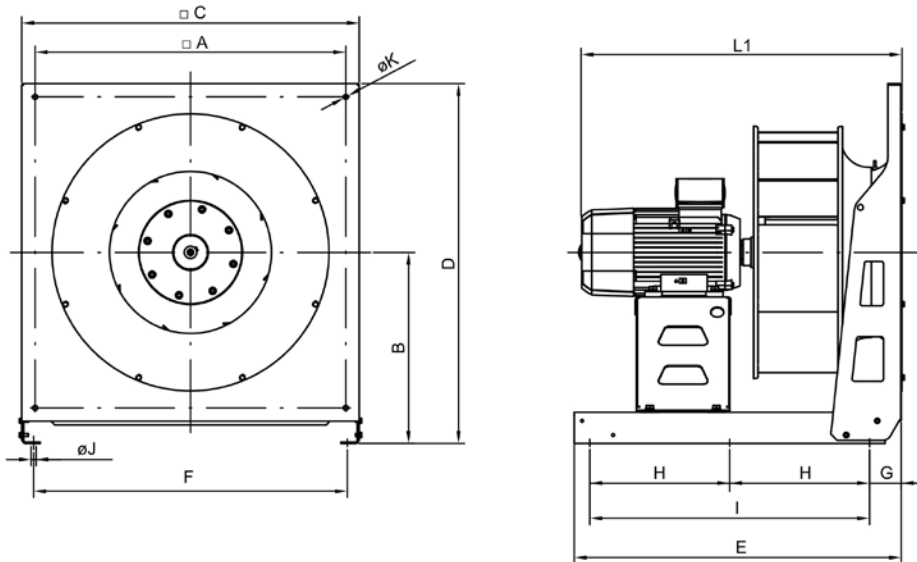
Model	Nominal speed ¹	Maximum admissible current (A)		Installed power (kW)	Max. speed (r/min)	Maximum frequency (Hz)	Approx. weight (Kg)	According ErP*
	(r/min)	230V	400V					
PF-1031-2T-1.5 IE3	2830	4.03	2.34	1.1	2920	52	30	2020
PF-1031-2T-2 IE3	2875	5.34	3.07	1.5	3100	54	34	2020
PF-1031-4T-0.5	1370	2.02	1.17	0.37	2000	73	27	2020
PF-1031-4T-0.75	1380	2.92	1.69	0.55	2300	83	30	2020
PF-1031-4T-1 IE3	1420	2.82	2.62	0.75	2570	90	30	2020

* In accordance with the ErP 2020 draft
¹ The indicated values are determined to 50 Hz motors.

1031

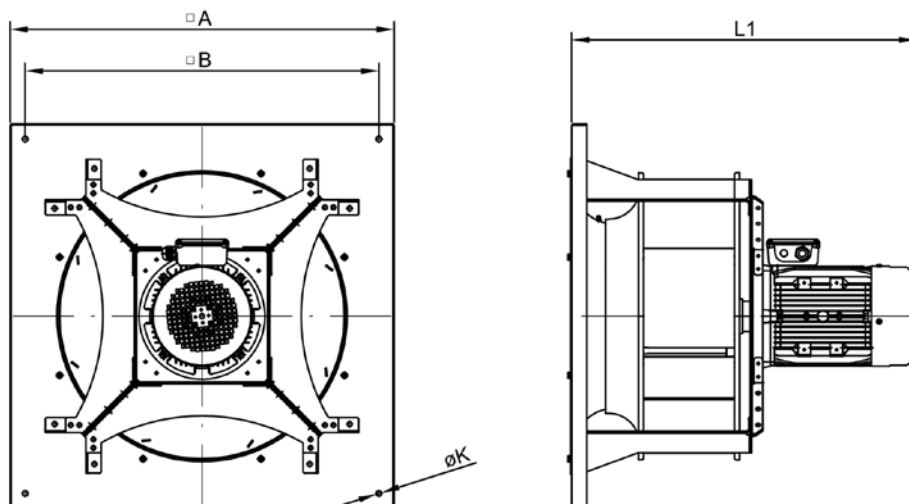
Dimensions mm

Horizontal



	□A	B	□C	D	E	F	G	H	I	ØJ	ØK	L1
PF-1031-2T-1.5	375	215	400	415	505	345	70	-	400	9	9	460
PF-1031-2T-2	375	215	400	415	505	345	70	-	400	9	9	471
PF-1031-4T-0.5	375	215	400	415	505	345	70	-	400	9	9	428
PF-1031-4T-0.75	375	215	400	415	505	345	70	-	400	9	9	460
PF-1031-4T-1	375	215	400	415	505	345	70	-	400	9	9	460

Vertical



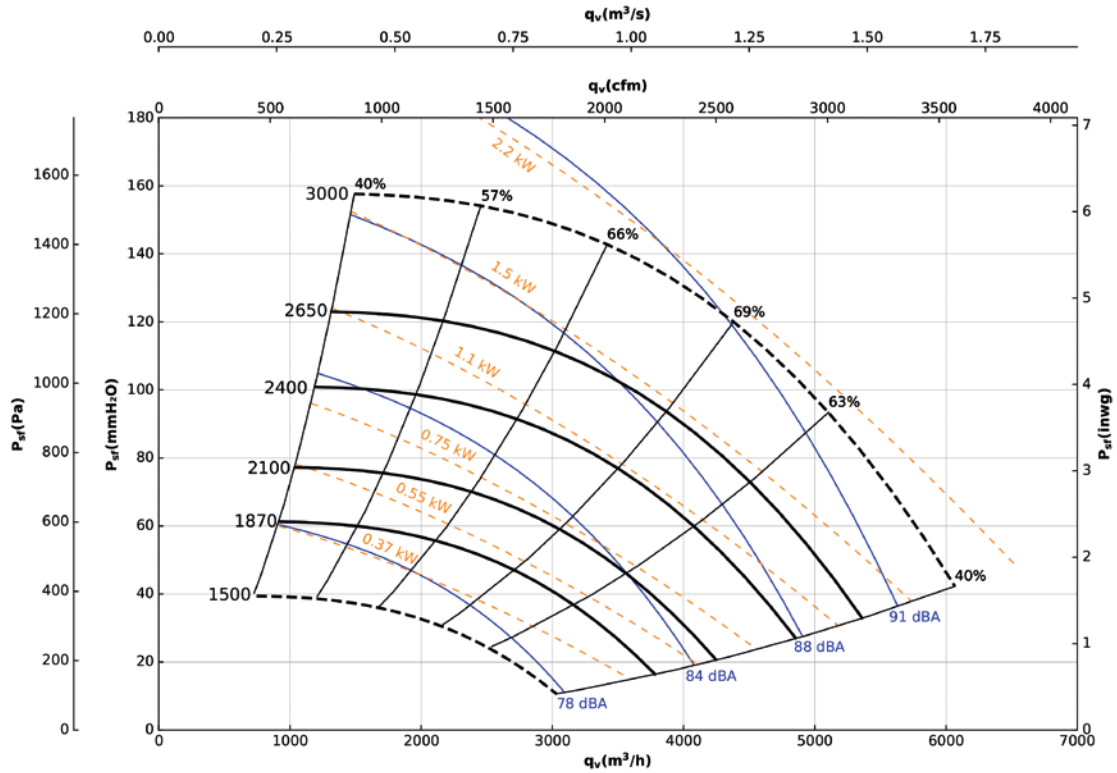
	□A	□B	ØK	L1
PF-1031-2T-1.5	434	470	11	460
PF-1031-2T-2	434	470	11	471
PF-1031-4T-0.5	434	470	11	428
PF-1031-4T-0.75	434	470	11	460
PF-1031-4T-1	434	470	11	460

1135

Characteristic curves

Q= Flow rate in m³/h, m³/s and cfm

Pe= Static pressure in mm H₂O, Pa and inwg



Technical characteristics

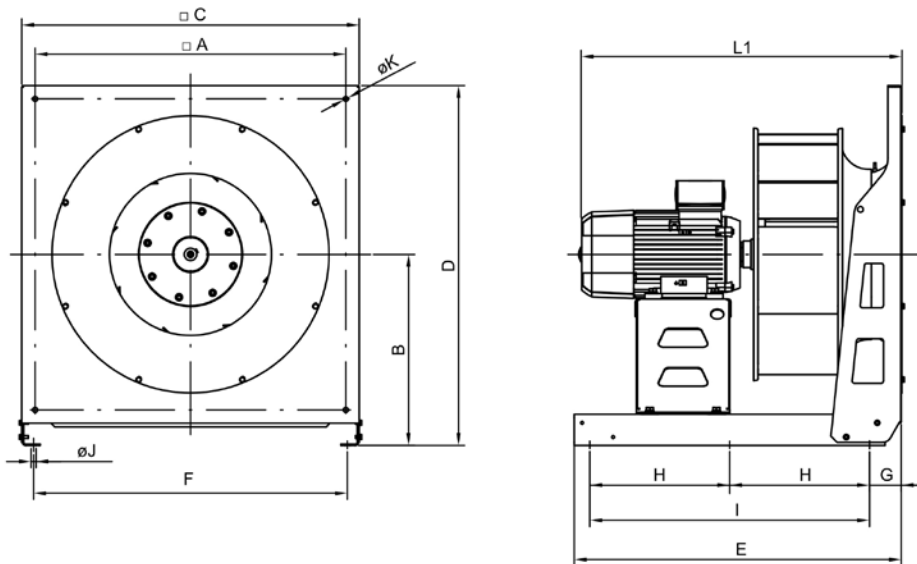
Model	Nominal speed ¹	Maximum admissible current (A)		Installed power (kW)	Max. speed	Maximum frequency (Hz)	Approx. weight (Kg)	According ErP*
	(r/min)	230V	400V		(r/min)			
PF-1135-2T-3 IE3	2910	7.32	4.21	2.2	3000	52	44	2020
PF-1135-4T-0.75	1380	2.92	1.69	0.55	1870	68	36	2020
PF-1135-4T-1 IE3	1420	2.82	1.62	0.75	2100	74	41	2020
PF-1135-4T-1.5 IE3	1455	4.07	2.34	1.1	2400	82	46	2020
PF-1135-4T-2 IE3	1440	5.41	3.11	1.5	2650	92	45	2020

* In accordance with the ErP 2020 draft
¹ The indicated values are determined to 50 Hz motors.

1135

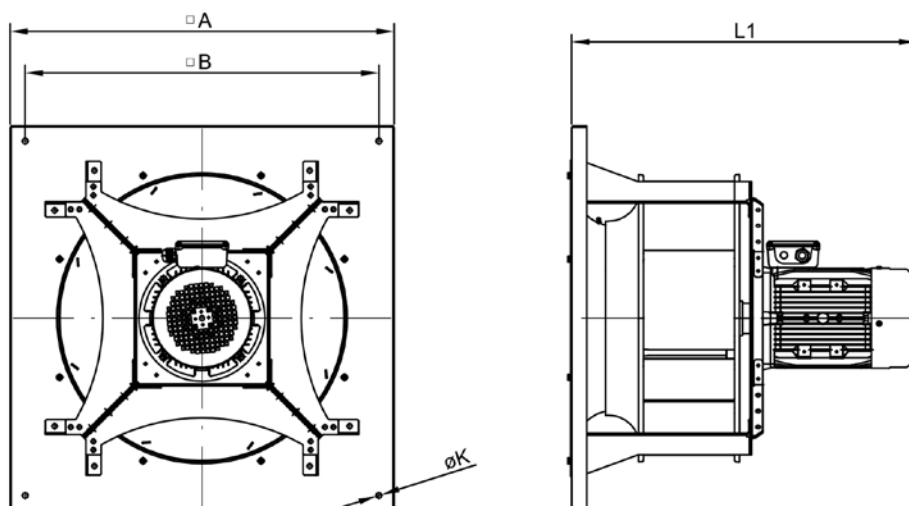
Dimensions mm

Horizontal



	□A	B	□C	D	E	F	G	H	I	ØJ	ØK	L1
PF-1135-2T-3	475	270	500	520	505	445	70	-	400	9	9	495
PF-1135-4T-0.75	475	270	500	520	505	445	70	-	400	9	9	487
PF-1135-4T-1	475	270	500	520	505	445	70	-	400	9	9	487
PF-1135-4T-1.5	475	270	500	520	505	445	70	-	400	9	9	495
PF-1135-4T-2	475	270	500	520	505	445	70	-	400	9	9	495

Vertical



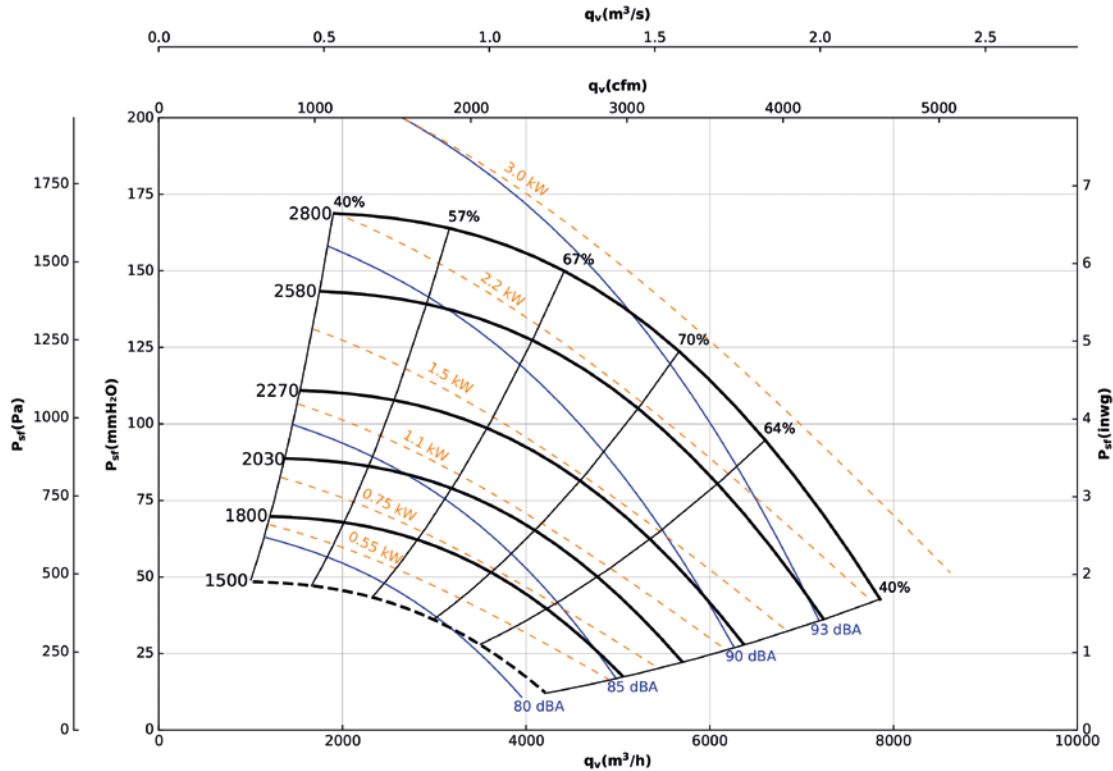
	□A	□B	ØK	L1
PF-1135-2T-3	470	500	11	495
PF-1135-4T-0.75	470	500	11	487
PF-1135-4T-1	470	500	11	487
PF-1135-4T-1.5	470	500	11	495
PF-1135-4T-2	470	500	11	495

1240

Characteristic curves

Q= Flow rate in m³/h, m³/s and cfm

Pe= Static pressure in mm H₂O, Pa and inwg



Technical characteristics

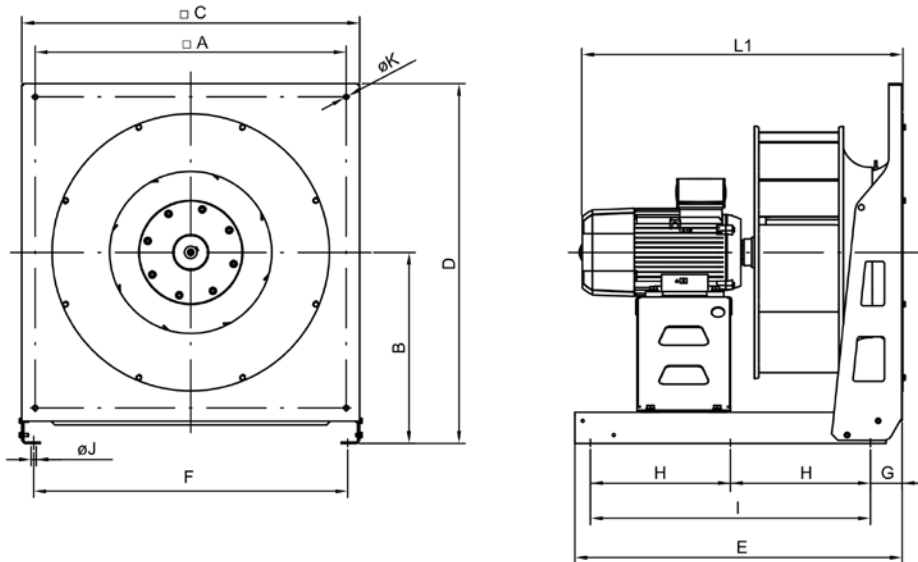
Model	Nominal speed ¹ (r/min)	Maximum admissible current (A)		Installed power (kW)	Max. speed (r/min)	Maximum frequency (Hz)	Approx. weight (Kg)	According ErP*
		230V	400V					
PF-1240-4T-1 IE3	1420	2.82	1.62	0.75	1800	63	43	2020
PF-1240-4T-1.5 IE3	1455	4.07	2.34	1.1	2030	70	47	2020
PF-1240-4T-2 IE3	1440	5.41	3.11	1.5	2270	79	46	2020
PF-1240-4T-3 IE3	1435	7.93	4.56	2.2	2580	90	58	2020
PF-1240-4T-4 IE3	1440	10.7	6.15	3	2800	97	58	2020

* In accordance with the ErP 2020 draft
¹ The indicated values are determined to 50 Hz motors.

1240

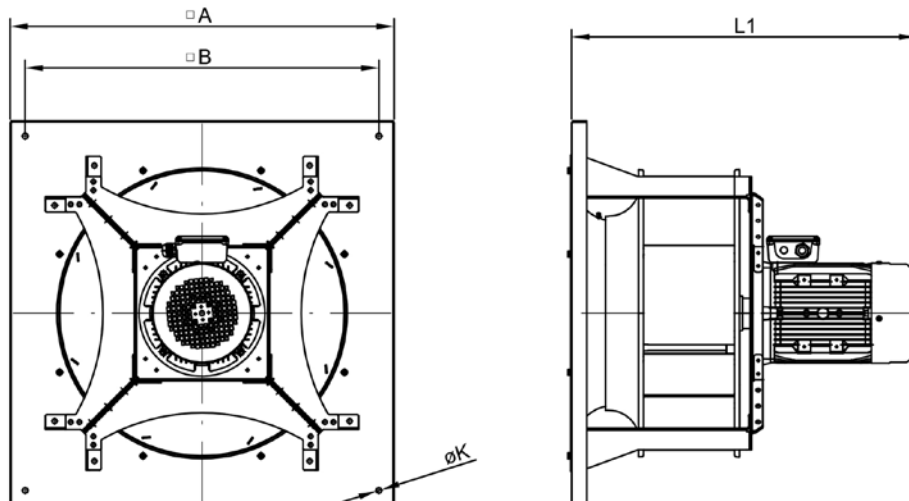
Dimensions mm

Horizontal



	□A	B	□C	D	E	F	G	H	I	ØJ	ØK	L1
PF-1240-4T-1	475	270	500	520	505	445	70	-	400	9	9	510
PF-1240-4T-1.5	475	270	500	520	505	445	70	-	400	9	9	517
PF-1240-4T-2	475	270	500	520	505	445	70	-	400	9	9	517
PF-1240-4T-3	475	270	500	520	505	445	70	-	400	9	9	582
PF-1240-4T-4	475	270	500	520	505	445	70	-	400	9	9	582

Vertical



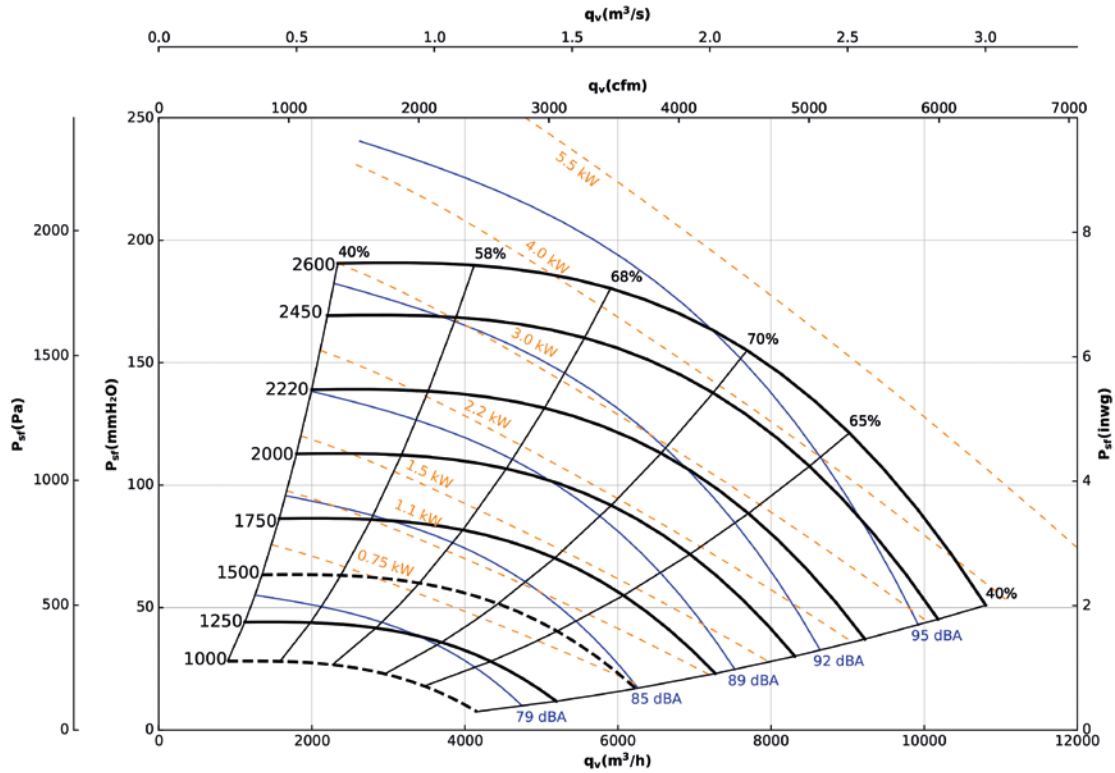
	□A	□B	ØK	L1
PF-1240-4T-1	519	550	11	510
PF-1240-4T-1.5	519	550	11	517
PF-1240-4T-2	519	550	11	517
PF-1240-4T-3	519	550	11	582
PF-1240-4T-4	519	550	11	582

1445

Characteristic curves

Q= Flow rate in m³/h, m³/s and cfm

Pe= Static pressure in mm H₂O, Pa and inwg



Technical characteristics

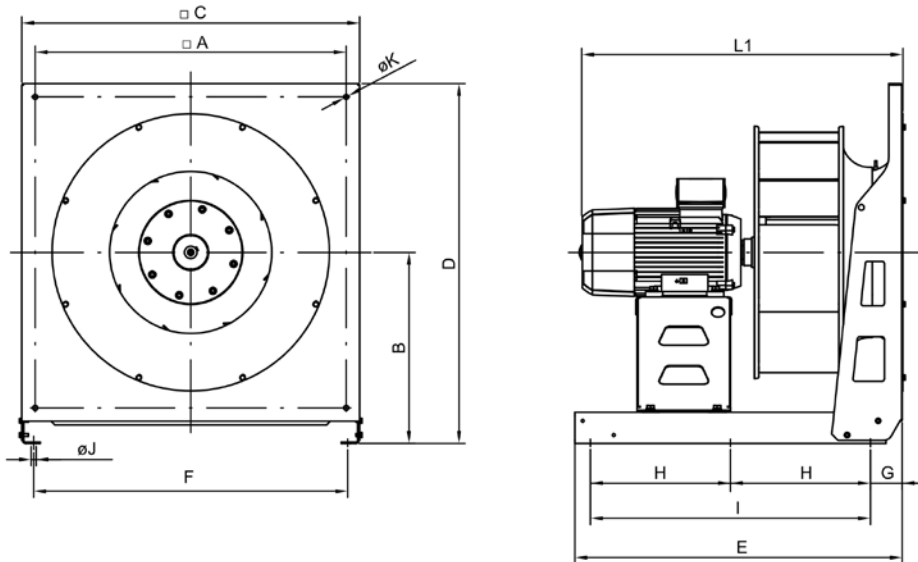
Model	Nominal speed ¹	Maximum admissible current (A)			Installed power	Max. speed	Maximum frequency	Approx. weight	According ErP*
		230V	400V	690V					
PF-1445-4T-2 IE3	1440	5.41	3.11	-	1.5	1750	61	61	2020
PF-1445-4T-3 IE3	1435	7.93	4.56	-	2.2	2000	70	73	2020
PF-1445-4T-4 IE3	1440	10.70	6.15	-	3	2220	77	73	2020
PF-1445-4T-5.5 IE3	1450	13.90	8.00	-	4	2450	84	82	2020
PF-1445-4T-7.5 IE3	1465	-	10.30	5.97	5.5	2600	89	106	2020

* In accordance with the ErP 2020 draft
¹ The indicated values are determined to 50 Hz motors.

1445

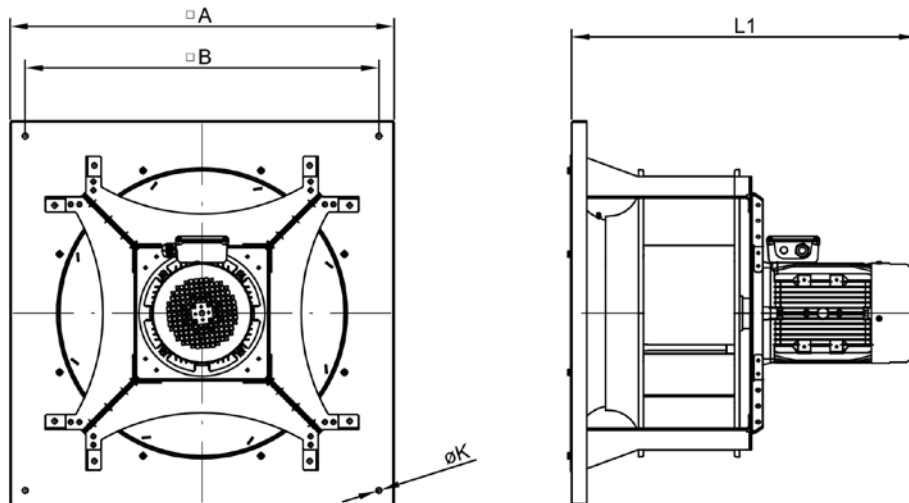
Dimensions mm

Horizontal



	□A	B	□C	D	E	F	G	H	I	ØJ	ØK	L1
PF-1445-4T-2	580	335	630	650	605	575	70	-	500	9	9	587
PF-1445-4T-3	580	335	630	650	605	575	70	-	500	9	9	610
PF-1445-4T-4	580	335	630	650	605	575	70	-	500	9	9	610
PF-1445-4T-5.5	580	335	630	650	605	575	70	-	500	9	9	625
PF-1445-4T-7.5	580	335	630	650	705	575	70	-	600	9	9	645

Vertical



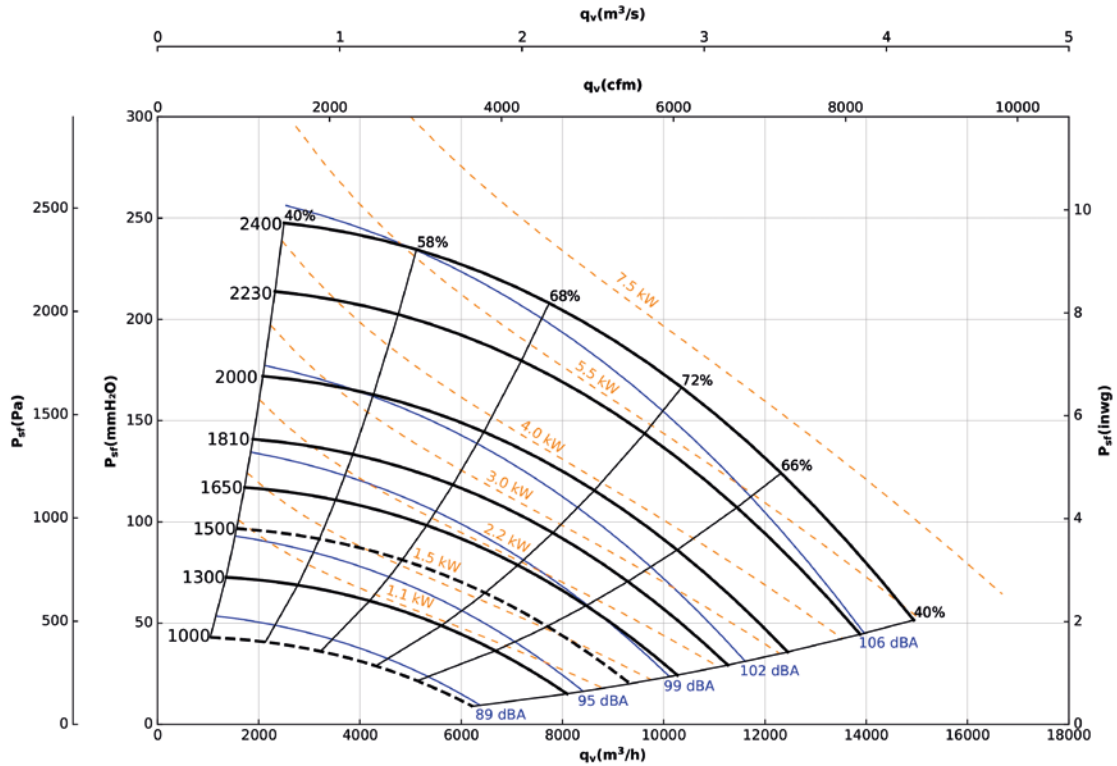
	□A	□B	ØK	L1
PF-1445-4T-2	580	630	11	587
PF-1445-4T-3	580	630	11	610
PF-1445-4T-4	580	630	11	610
PF-1445-4T-5.5	580	630	11	625
PF-1445-4T-7.5	580	630	11	645

1650

Characteristic curves

Q= Flow rate in m³/h, m³/s and cfm

Pe= Static pressure in mm H₂O, Pa and inwg



Technical characteristics

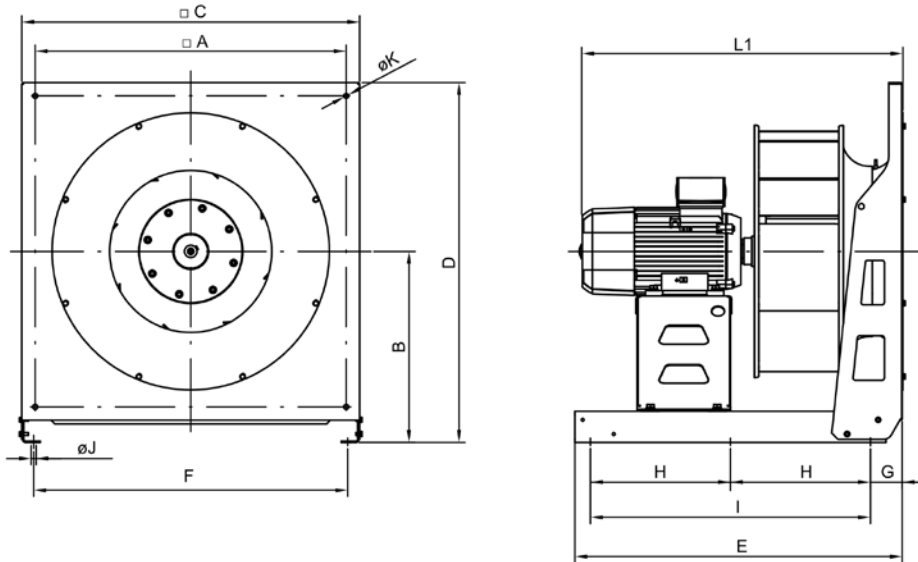
Model	Nominal speed ¹	Maximum admissible current (A)			Installed power (kW)	Max. speed (r/min)	Maximum frequency (Hz)	Approx. weight (Kg)	According ErP*
	(r/min)	230V	400V	690V					
PF-1650-4T-2 IE3	1440	5.41	3.11	-	1.5	1440	50	65	2020
PF-1650-4T-3 IE3	1435	7.93	4.56	-	2.2	1650	57	77	2020
PF-1650-4T-4 IE3	1440	10.70	6.15	-	3	1810	63	77	2020
PF-1650-4T-5.5 IE3	1450	13.90	8.00	-	4	2000	69	86	2020
PF-1650-4T-7.5 IE3	1465	-	10.30	5.97	5.5	2230	76	109	2020
PF-1650-4T-10 IE3	1465	-	13.90	8.06	7.5	2400	82	110	2020

* In accordance with the ErP 2020 draft
¹ The indicated values are determined to 50 Hz motors.

1650

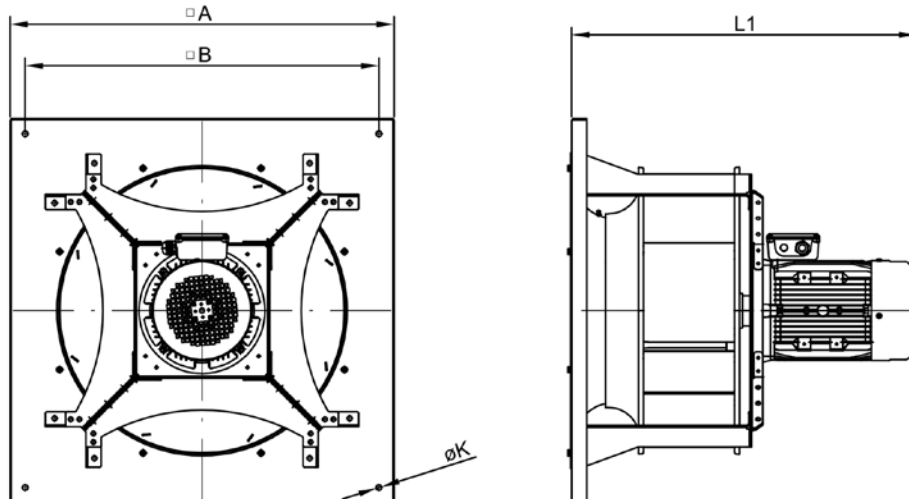
Dimensions mm

Horizontal



	□A	B	□C	D	E	F	G	H	I	ØJ	ØK	L1
PF-1650-4T-2	600	335	630	650	705	575	70	-	600	9	9	585
PF-1650-4T-3	600	335	630	650	705	575	70	-	600	9	9	647
PF-1650-4T-4	600	335	630	650	705	575	70	-	600	9	9	647
PF-1650-4T-5.5	600	335	630	650	705	575	70	-	600	9	9	662
PF-1650-4T-7.5	600	335	630	650	705	575	70	-	600	9	9	680
PF-1650-4T-10	600	335	630	650	705	575	70	-	600	9	9	680

Vertical

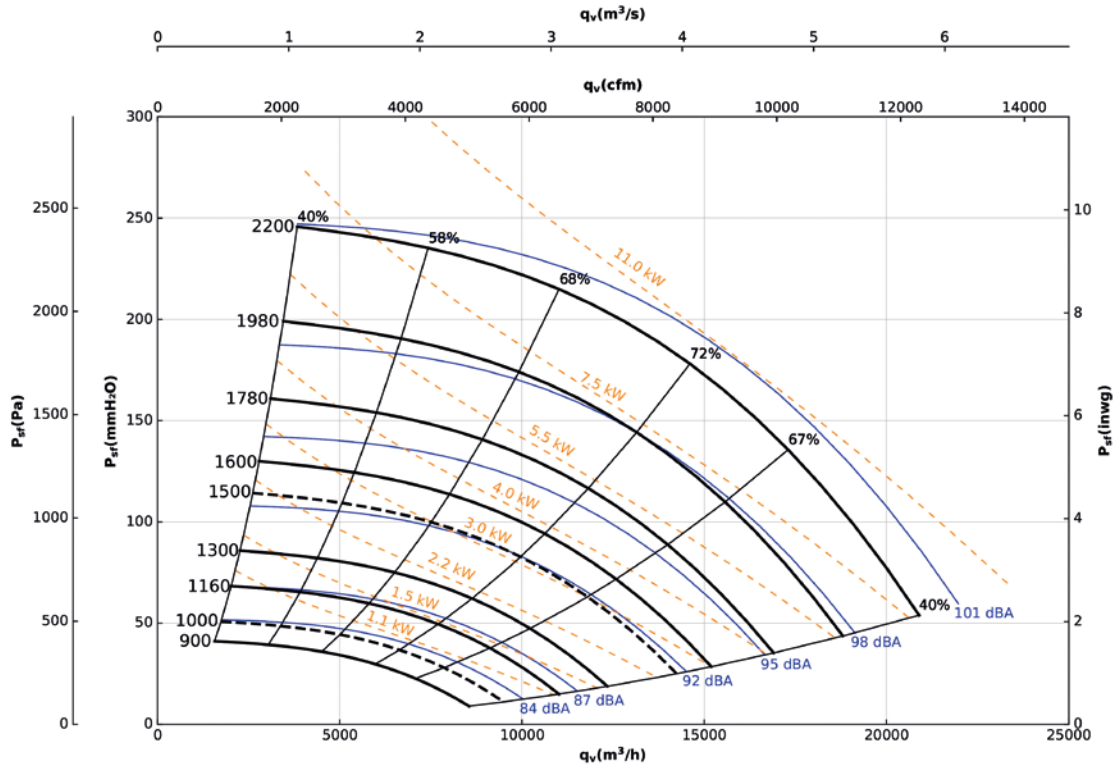


	□A	□B	ØK	L1
PF-1650-4T-2	635	670	11	585
PF-1650-4T-3	635	670	11	647
PF-1650-4T-4	635	670	11	647
PF-1650-4T-5.5	635	670	11	662
PF-1650-4T-7.5	635	670	11	680
PF-1650-4T-10	635	670	11	680

1856

Characteristic curves

Q= Flow rate in m³/h, m³/s and cfm Pe= Static pressure in mm H₂O, Pa and inwg



Technical characteristics

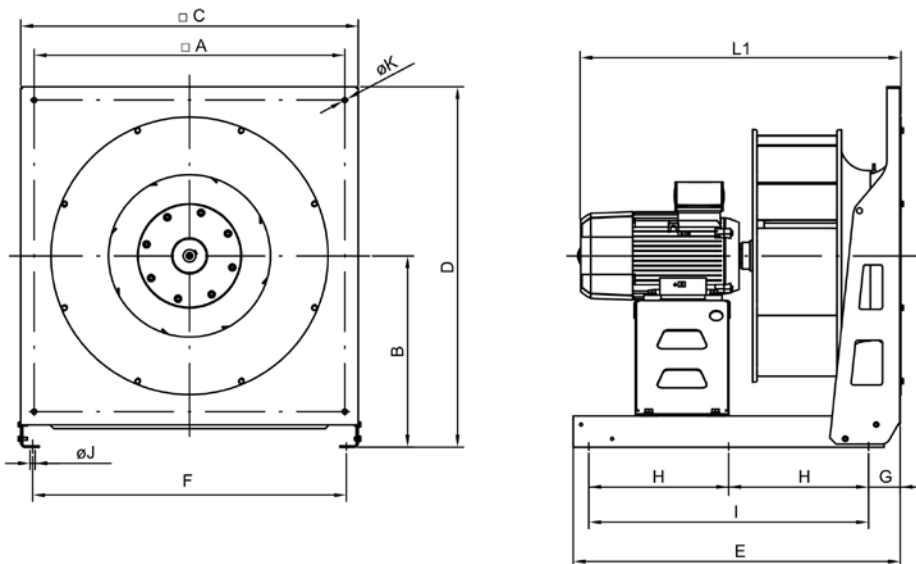
Model	Nominal speed ¹ (r/min)	Maximum admissible current (A)			Installed power (kW)	Max. speed (r/min)	Maximum frequency (Hz)	Approx. weight (Kg)	According to ErP*
		230V	400V	690V					
PF-1856-4T-3 IE3	1435	7.93	4.56	-	2.2	1300	45	99	2020
PF-1856-4T-4 IE3	1440	10.70	6.15	-	3	1450	50	99	2020
PF-1856-4T-5.5 IE3	1450	13.90	8.00	-	4	1600	55	108	2020
PF-1856-4T-7.5 IE3	1465	-	10.30	5.97	5.5	1780	61	132	2020
PF-1856-4T-10 IE3	1465	-	13.90	8.06	7.5	1980	68	133	2020
PF-1856-4T-15 IE3	1470	-	20.90	12.10	11	2200	75	201	2020
PF-1856-6T-2 IE3	950	6.43	3.70	-	1.5	1160	61	94	2020

* In accordance with the ErP 2020 draft
¹ The indicated values are determined to 50 Hz motors.

1856

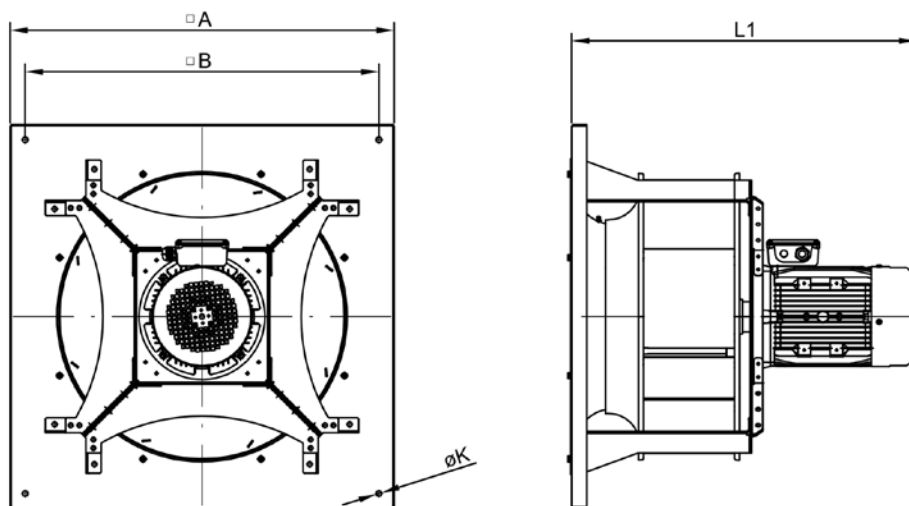
Dimensions mm

Horizontal



	□A	B	□C	D	E	F	G	H	I	ØJ	ØK	L1
PF-1856-4T-3	700	430	760	810	705	710	70	-	600	9	9	690
PF-1856-4T-4	700	430	760	810	705	710	70	-	600	9	9	690
PF-1856-4T-5.5	700	430	760	810	705	710	70	-	600	9	9	704
PF-1856-4T-7.5	700	430	760	810	805	710	70	-	700	9	9	720
PF-1856-4T-10	700	430	760	810	805	710	70	-	700	9	9	720
PF-1856-4T-15	700	430	760	810	805	710	70	-	700	9	9	892
PF-1856-6T-2	700	430	760	810	705	710	70	-	600	9	9	690

Vertical



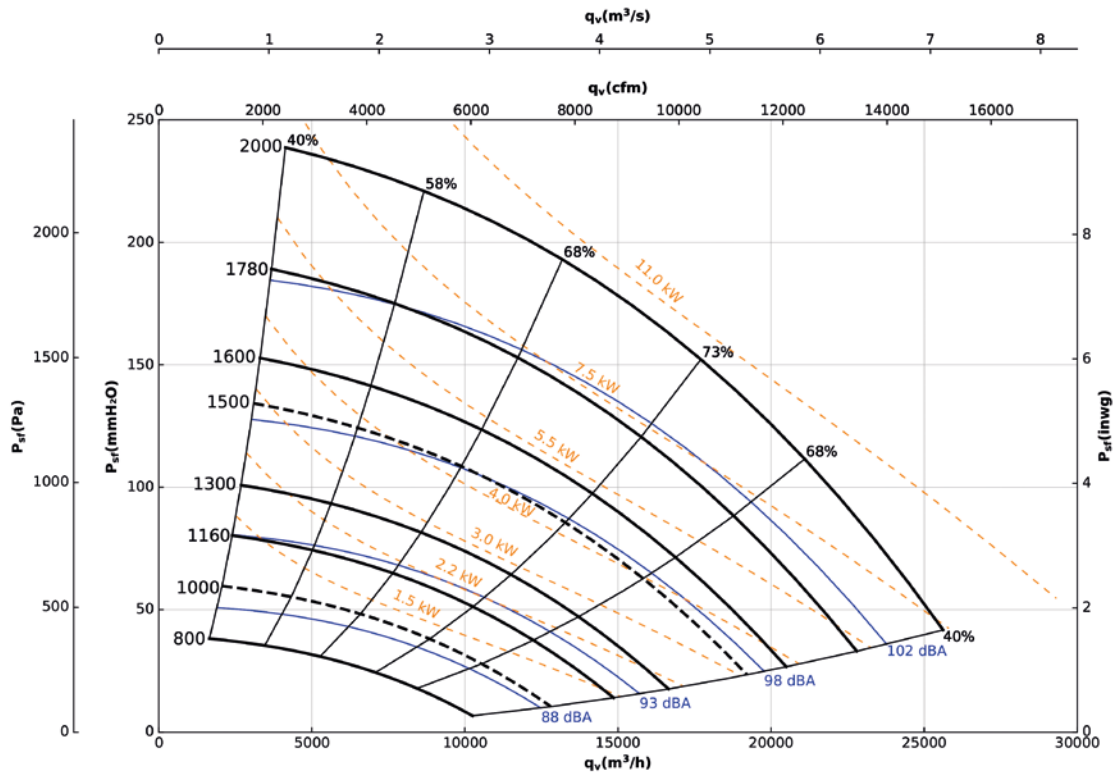
	□A	□B	ØK	L1
PF-1856-4T-3	689	730	11	690
PF-1856-4T-4	689	730	11	690
PF-1856-4T-5.5	689	730	11	704
PF-1856-4T-7.5	689	730	11	720
PF-1856-4T-10	689	730	11	720
PF-1856-4T-15	689	730	11	892
PF-1856-6T-2	689	730	11	690

1663

Characteristic curves

Q= Flow rate in m³/h, m³/s and cfm

Pe= Static pressure in mm H₂O, Pa and inwg



Technical characteristics

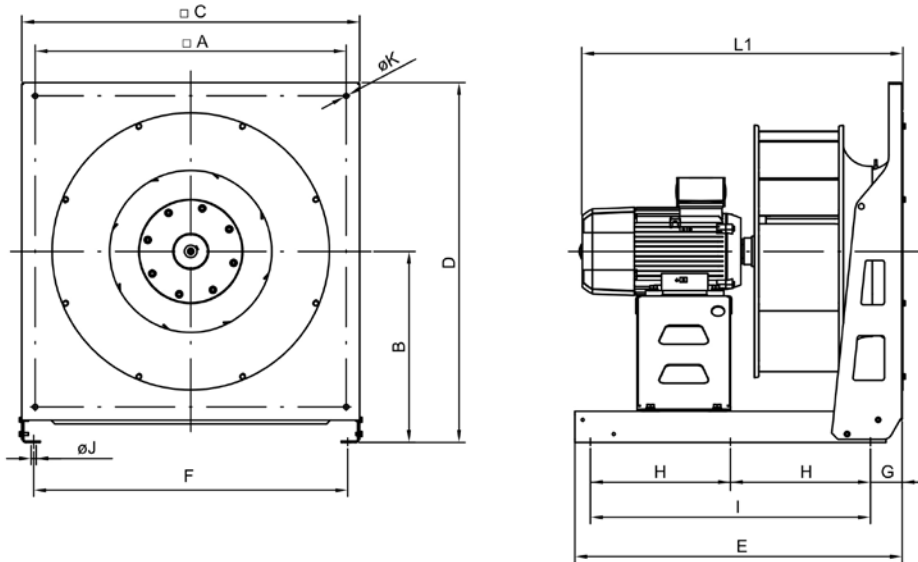
Model	Nominal speed ¹	Maximum admissible current (A)			Installed power (kW)	Max. speed (r/min)	Maximum frequency (Hz)	Approx. weight (Kg)	According ErP*
	(r/min)	230V	400V	690V					
PF-1663-4T-5.5 IE3	1450	13.90	8.00	-	4	1440	50	115	2020
PF-1663-4T-7.5 IE3	1465	-	10.30	5.97	5.5	1600	55	138	2020
PF-1663-4T-10 IE3	1465	-	13.90	8.06	7.5	1780	61	139	2020
PF-1663-4T-15 IE3	1470	-	20.90	12.10	11	2000	68	208	2020
PF-1663-6T-3 IE3	950	9.08	5.22	-	2.2	1160	61	110	2020
PF-1663-6T-4 IE3	970	12.00	6.91	-	3	1300	67	128	2020

* In accordance with the ErP 2020 draft
¹ The indicated values are determined to 50 Hz motors.

1663

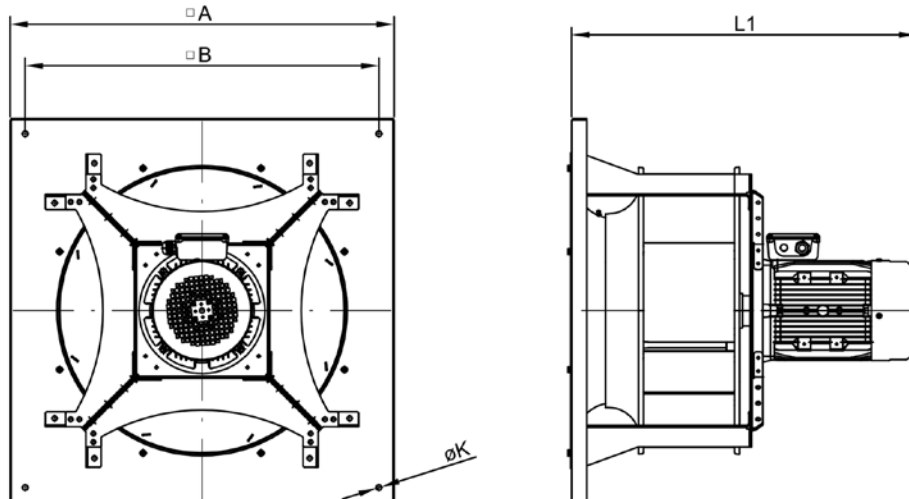
Dimensions mm

Horizontal



	□A	B	□C	D	E	F	G	H	I	ØJ	ØK	L1
PF-1663-4T-5.5	700	430	760	810	805	705	70	-	700	11	9	776
PF-1663-4T-7.5	700	430	760	810	805	705	70	-	700	11	9	792
PF-1663-4T-10	700	430	760	810	805	705	70	-	700	11	9	792
PF-1663-4T-15	700	430	760	810	905	705	70	400	800	11	9	964
PF-1663-6T-3	700	430	760	810	805	705	70	-	700	11	9	776
PF-1663-6T-4	700	430	760	810	805	705	70	-	700	11	9	792

Vertical



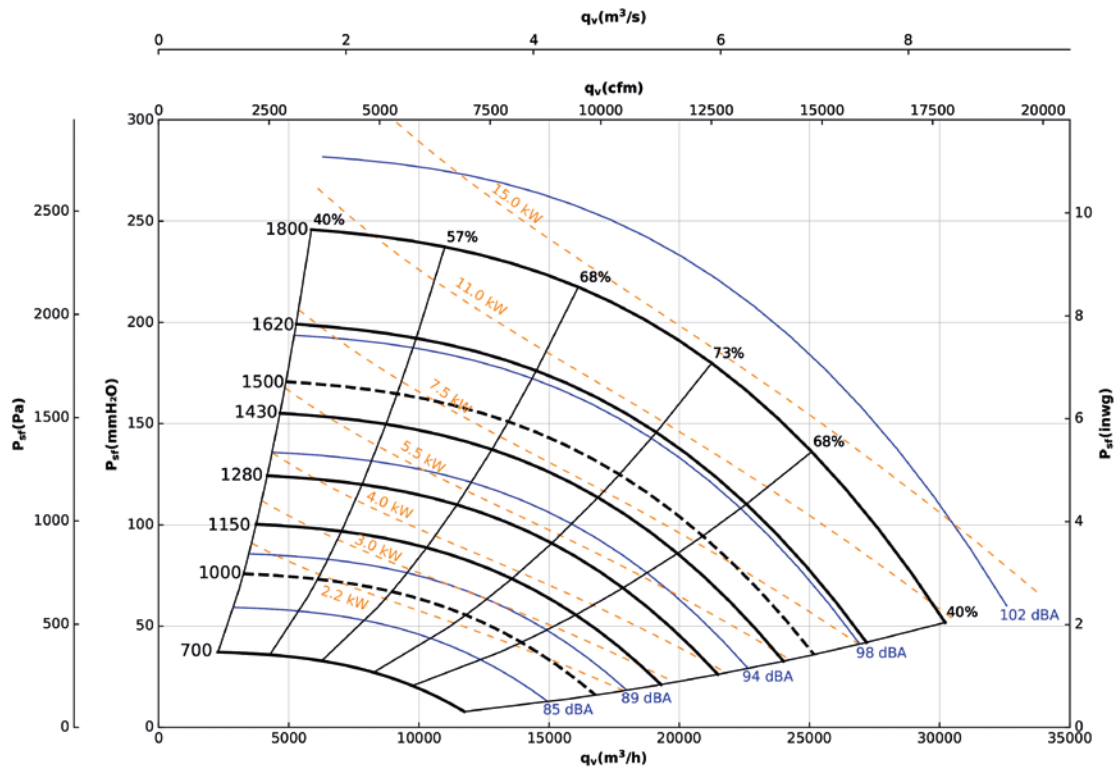
	□A	□B	ØK	L1
PF-1663-4T-5.5	800	840	11	776
PF-1663-4T-7.5	800	840	11	792
PF-1663-4T-10	800	840	11	792
PF-1663-4T-15	800	840	11	964
PF-1663-6T-3	800	840	11	776
PF-1663-6T-4	800	840	11	792

1871

Characteristic curves

Q= Flow rate in m³/h, m³/s and cfm

Pe= Static pressure in mm H₂O, Pa and inwg



Technical characteristics

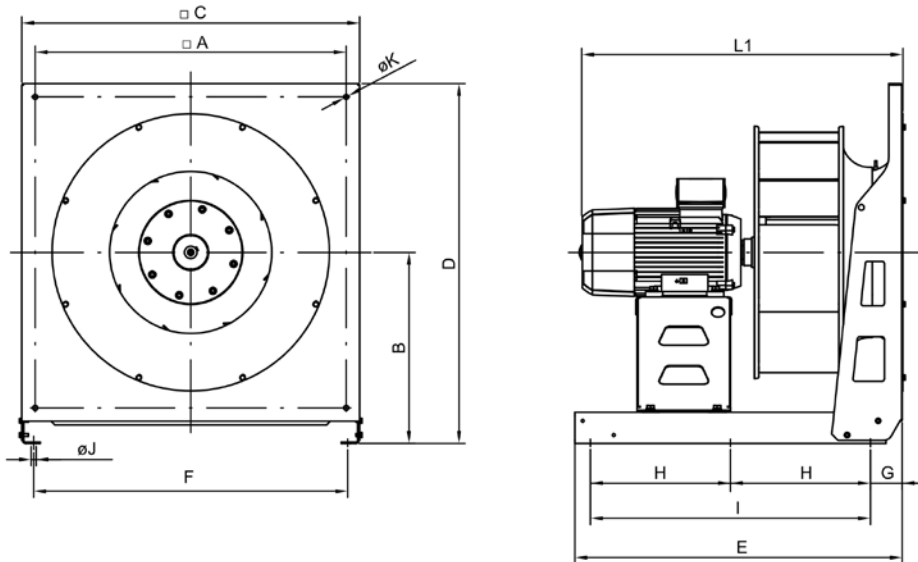
Model	Nominal speed ¹ (r/min)	Maximum admissible current (A)			Installed power (kW)	Max. speed (r/min)	Maximum frequency (Hz)	Approx. weight (Kg)	According ErP*
		230V	400V	690V					
PF-1871-4T-7.5 IE3	1465	-	10.30	5.97	5.5	1280	44	210	2020
PF-1871-4T-10 IE3	1465	-	13.90	8.06	7.5	1430	49	206	2020
PF-1871-4T-15 IE3	1470	-	20.90	12.10	11	1620	55	277	2020
PF-1871-4T-20 IE3	1465	-	27.90	16.20	15	1800	61	296	2020
PF-1871-6T-4 IE3	970	12.00	6.91	-	3	1050	54	195	2020
PF-1871-6T-5.5 IE3	960	15.60	8.99	-	4	1150	60	206	2020

* In accordance with the ErP 2020 draft
¹ The indicated values are determined to 50 Hz motors.

1871

Dimensions mm

Horizontal

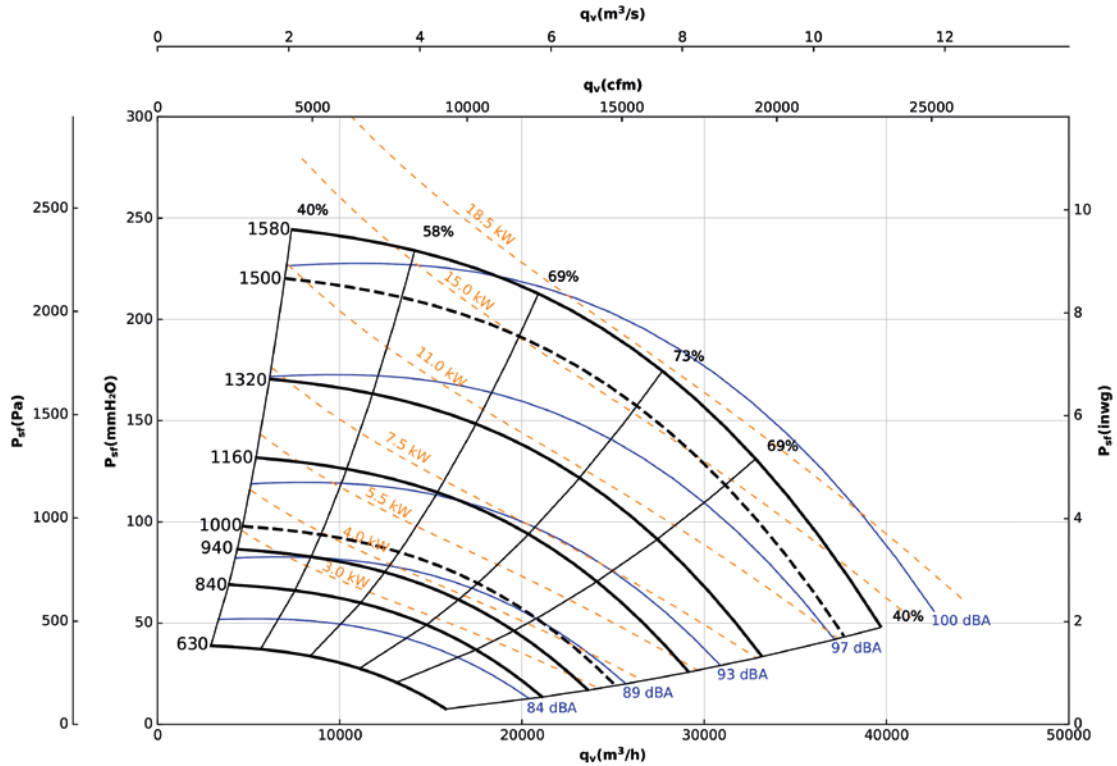


	□A	B	□C	D	E	F	G	H	I	ØJ	ØK	L1
PF-1871-4T-7.5	800	545	960	1025	905	905	70	400	800	11	9	882
PF-1871-4T-10	800	545	960	1025	905	905	70	400	800	11	9	882
PF-1871-4T-15	800	545	960	1025	905	905	70	400	800	11	9	1027
PF-1871-4T-20	800	545	960	1025	905	905	70	400	800	11	9	1027
PF-1871-6T-4	800	545	960	1025	905	905	70	400	800	11	9	882
PF-1871-6T-5.5	800	545	960	1025	905	905	70	400	800	11	9	882

2180

Characteristic curves

Q= Flow rate in m³/h, m³/s and cfm Pe= Static pressure in mm H₂O, Pa and inwg



Technical characteristics

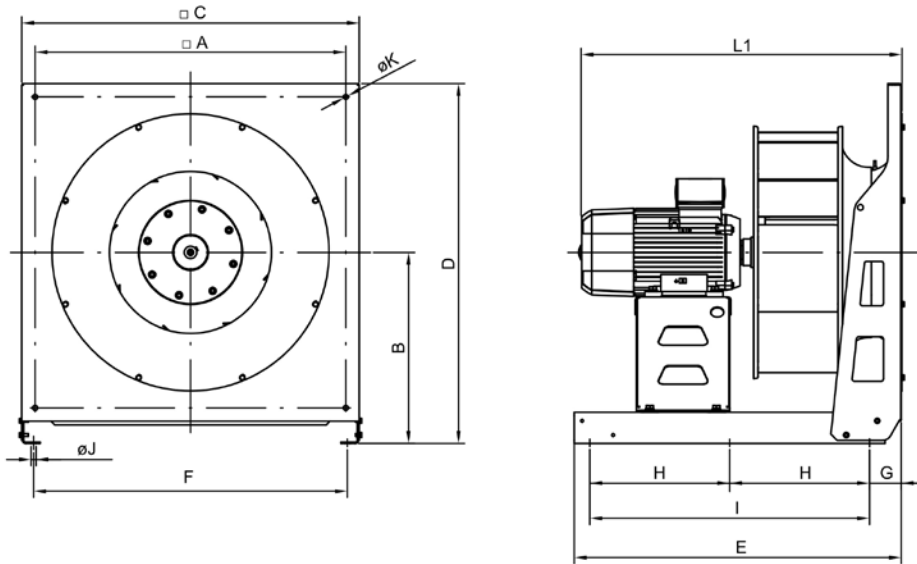
Model	Nominal speed ¹	Maximum admissible current (A)			Installed power (kW)	Max. speed (r/min)	Maximum frequency (Hz)	Approx. weight (Kg)	According ErP*
	(r/min)	230V	400V	690V					
PF-2180-4T-20 IE3	1465	-	27.90	16.20	15	1470	50	312	2020
PF-2180-4T-25 IE3	1470	-	35.10	20.30	18.5	1580	54	330	2020
PF-2180-6T-5.5 IE3	960	15.60	8.99	-	4	940	49	222	2020
PF-2180-6T-7.5 IE3	970	-	11.20	6.49	5.5	1040	54	226	2020
PF-2180-6T-10 IE3	975	-	14.80	8.58	7.5	1160	59	297	2020
PF-2180-6T-15 IE3	975	-	21.90	12.70	11	1320	68	295	2020

* In accordance with the ErP 2020 draft
¹ The indicated values are determined to 50 Hz motors.

2180

Dimensions mm

Horizontal



	□A	B	□C	D	E	F	G	H	I	ØJ	ØK	L1
PF-2180-4T-20	900	545	960	1025	1005	895	70	450	900	11	9	1029
PF-2180-4T-25	900	545	960	1025	1005	895	70	450	900	11	9	1111
PF-2180-6T-5.5	900	545	960	1025	1005	895	70	450	900	11	9	929
PF-2180-6T-7.5	900	545	960	1025	1005	895	70	450	900	11	9	929
PF-2180-6T-10	900	545	960	1025	1005	895	70	450	900	11	9	984
PF-2180-6T-15	900	545	960	1025	1005	895	70	450	900	11	9	1029

Pressure connection

Air flow rate → Q [m³/h]
 Calibration factor → K
 Difference in pressure → Δp [Pa]

$$Q = K x \sqrt{\Delta p}$$

	K Factor*
PF-925	77
PF-1028	94
PF-1031	107
PF-1135	143
PF-1240	182
PF-1445	245
PF-1650	225
PF-1856	310
PF-1663	397
PF-1871	513
PF-2180	726

* Values given for ρ = 1.2 kg/m³ and at 20 °C.

