

# CKDR/EC

Extract units with large door and 40 mm acoustic insulation, equipped with EC Technology IE5 motor



Extraction units with large door for easy maintenance and 40 mm acoustic insulation, equipped with EC Technology IE5 motor with integrated electronics.

**Fan:**

- Galvanised sheet steel structure.
- 40 mm acoustic insulation.
- Backward curved impeller made of sheet steel.
- Changeable opening door direction thanks to its interchangeable hinges.
- Adjustable in different positions.
- Prepared for continuous work at 120 °C.
- Motor cover accessory (CM) supplied with fan.

**EC CONTROL:** Supplied as an optional accessory. Control panel for ventilation systems with EC Technology motors with the electronics integrated in the motor itself. With the following characteristics:

- CPC: Constant pressure control.
- CFC: Constant flow control.
- DAY/NIGHT: Double pressure setpoint adjustment according to time of day.
- External sensor: compatible with temperature, humidity, air quality or CO sensor.
- Equipment preconfigured in constant pressure mode with 100 Pa set point.

**Finish:**

- Anti-corrosive in galvanized steel sheet.



EC TECHNOLOGY MOTOR with integrated electronics

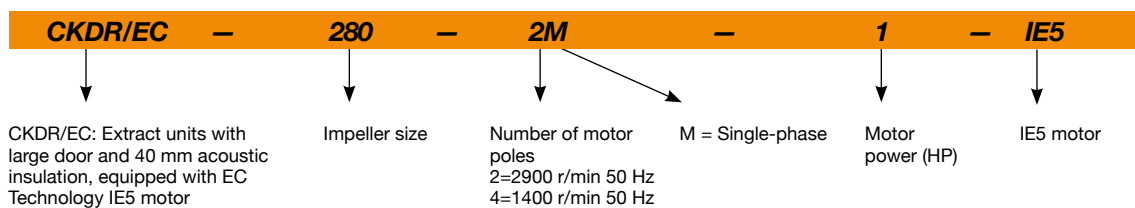


EC CONTROL Supplied as an optional accessory

**Motor:**

- High efficiency EC Technology motors with integrated electronics, regulated by 0-10 V or 4-20 mA.
- IE5 efficiency motors, class F and IP55 protection.
- Single-phase 230 V 50/60 Hz.
- Working temperature: -25 °C +60 °C.

## Order code



## Technical characteristics

Model	Speed	Maximum admissible current (A)	Max. electric power	Maximum flow rate	Sound pressure level	Approx. weight
	(r/min)	230V	(kW)	(m³/h)	dB (A)	(Kg)
CKDR/EC-280-2M-1 IE5	2825	5.9	0.75	2090	71	38
CKDR/EC-315-2M-1.5 IE5	2830	8.7	1.10	3900	72	55
CKDR/EC-355-4M-0.5 IE5	1400	3.4	0.37	2670	60	71
CKDR/EC-400-4M-0.75 IE5	1400	4.8	0.55	3770	56	71
CKDR/EC-450-4M-1 IE5	1410	5.8	0.75	5020	60	77
CKDR/EC-500-4M-1.5 IE5	1455	8.9	1.10	7440	62	106



## Erp. (Energy Related Products)

Information on Directive 2009/125/EC can be downloaded from the SODECA website or the QuickFan selector programme.

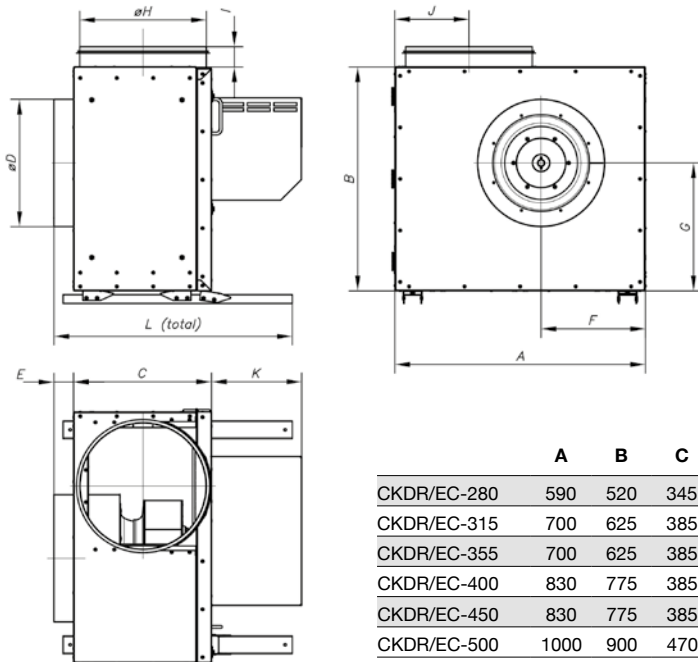
### Acoustic characteristics

The indicated values are determined by measuring the sound pressure level and sound power in dB(A) obtained in a free field at a distance equivalent to twice the size of the fan plus the impeller diameter, with a minimum of 1.5 m.

Sound power spectrum Lw(A) in dB(A) per Hz frequency band

	63	125	250	500	1000	2000	4000	8000		63	125	250	500	1000	2000	4000	8000
CKDR/EC-280-2M-1	53	67	73	74	76	77	73	71	CKDR/EC-400-4M-0.75	41	60	62	63	65	64	58	53
CKDR/EC-315-2M-1,5	50	67	77	77	79	79	74	71	CKDR/EC-450-4M-1	45	66	67	67	68	69	64	58
CKDR/EC-355-4M-0.5	43	62	64	65	68	67	61	55	CKDR/EC-500-4M-1.5	49	68	64	69	74	68	63	60

### Dimensions mm



	A	B	C	ØD	E	F	G	ØH	I	J	K	L
CKDR/EC-280	590	520	345	315	52	245	290	315	48	192,5	210	612
CKDR/EC-315	700	625	385	355	55	290	356	355	56	207	210	665
CKDR/EC-355	700	625	385	355	55	290	356	355	56	207	188	665
CKDR/EC-400	830	775	385	355	55	354	418	355	56	212	209	660
CKDR/EC-450	830	775	385	355	55	354	418	355	56	212	229	660
CKDR/EC-500	1000	900	470	400	75	420	505	400	75	244	229	865

### Accessories

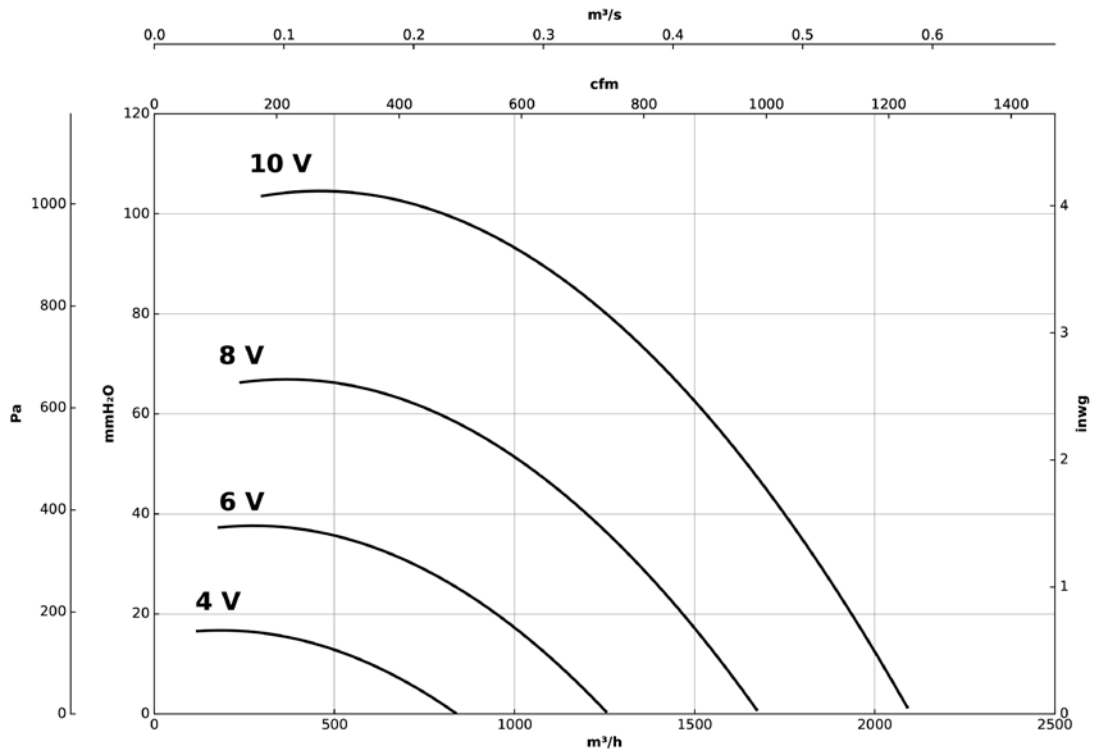


### Characteristic curves

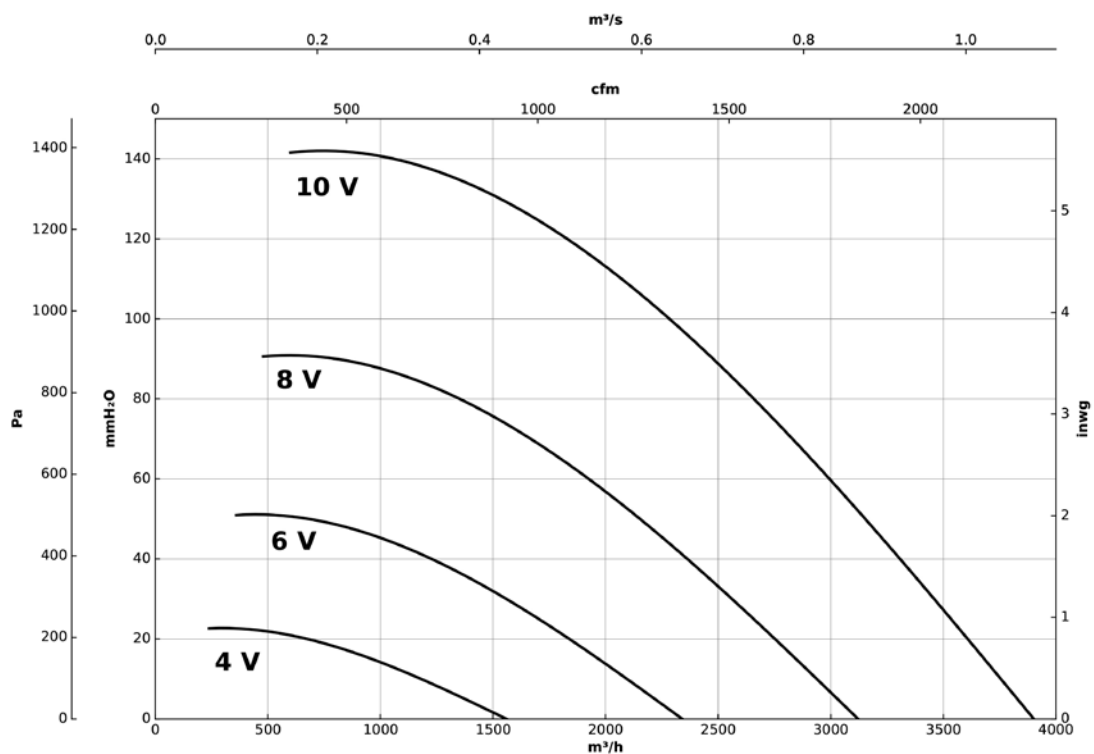
Q= Flow rate in m<sup>3</sup>/h, m<sup>3</sup>/s and cfm

Pe= Static pressure in mm H<sub>2</sub>O, Pa and inwg

#### CKDR-280-2M-1 IE5



#### CKDR-315-2M-1,5 IE5

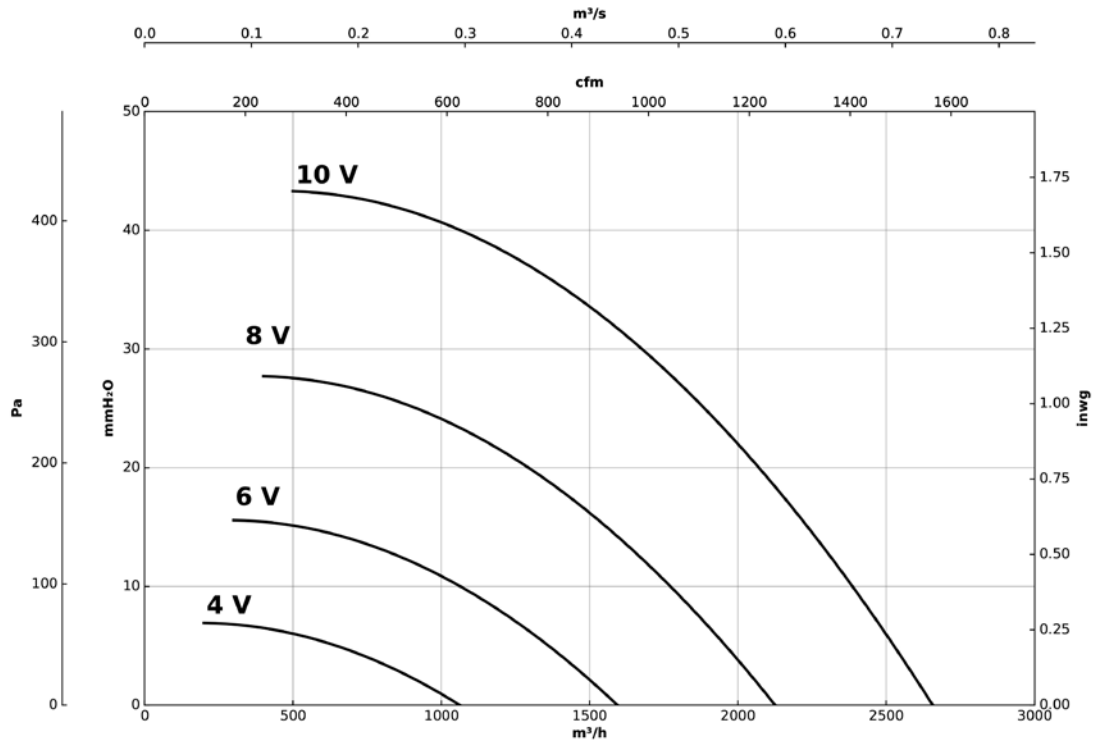


### Characteristic curves

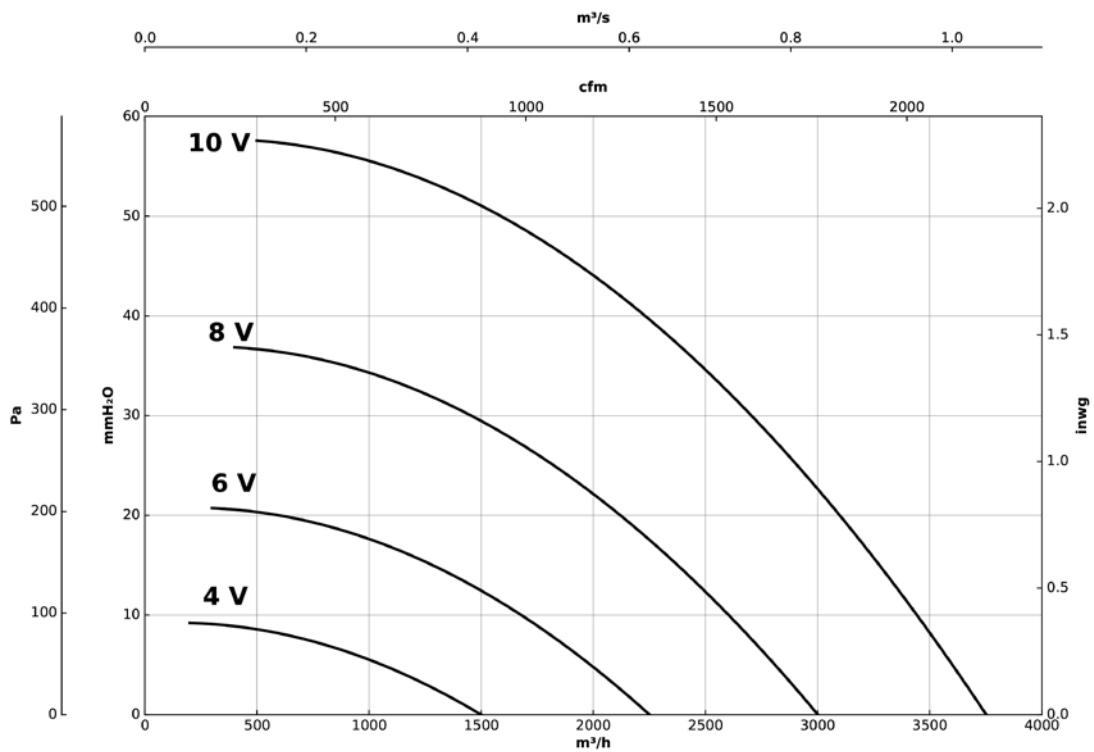
Q= Flow rate in m<sup>3</sup>/h, m<sup>3</sup>/s and cfm

Pe= Static pressure in mm H<sub>2</sub>O, Pa and inwg

#### CKDR-355-4M-0.5 IE5



#### CKDR-400-4M-0.75 IE5

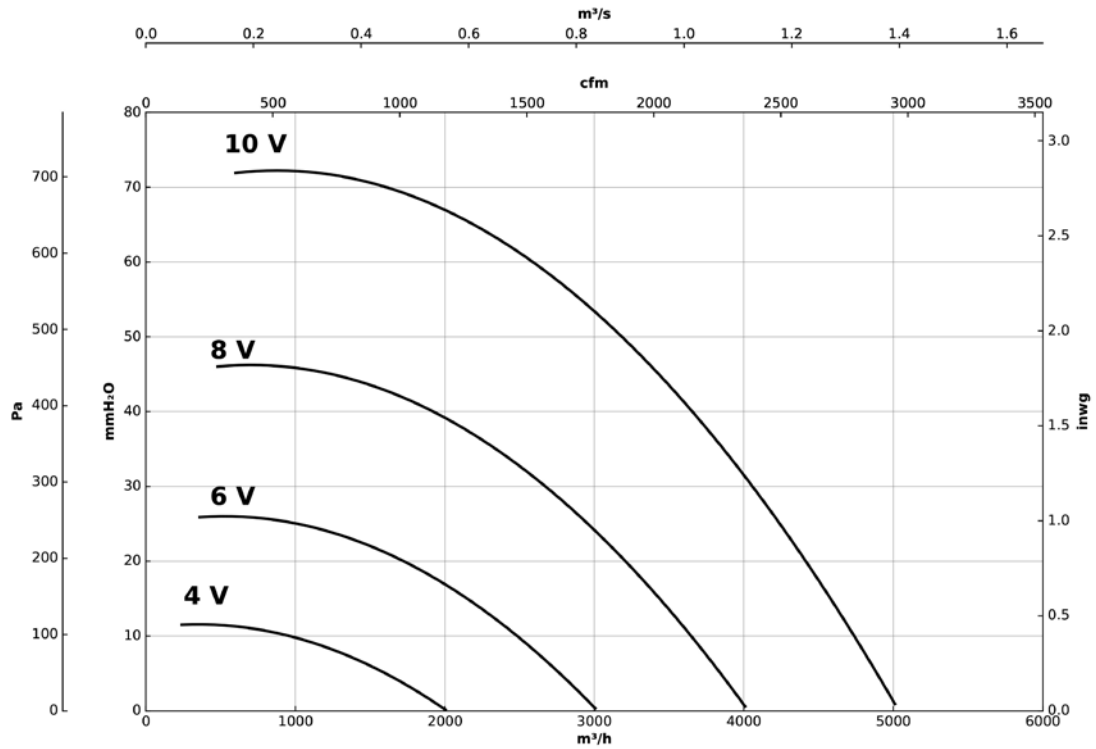


### Characteristic curves

Q= Flow rate in m<sup>3</sup>/h, m<sup>3</sup>/s and cfm

Pe= Static pressure in mm H<sub>2</sub>O, Pa and inwg

#### CKDR-450-4M-1 IE5



#### CKDR-500-4M-1.5 IE5

