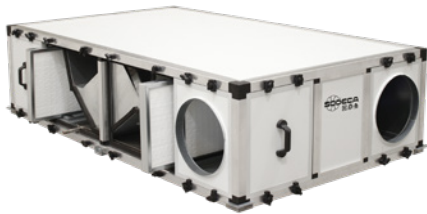


RECUP/EC-BS



Heat recovery units with counter flow plate exchanger, automatic control and EC Technology motors, for installation in false ceilings



Common features:

- EC type Plug Fan adjustable 0-10 V.
- Built-in maintenance disconnect switch.
- Thermal efficiency of the equipment 85-90%.
- Structure with high quality reinforced aluminum profiles.
- Panels with a 25 mm thick thermal and acoustic insulation; exterior made of prefinished sheet.
- EPS type panels with thermal bridge break.
- High efficiency filtration:
 - M6 + F8.
 - F7 + F9.
- Broad access for maintenance.
- Free cooling with motorized damper to perform BY-PASS.
- Condensation collection tray and drain.

Built-in control box:

- Control for free cooling through motorized BY-PASS.
- Fan speed control by manual selection or by optional external sensors (CO2 or pressure).
- Integrated control system with remote control panel.

- STOP/START and speed control available through control panel or external contacts.
- Built-in temperature and humidity sensors.
- Filters condition check by means of built-in pressure switches.
- Fault alarm management and shutdown due to fire alarm.
- Compatible with MODBUS RTU.

Finish:

- Aluminium frame and external prefinished sheet structure.
- 25 mm thermal and acoustic insulation panels.
- Low profile models for false ceiling installation.
- Interchangeable nozzles for better adaptation.

On request:

- External battery modules for air treatment.
- Filters with special efficiencies.
- Modules with UVc germicidal chamber.

Order code

RECUP/EC-BS – 800 – BS – M6+F8

RECUP/EC-BS: Heat recovery units with counter flow plate exchanger, automatic control and EC Technology motors, for installation in false ceilings

Size

Horizontal ducts and installation in false ceilings

Filters M6+F8
Filters F7+F9

Characteristics based on size

	RECUP/ EC-800-BS	RECUP/ EC-1200-BS	RECUP/ EC-1600-BS	RECUP/ EC-2100-BS	RECUP/ EC-2700-BS
Supply filter (ODA)	M6+F8 / F7+F9	M6+F8 / F7+F9	M6+F8 / F7+F9	M6+F8 / F7+F9	M6+F8 / F7+F9
Extraction filter (ETA)	M6	M6	M6	M6	M6
Free cooling function by means of a motorised by-pass	YES	YES	YES	YES	YES
Panel thickness	25 mm	25 mm	25 mm	25 mm	25 mm
Condensate exhaust	YES	YES	YES	YES	YES
Built-in pressure switches for filter condition control	YES	YES	YES	YES	YES
Safety and maintenance switch	YES	YES	YES	YES	YES
Built-in control panel	YES	YES	YES	YES	YES

Technical characteristics

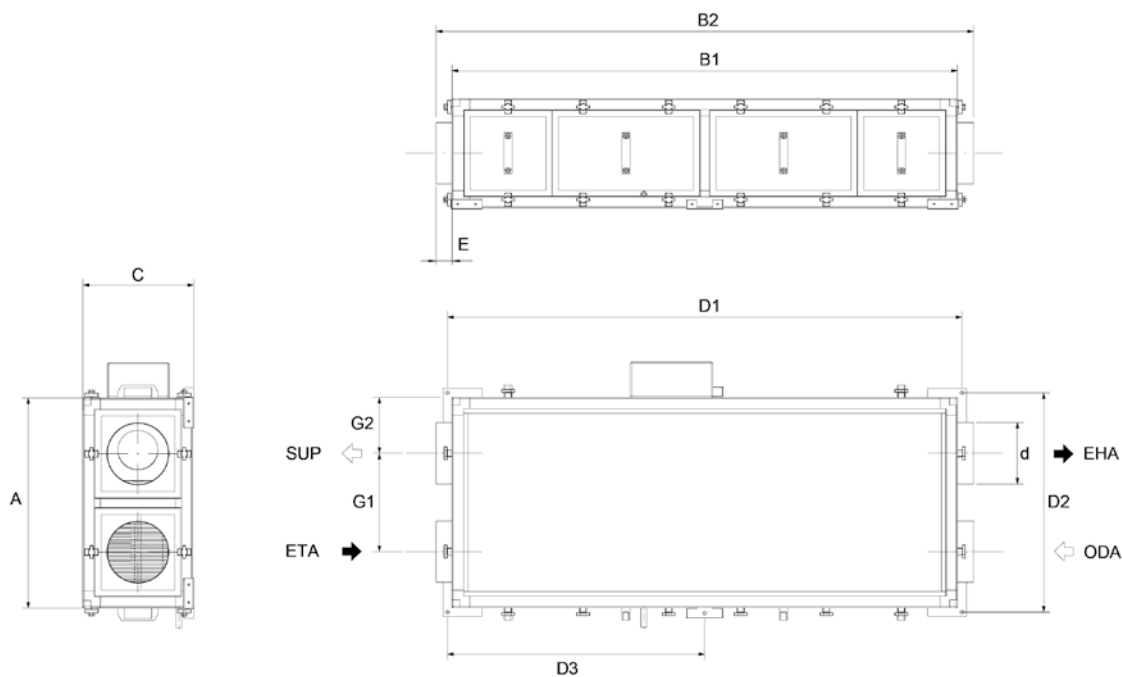
Model	Nominal flow rate (m ³ /h)	Recovery unit efficiency (%)	Available pressure (Pa)	Nominal power (kW)	Nominal current (A)	Voltage 50/60 Hz (V)	Irradiated sound level at 5 m dB (A)	Approx. weight (Kg)	According ErP
RECUP/EC-800-BS	800	86.5	70	0.39	2.91	1/230	45	78	2018
RECUP/EC-1200-BS	1200	86.8	70	0.32	1.16	1/230	34	105	2018
RECUP/EC-1600-BS	1600	86.2	100	0.53	2.11	1/230	40	178	2018
RECUP/EC-2100-BS	2100	88.0	100	0.76	3.14	1/230	43	216	2018
RECUP/EC-2700-BS	2700	86.9	100	1.23	5.17	1/230	50	216	2018



Erp. (Energy Related Products)

Information on Directive 2009/125/EC can be downloaded from the SODECA website or the QuickFan selector programme.

Dimensions mm



	A	B1	B2	C	D1	D2	D3	E	G1	G2	d
RECUP/EC-800-BS	684	1644	1694	357	1664	704	832	25	320	182	200
RECUP/EC-1200-BS	1124	1890	1940	480	1910	1144	955	25	695	214	315
RECUP/EC-1600-BS	1250	1970	2020	480	1990	1270	995	25	781	235	355
RECUP/EC-2100-BS	1250	2198	2248	620	2218	1270	1109	25	736	257	400
RECUP/EC-2700-BS	1250	2198	2248	620	2218	1270	1109	25	736	257	400

ODA: Fresh outdoor air / SUP: Air impulsion to the premise / EHA: Exit of exhaust air / ETA: Air extraction from premises

Accessories

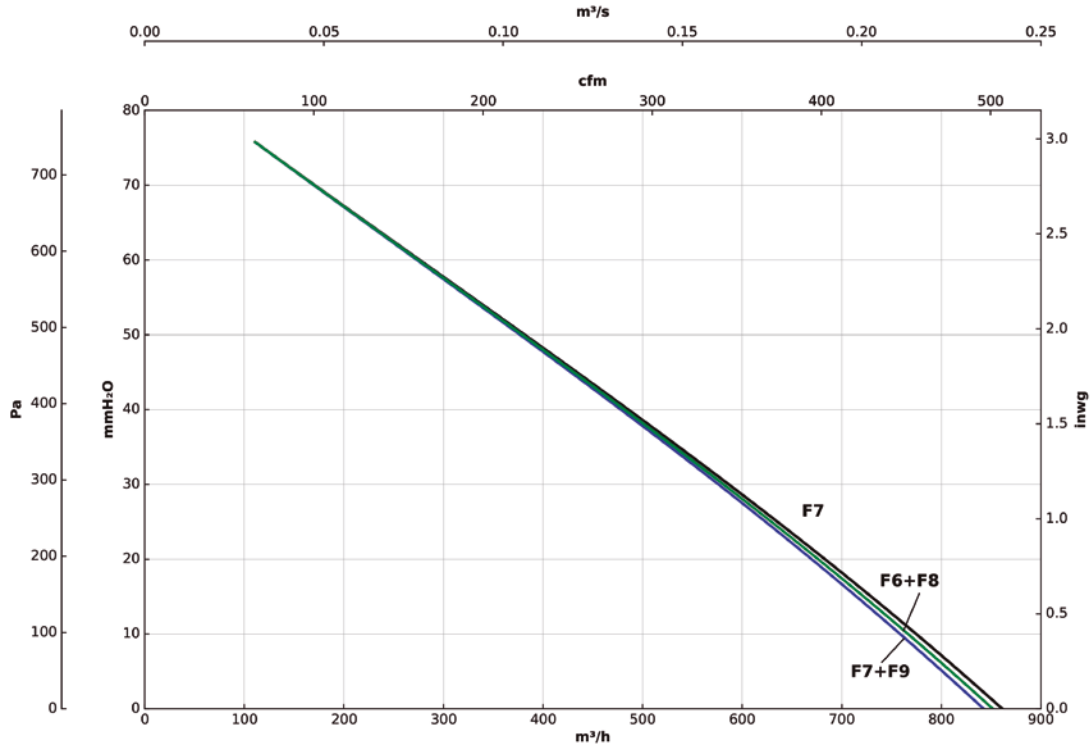


Characteristic curves

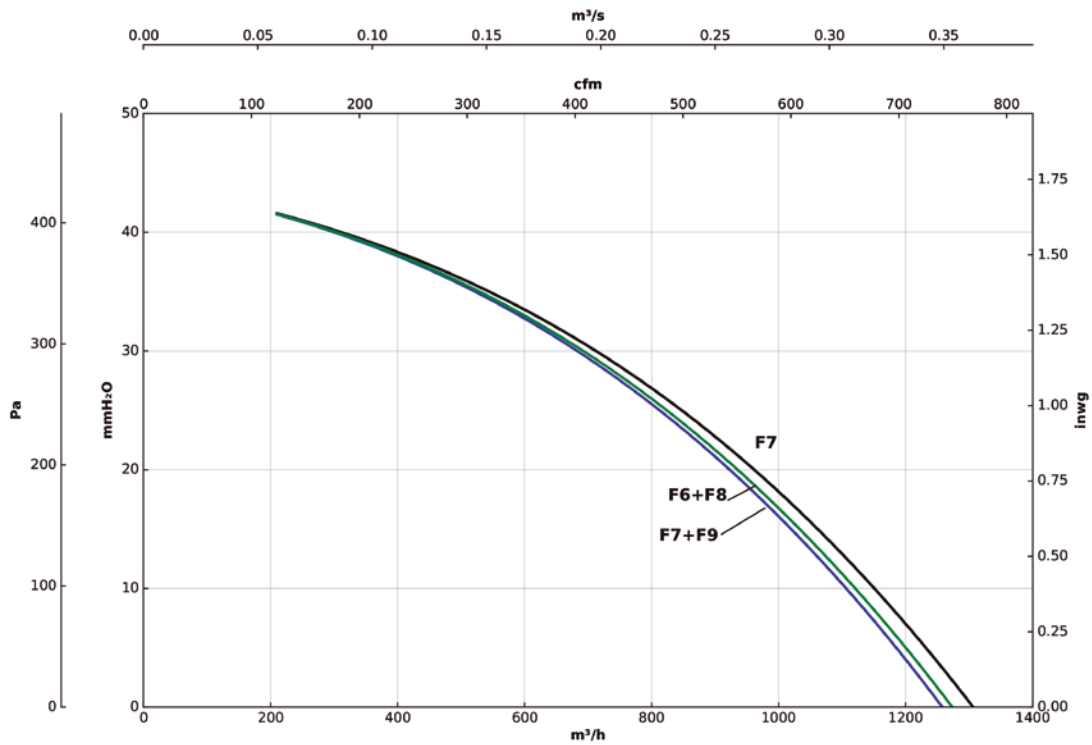
Q= Flow rate in m³/h, m³/s and cfm

Pe= Static pressure in mm H₂O, Pa and inwg

RECUP/EC-800-BS



RECUP/EC-1200-BS

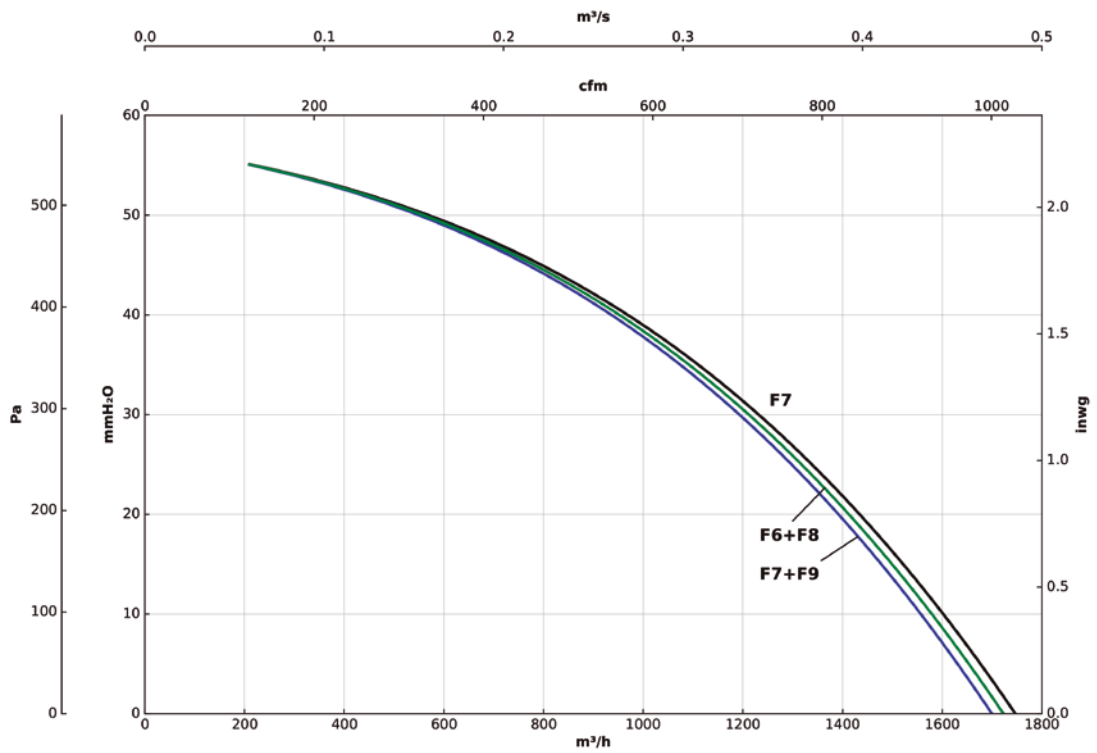


Characteristic curves

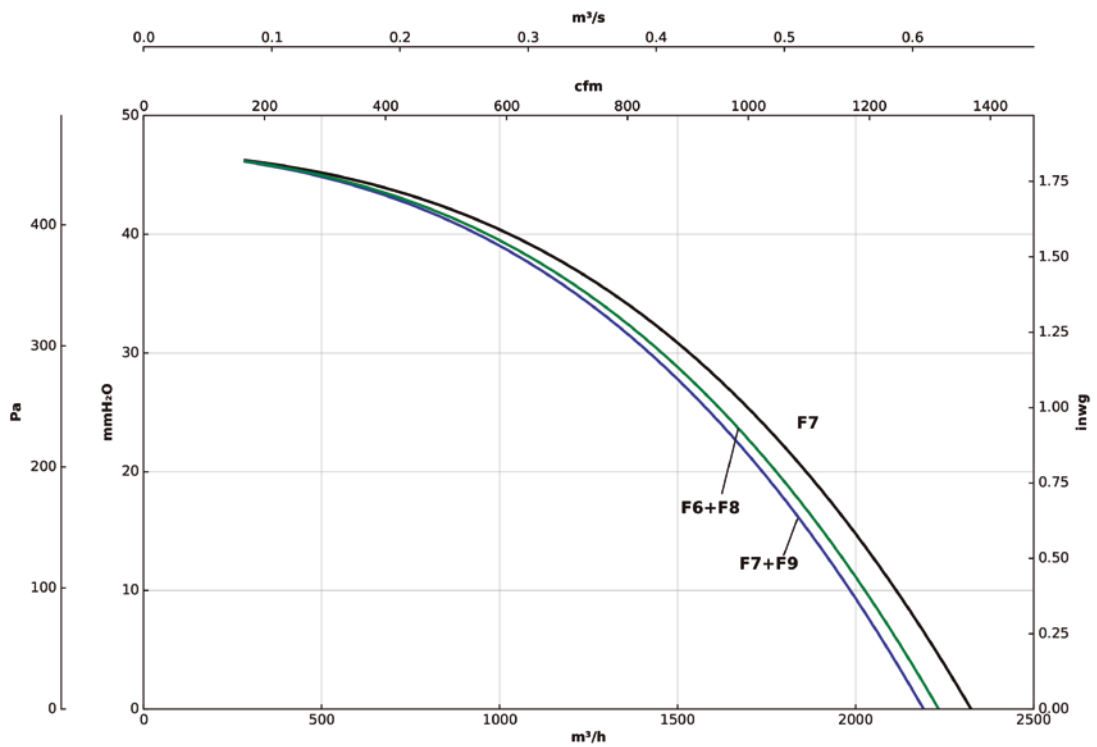
Q= Flow rate in m³/h, m³/s and cfm

Pe= Static pressure in mm H₂O, Pa and inwg

RECUP/EC-1600-BS



RECUP/EC-2100-BS

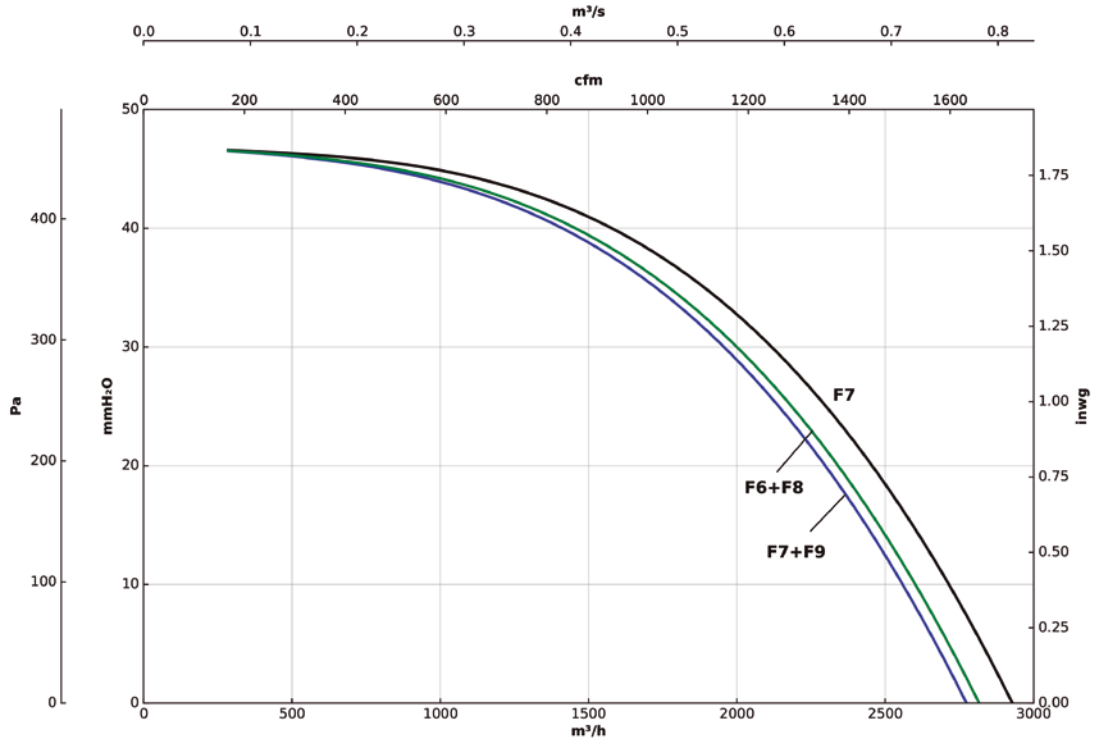


Characteristic curves

Q= Flow rate in m³/h, m³/s and cfm

Pe= Static pressure in mm H₂O, Pa and inwg

RECUP/EC-2700-BS



Efficiency curves

