



PROJECT REPORT

VACUMEX®
The Power to move air...

CPV/ATEX

CPV/ATEX

CPV/ATEX

#	Ref.	Remark	Model/Tool	Code	Qty.	Speed (rpm)	Max. admissible current (A)	Power (kW) [*]	Design flowrate (m ³ /h)	Design pressure (Pa)	Flowrate (m ³ /h)	Pressure (Pa)
1			CPV/ATEX-1630-6T/2G EX EB	1008050	1	910	2	0.55	-	-	-	-
2			CPV/ATEX-815-2T/2G EX DB	1008003	1	2810	0.94	0.37	-	-	-	-
3			CPV/ATEX-815-4T/2G EX DB	1008004	1	1360	0.69	0.25	-	-	-	-
4			CPV/ATEX-1020-2T/2G EX DB	1008010	1	2800	1.74	0.75	-	-	-	-
5			CPV/ATEX-1020-4T/2G EX DB	1008005	1	1360	0.69	0.25	-	-	-	-
6			CPV/ATEX-1020-6T/2G EX DB	1008006	1	880	1.4	0.25	-	-	-	-
7			CPV/ATEX-1325-2T/2G EX DB	1008011	1	2850	4.51	2.2	-	-	-	-
8			CPV/ATEX-1325-4T/2G EX DB	1008007	1	1360	1.5	0.37	-	-	-	-
9			CPV/ATEX-1325-6T/2G EX DB	1008008	1	880	1.4	0.25	-	-	-	-
10			CPV/ATEX-1630-4T/2G EX DB	1008012	1	1420	4	1.5	-	-	-	-
11			CPV/ATEX-1630-6T/2G EX DB	1008009	1	910	2	0.55	-	-	-	-
12			CPV/ATEX-815-2T/2G EX EB	1008044	1	2810	0.93	0.37	-	-	-	-
13			CPV/ATEX-815-4T/2G EX EB	1008045	1	1360	0.72	0.25	-	-	-	-
14			CPV/ATEX-1020-2T/2G EX EB	1008051	1	2800	1.74	0.75	-	-	-	-
15			CPV/ATEX-1020-4T/2G EX EB	1008046	1	1360	0.72	0.25	-	-	-	-
16			CPV/ATEX-1020-6T/2G EX EB	1008047	1	880	1.4	0.25	-	-	-	-
17			CPV/ATEX-1325-2T/2G EX EB	1008052	1	2850	5.02	2.2	-	-	-	-
18			CPV/ATEX-1325-4T/2G EX EB	1008048	1	1360	1.5	0.37	-	-	-	-
19			CPV/ATEX-1325-6T/2G EX EB	1008049	1	880	1.4	0.25	-	-	-	-
20			CPV/ATEX-1630-4T/2G EX EB	1008053	1	1420	4	1.5	-	-	-	-
TOTAL					20			13.48				

[*] Rated Mechanical Power except for values with * which are Max. Electrical Power



INDEX

CPV/ATEX-1630-6T/2G EX EB	4
CPV/ATEX-815-2T/2G EX DB	7
CPV/ATEX-815-4T/2G EX DB	10
CPV/ATEX-1020-2T/2G EX DB	13
CPV/ATEX-1020-4T/2G EX DB	16
CPV/ATEX-1020-6T/2G EX DB	19
CPV/ATEX-1325-2T/2G EX DB	22
CPV/ATEX-1325-4T/2G EX DB	25
CPV/ATEX-1325-6T/2G EX DB	28
CPV/ATEX-1630-4T/2G EX DB	31
CPV/ATEX-1630-6T/2G EX DB	34
CPV/ATEX-815-2T/2G EX EB	37
CPV/ATEX-815-4T/2G EX EB	40
CPV/ATEX-1020-2T/2G EX EB	43
CPV/ATEX-1020-4T/2G EX EB	46
CPV/ATEX-1020-6T/2G EX EB	49
CPV/ATEX-1325-2T/2G EX EB	52
CPV/ATEX-1325-4T/2G EX EB	55
CPV/ATEX-1325-6T/2G EX EB	58
CPV/ATEX-1630-4T/2G EX EB	61



CPV/ATEX-1630-6T/2G EX EB

Code: 1008050



Centrifugal fans made of corrosion-proof plastic material, with ATEX 2G or 2D certification and Ex db, Ex eb or Ex tb motor

Centrifugal single inlet fans made of ATEX antistatic plastic material. ATEX 2G or 2D certification with flameproof Ex db, increased safety Ex eb or dust ignition proof Ex tb motor to work in explosive gas or dust atmospheres.



Fan:

- Casing made of ATEX antistatic plastic material.
- Forward curved impeller, in ATEX antistatic plastic material.
- Maximum temperature of air to be carried: -25 °C +70 °C.
- Standard marking with flameproof motor (Ex db): II 2G Ex h IIB T4 Gb.
- Standard marking with increased safety motor (Ex eb): II 2G Ex h IIB T3 Gb.
- Standard marking with motor for dust ignition proof (Ex tb): II 2D Ex h IIIC T135 °C Db.

Motor:

- Class F motors with ball bearings, IP55 protection. ATEX certification flameproof Ex db, increased safety Ex eb or dust ignition proof Ex tb.
- Three-phase 230/400 V 50 Hz (up to 4 kW) and 400/690 V 50 Hz (powers greater than 4 kW).
- Working temperature: -20 °C +40 °C.

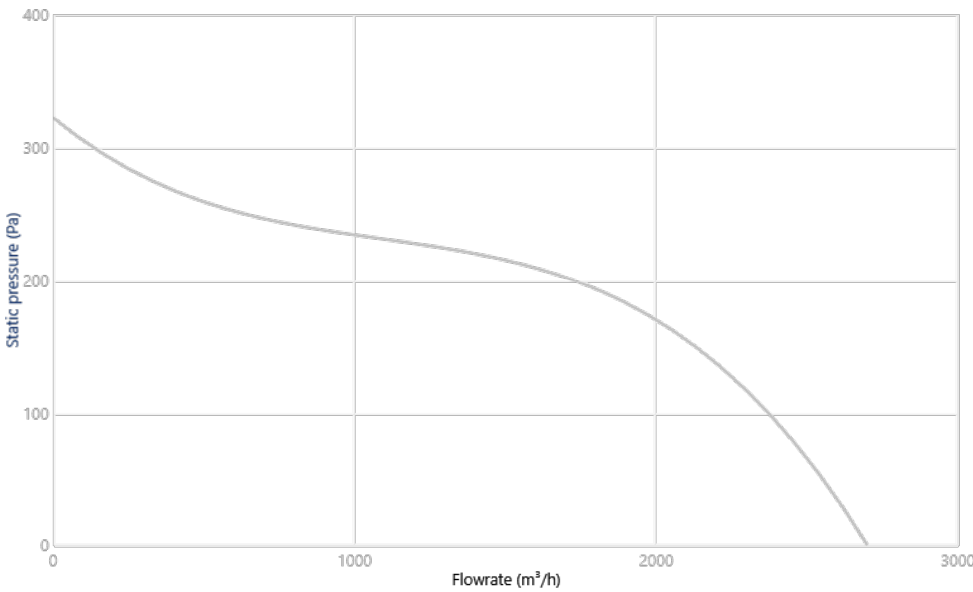
Finish:

- Anti-corrosive in ATEX plastic material.

On request:

- Motors with built-in PTC.
- Special windings for different voltages and frequencies.
- ATEX construction for flammable dust.
- ATEX fan with greater protection than the standard marking.

CHARACTERISTIC CURVE AND ACOUSTICS AT 1.2KG/M³

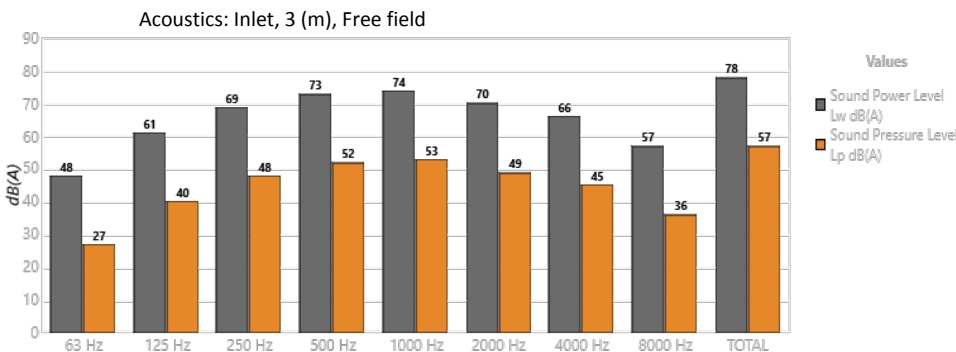


Design Point

Q (m³/h)	
Ps (Pa)	

Service Point (SP)

Q (m³/h)	-
Ps (Pa)	-
Pd (Pa)	-
Pt (Pa)	-



Band	Lw dB(A)	Lp dB(A)
63 Hz	48	27
125 Hz	61	40
250 Hz	69	48
500 Hz	73	52
1000 Hz	74	53
2000 Hz	70	49
4000 Hz	66	45
8000 Hz	57	36
TOTAL	78	57

TECHNICAL CHARACTERISTICS

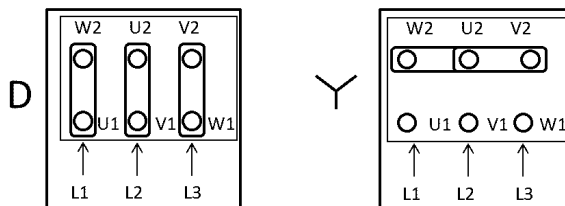
Airflow maximum (m ³ /h)	2700
Speed (rpm)	910
Maximum static pressure (Pa)	322.3
Maximum total pressure (Pa)	322.3

ERP

Remarks	ErP: Exclude. ATEX
---------	--------------------

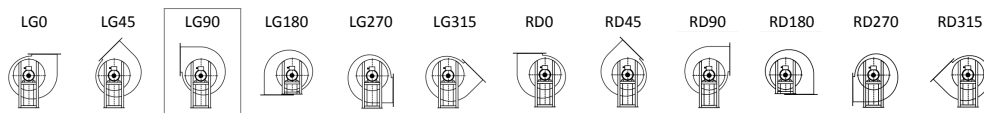
MOTOR DATA

Rated Mechanical Power (kW)	0.55
Hz/phases	50/3
Motor (rpm)	930
Poles	6P
Max. current (A) 380-415 V Y	2
Max. current (A) 220-240 V D	3.46
Motor protection	IP55
Motor frame size	80



Data can change, please check motor plate

FAN POSITIONS



LG90: Standard orientation

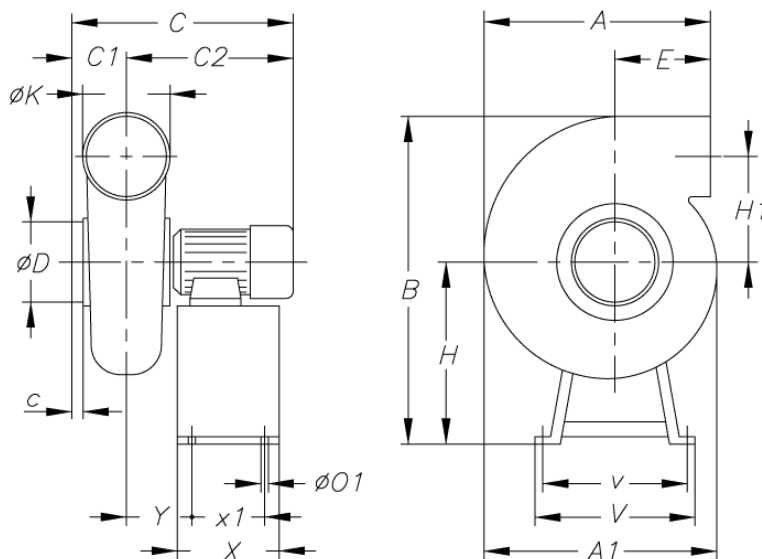
DIMENSIONS

A	A1	B	C	C1	C2	c	øD	E	H	H1	øK	øO1	V
480	602	880	503	145	358	35	250	117	430	323	250	8	450

v	X	x1	Y
430	240	220	138

Dimensions without explicitly defined units are shown in millimeters (mm). Dimensions depending on the motor are approximate

Approx. weight (kg)	27
---------------------	----



AVAILABLE ACCESSORIES

General accessories available

INT-KG-
20/3CA

AET



S

INT/ATEX
16/3CA

Inlet accessories available

Inlet accessories not available

Outlet accessories available

Outlet accessories not available

It must be checked that the accessory is suitable for the fan model

CPV/ATEX-815-2T/2G EX DB

Code: 1008003



Centrifugal fans made of corrosion-proof plastic material, with ATEX 2G or 2D certification and Ex db, Ex eb or Ex tb motor

Centrifugal single inlet fans made of ATEX antistatic plastic material. ATEX 2G or 2D certification with flameproof Ex db, increased safety Ex eb or dust ignition proof Ex tb motor to work in explosive gas or dust atmospheres.



Fan:

- Casing made of ATEX antistatic plastic material.
- Forward curved impeller, in ATEX antistatic plastic material.
- Maximum temperature of air to be carried: -25 °C +70 °C.
- Standard marking with flameproof motor (Ex db): II 2G Ex h IIB T4 Gb.
- Standard marking with increased safety motor (Ex eb): II 2G Ex h IIB T3 Gb.
- Standard marking with motor for dust ignition proof (Ex tb): II 2D Ex h IIIC T135 °C Db.

Motor:

- Class F motors with ball bearings, IP55 protection. ATEX certification flameproof Ex db, increased safety Ex eb or dust ignition proof Ex tb.
- Three-phase 230/400 V 50 Hz (up to 4 kW) and 400/690 V 50 Hz (powers greater than 4 kW).
- Working temperature: -20 °C +40 °C.

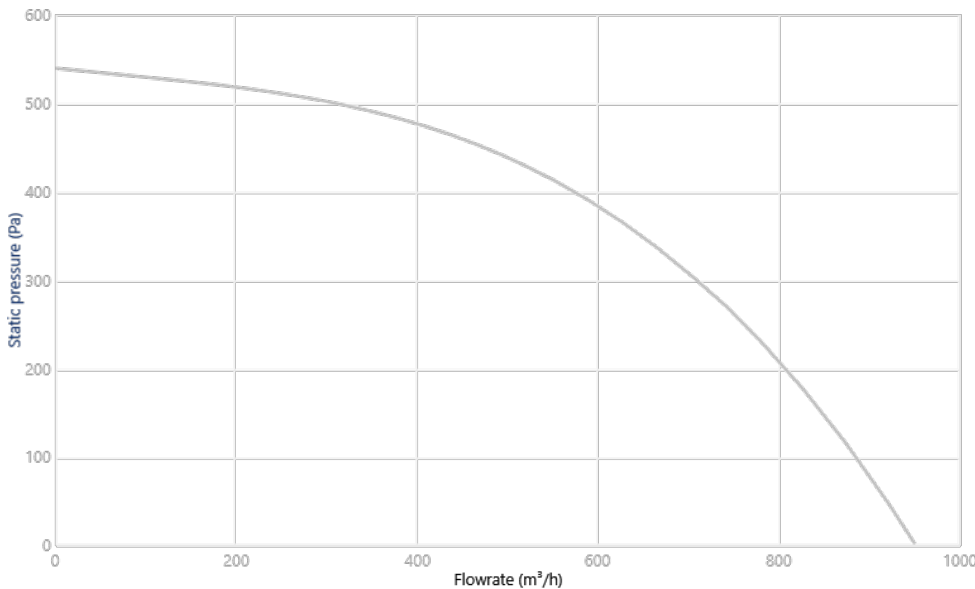
Finish:

- Anti-corrosive in ATEX plastic material.

On request:

- Motors with built-in PTC.
- Special windings for different voltages and frequencies.
- ATEX construction for flammable dust.
- ATEX fan with greater protection than the standard marking.

CHARACTERISTIC CURVE AND ACOUSTICS AT 1.2KG/M³



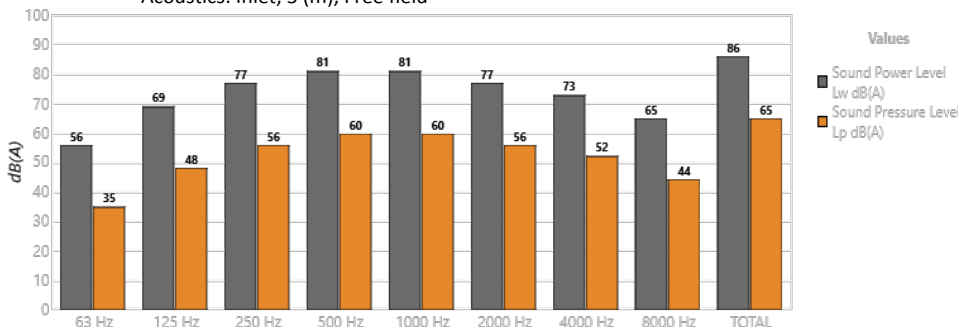
Design Point

Q (m³/h)	
Ps (Pa)	

Service Point (SP)

Q (m³/h)	-
Ps (Pa)	-
Pd (Pa)	-
Pt (Pa)	-

Acoustics: Inlet, 3 (m), Free field



Band	Lw dB(A)	Lp dB(A)
63 Hz	56	35
125 Hz	69	48
250 Hz	77	56
500 Hz	81	60
1000 Hz	81	60
2000 Hz	77	56
4000 Hz	73	52
8000 Hz	65	44
TOTAL	86	65

TECHNICAL CHARACTERISTICS

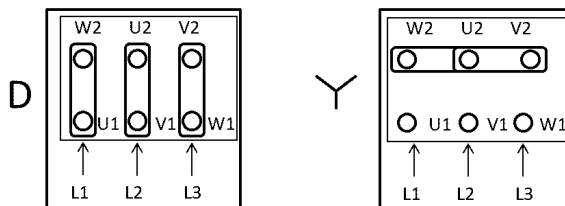
Airflow maximum (m ³ /h)	950
Speed (rpm)	2810
Maximum static pressure (Pa)	539.2
Maximum total pressure (Pa)	539.2

ERP

Remarks	ErP: Exclude. ATEX
---------	--------------------

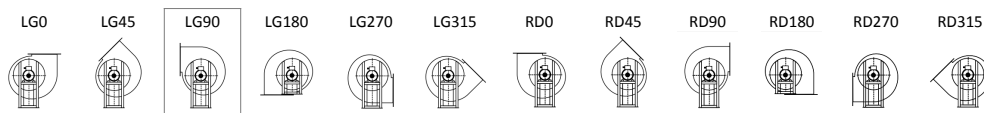
MOTOR DATA

Rated Mechanical Power (kW)	0.37
Hz/phases	50/3
Motor (rpm)	2820
Poles	2P
Max. current (A) 380-415 V Y	0.94
Max. current (A) 220-240 V D	1.63
Motor protection	IP65
Motor frame size	71A



Data can change, please check motor plate

FAN POSITIONS



LG90: Standard orientation

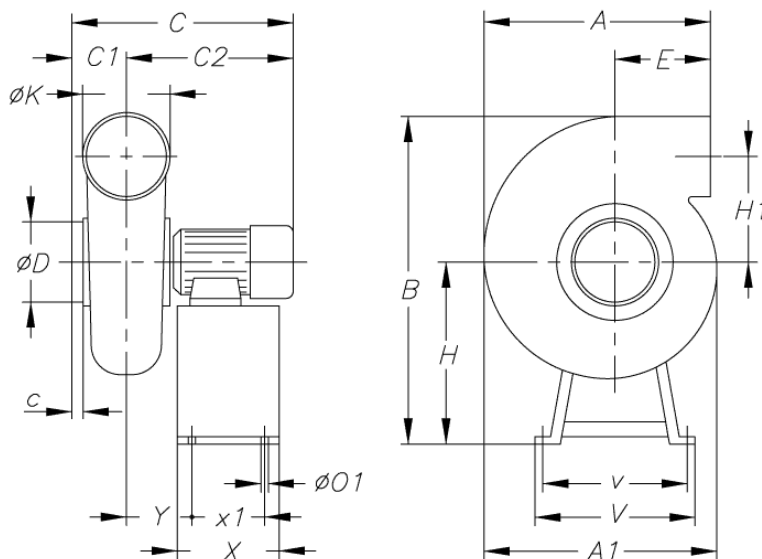
DIMENSIONS

A	A1	B	C	C1	C2	c	øD	E	H	H1	øK	øO1	V
307	335	521	360	100	260	30	125	100	281	177.5	125	8	355

v	X	x1	Y
335	180	160	90

Dimensions without explicitly defined units are shown in millimeters (mm). Dimensions depending on the motor are approximate

Approx. weight (kg)	14
---------------------	----



AVAILABLE ACCESSORIES

General accessories available


 INT-KG-
20/3CA

 VSD3/A-RFT-
1

 VSD1/A-RFM-
0.5

 VSD3/A-RFT-
1-IP66

 VSD1/A-RFM-
0.5-IP66


AET



S


 INT/ATEX
16/3CA

Inlet accessories available

Inlet accessories not available

Outlet accessories available

Outlet accessories not available

It must be checked that the accessory is suitable for the fan model

CPV/ATEX-815-4T/2G EX DB

Code: 1008004



Centrifugal fans made of corrosion-proof plastic material, with ATEX 2G or 2D certification and Ex db, Ex eb or Ex tb motor

Centrifugal single inlet fans made of ATEX antistatic plastic material. ATEX 2G or 2D certification with flameproof Ex db, increased safety Ex eb or dust ignition proof Ex tb motor to work in explosive gas or dust atmospheres.



Fan:

- Casing made of ATEX antistatic plastic material.
- Forward curved impeller, in ATEX antistatic plastic material.
- Maximum temperature of air to be carried: -25 °C +70 °C.
- Standard marking with flameproof motor (Ex db): II 2G Ex h IIB T4 Gb.
- Standard marking with increased safety motor (Ex eb): II 2G Ex h IIB T3 Gb.
- Standard marking with motor for dust ignition proof (Ex tb): II 2D Ex h IIIC T135 °C Db.

Motor:

- Class F motors with ball bearings, IP55 protection. ATEX certification flameproof Ex db, increased safety Ex eb or dust ignition proof Ex tb.
- Three-phase 230/400 V 50 Hz (up to 4 kW) and 400/690 V 50 Hz (powers greater than 4 kW).
- Working temperature: -20 °C +40 °C.

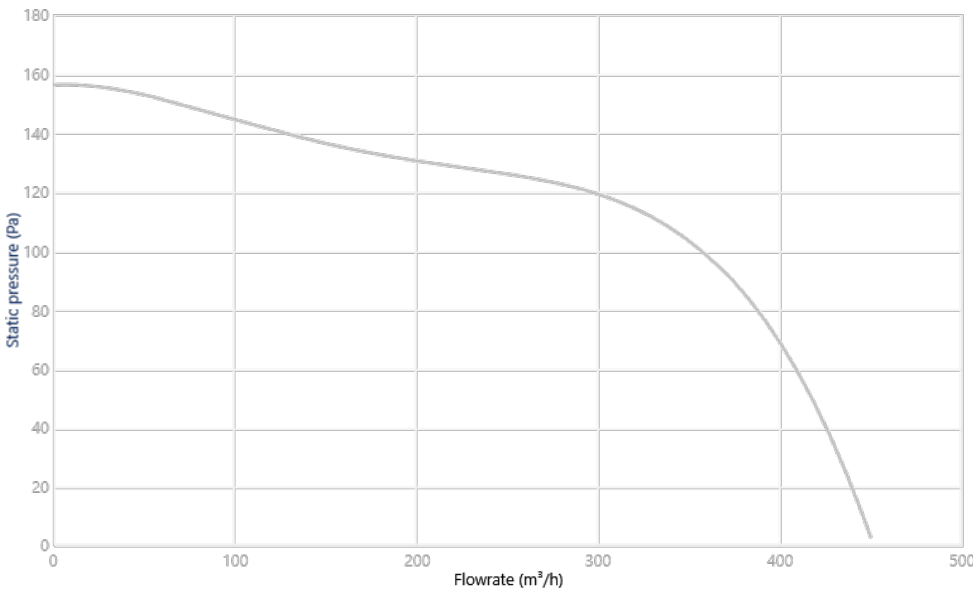
Finish:

- Anti-corrosive in ATEX plastic material.

On request:

- Motors with built-in PTC.
- Special windings for different voltages and frequencies.
- ATEX construction for flammable dust.
- ATEX fan with greater protection than the standard marking.

CHARACTERISTIC CURVE AND ACOUSTICS AT 1.2KG/M³



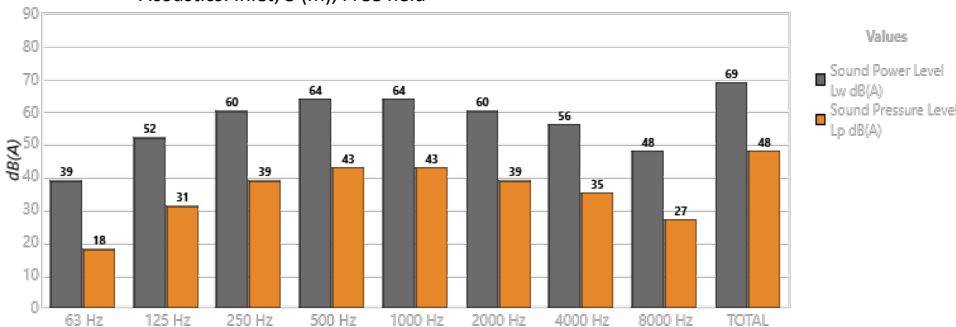
Design Point

Q (m³/h)	
Ps (Pa)	

Service Point (SP)

Q (m³/h)	-
Ps (Pa)	-
Pd (Pa)	-
Pt (Pa)	-

Acoustics: Inlet, 3 (m), Free field



Band	Lw dB(A)	Lp dB(A)
63 Hz	39	18
125 Hz	52	31
250 Hz	60	39
500 Hz	64	43
1000 Hz	64	43
2000 Hz	60	39
4000 Hz	56	35
8000 Hz	48	27
TOTAL	69	48

TECHNICAL CHARACTERISTICS

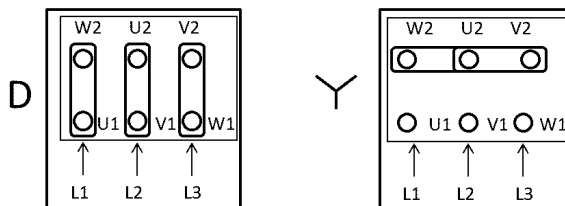
Airflow maximum (m ³ /h)	450
Speed (rpm)	1360
Maximum static pressure (Pa)	156.2
Maximum total pressure (Pa)	156.2

ERP

Remarks	ErP: Exclude. ATEX
---------	--------------------

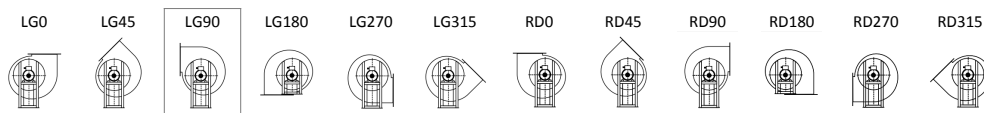
MOTOR DATA

Rated Mechanical Power (kW)	0.25
Hz/phases	50/3
Motor (rpm)	1400
Poles	4P
Max. current (A) 380-415 V Y	0.69
Max. current (A) 220-240 V D	1.2
Motor protection	IP65
Motor frame size	71A



Data can change, please check motor plate

FAN POSITIONS



LG90: Standard orientation

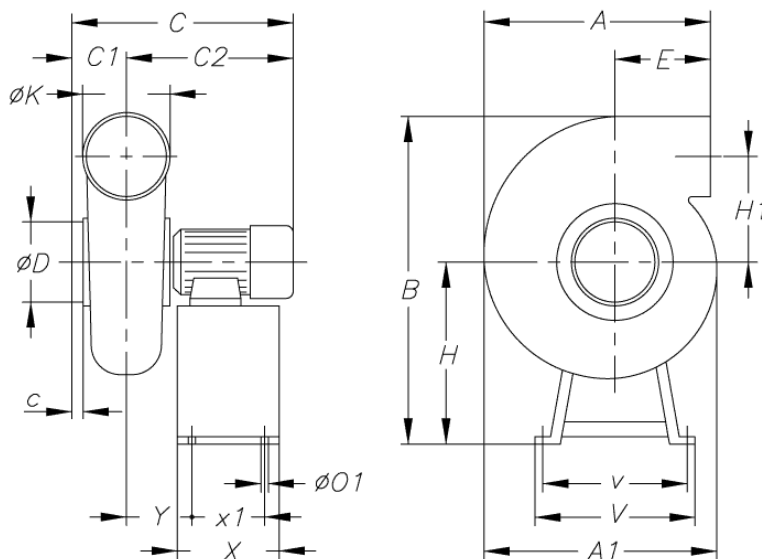
DIMENSIONS

A	A1	B	C	C1	C2	c	øD	E	H	H1	øK	øO1	V
307	335	521	360	100	260	30	125	100	281	177.5	125	8	355

v	X	x1	Y
335	180	160	90

Dimensions without explicitly defined units are shown in millimeters (mm). Dimensions depending on the motor are approximate

Approx. weight (kg)	14
---------------------	----



AVAILABLE ACCESSORIES

General accessories available


 INT-KG-
20/3CA

 VSD3/A-RFT-
1

 VSD1/A-RFM-
0.5

 VSD3/A-RFT-
1-IP66

 VSD1/A-RFM-
0.5-IP66


AET



S


 INT/ATEX
16/3CA

Inlet accessories available

Inlet accessories not available

Outlet accessories available

Outlet accessories not available

It must be checked that the accessory is suitable for the fan model

CPV/ATEX-1020-2T/2G EX DB

Code: 1008010



Centrifugal fans made of corrosion-proof plastic material, with ATEX 2G or 2D certification and Ex db, Ex eb or Ex tb motor

Centrifugal single inlet fans made of ATEX antistatic plastic material. ATEX 2G or 2D certification with flameproof Ex db, increased safety Ex eb or dust ignition proof Ex tb motor to work in explosive gas or dust atmospheres.



Fan:

- Casing made of ATEX antistatic plastic material.
- Forward curved impeller, in ATEX antistatic plastic material.
- Maximum temperature of air to be carried: -25 °C +70 °C.
- Standard marking with flameproof motor (Ex db): II 2G Ex h IIB T4 Gb.
- Standard marking with increased safety motor (Ex eb): II 2G Ex h IIB T3 Gb.
- Standard marking with motor for dust ignition proof (Ex tb): II 2D Ex h IIIC T135 °C Db.

Motor:

- Class F motors with ball bearings, IP55 protection. ATEX certification flameproof Ex db, increased safety Ex eb or dust ignition proof Ex tb.
- Three-phase 230/400 V 50 Hz (up to 4 kW) and 400/690 V 50 Hz (powers greater than 4 kW).
- Working temperature: -20 °C +40 °C.

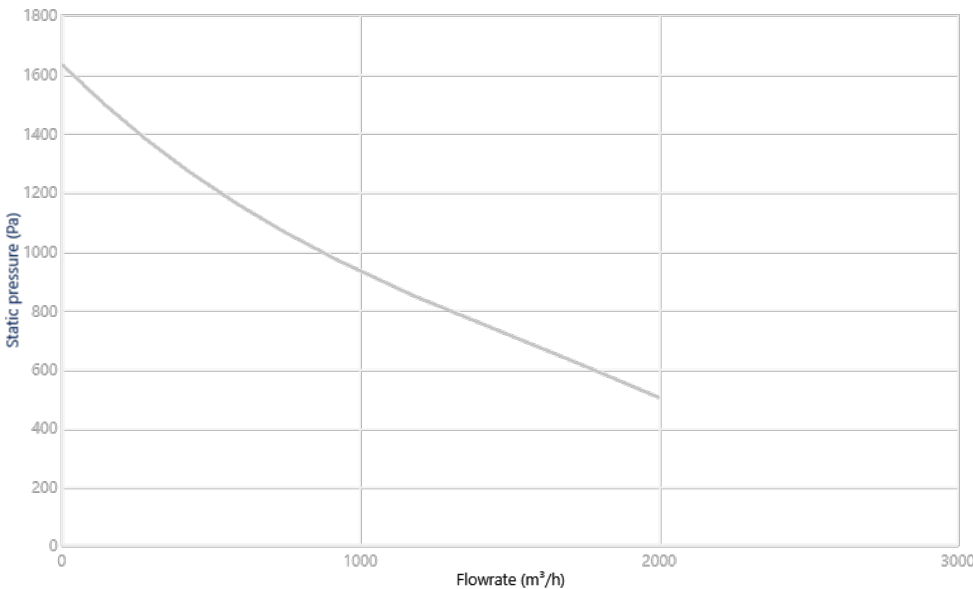
Finish:

- Anti-corrosive in ATEX plastic material.

On request:

- Motors with built-in PTC.
- Special windings for different voltages and frequencies.
- ATEX construction for flammable dust.
- ATEX fan with greater protection than the standard marking.

CHARACTERISTIC CURVE AND ACOUSTICS AT 1.2KG/M³

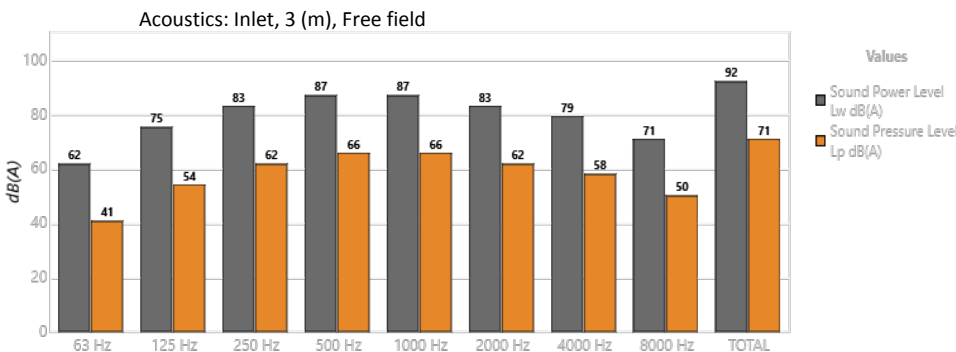


Design Point

Q (m³/h)	
Ps (Pa)	

Service Point (SP)

Q (m³/h)	-
Ps (Pa)	-
Pd (Pa)	-
Pt (Pa)	-



Band	Lw dB(A)	Lp dB(A)
63 Hz	62	41
125 Hz	75	54
250 Hz	83	62
500 Hz	87	66
1000 Hz	87	66
2000 Hz	83	62
4000 Hz	79	58
8000 Hz	71	50
TOTAL	92	71

TECHNICAL CHARACTERISTICS

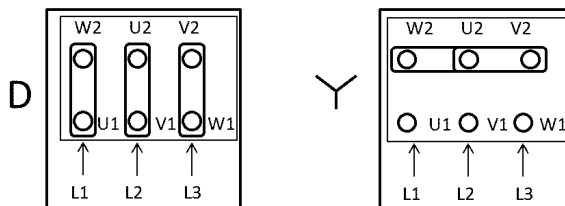
Airflow maximum (m ³ /h)	2000
Speed (rpm)	2800
Maximum static pressure (Pa)	1630
Maximum total pressure (Pa)	1630

ERP

Remarks	ErP: Exclude. ATEX
---------	--------------------

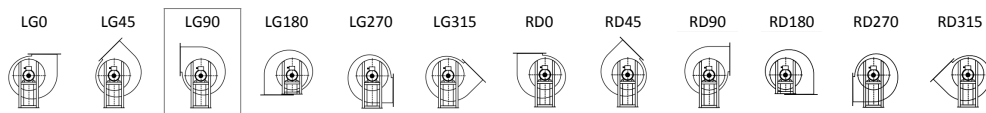
MOTOR DATA

Rated Mechanical Power (kW)	0.75
Hz/phases	50/3
Motor (rpm)	2892
Poles	2P
Max. current (A) 380-415 V Y	1.74
Max. current (A) 220-240 V D	3.03
Motor protection	IP65
Motor frame size	80A



Data can change, please check motor plate

FAN POSITIONS



LG90: Standard orientation

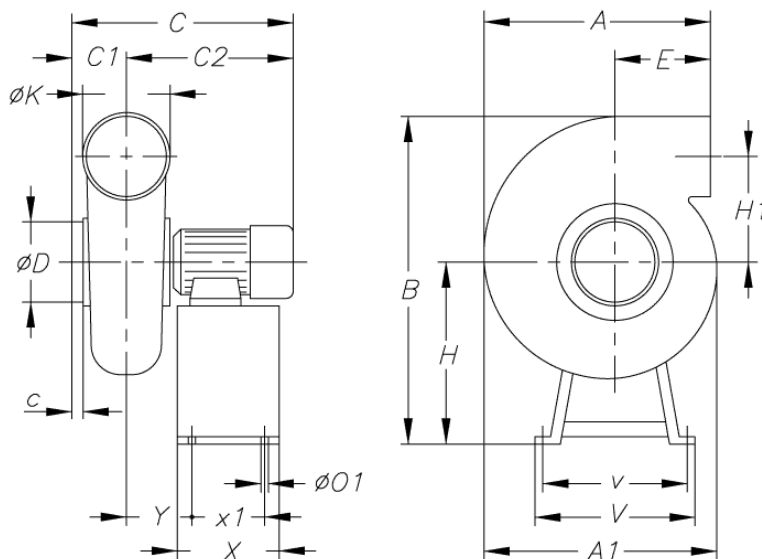
DIMENSIONS

A	A1	B	C	C1	C2	c	øD	E	H	H1	øK	øO1	V
340	397	593	445.5	116	329.5	32	160	100	290	223	160	8	355

v	X	x1	Y
335	180	160	127.5

Dimensions without explicitly defined units are shown in millimeters (mm). Dimensions depending on the motor are approximate

Approx. weight (kg)	19.5
---------------------	------



AVAILABLE ACCESSORIES

General accessories available


 INT-KG-
20/3CA

 VSD3/A-RFT-
1

 VSD1/A-RFM-
1

 VSD3/A-RFT-
1-IP66

 VSD1/A-RFM-
1-IP66


AET



S


 INT/ATEX
16/3CA

Inlet accessories available

Inlet accessories not available

Outlet accessories available

Outlet accessories not available

It must be checked that the accessory is suitable for the fan model

CPV/ATEX-1020-4T/2G EX DB

Code: 1008005



Centrifugal fans made of corrosion-proof plastic material, with ATEX 2G or 2D certification and Ex db, Ex eb or Ex tb motor

Centrifugal single inlet fans made of ATEX antistatic plastic material. ATEX 2G or 2D certification with flameproof Ex db, increased safety Ex eb or dust ignition proof Ex tb motor to work in explosive gas or dust atmospheres.



Fan:

- Casing made of ATEX antistatic plastic material.
- Forward curved impeller, in ATEX antistatic plastic material.
- Maximum temperature of air to be carried: -25 °C +70 °C.
- Standard marking with flameproof motor (Ex db): II 2G Ex h IIB T4 Gb.
- Standard marking with increased safety motor (Ex eb): II 2G Ex h IIB T3 Gb.
- Standard marking with motor for dust ignition proof (Ex tb): II 2D Ex h IIIC T135 °C Db.

Motor:

- Class F motors with ball bearings, IP55 protection. ATEX certification flameproof Ex db, increased safety Ex eb or dust ignition proof Ex tb.
- Three-phase 230/400 V 50 Hz (up to 4 kW) and 400/690 V 50 Hz (powers greater than 4 kW).
- Working temperature: -20 °C +40 °C.

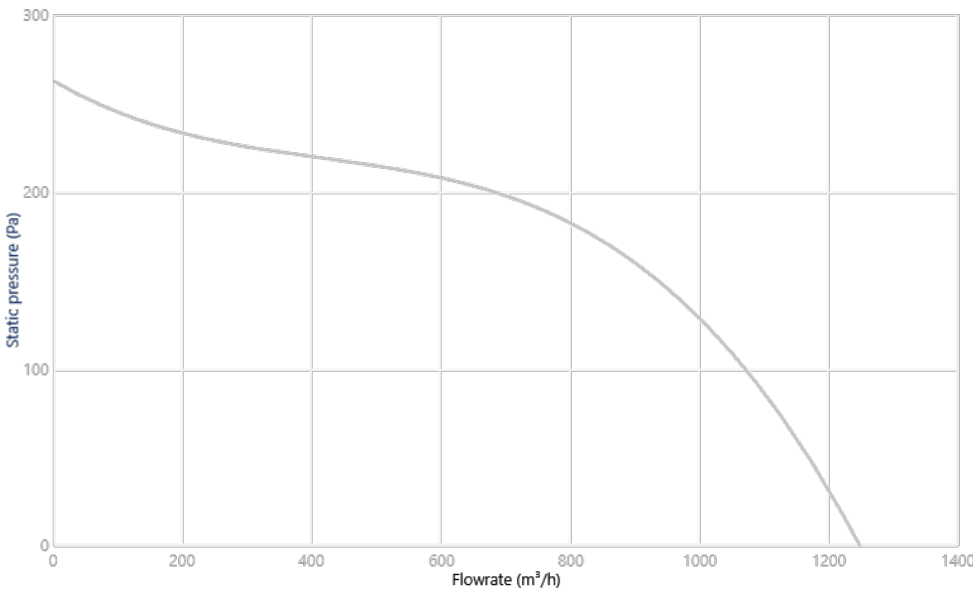
Finish:

- Anti-corrosive in ATEX plastic material.

On request:

- Motors with built-in PTC.
- Special windings for different voltages and frequencies.
- ATEX construction for flammable dust.
- ATEX fan with greater protection than the standard marking.

CHARACTERISTIC CURVE AND ACOUSTICS AT 1.2KG/M³

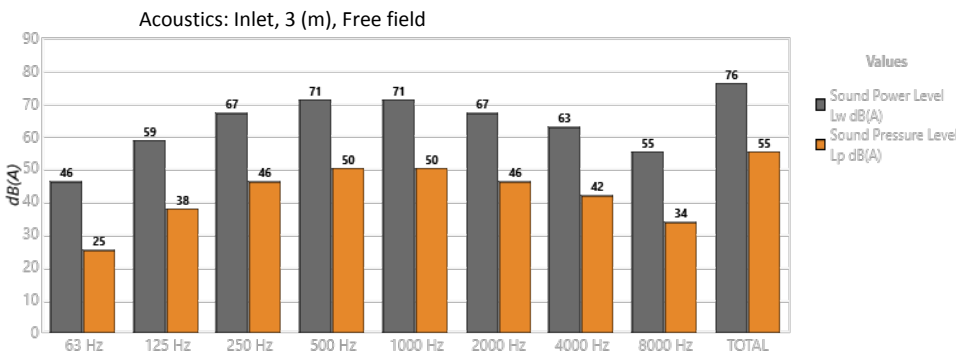


Design Point

Q (m³/h)	
Ps (Pa)	

Service Point (SP)

Q (m³/h)	-
Ps (Pa)	-
Pd (Pa)	-
Pt (Pa)	-



Band	Lw dB(A)	Lp dB(A)
63 Hz	46	25
125 Hz	59	38
250 Hz	67	46
500 Hz	71	50
1000 Hz	71	50
2000 Hz	67	46
4000 Hz	63	42
8000 Hz	55	34
TOTAL	76	55

TECHNICAL CHARACTERISTICS

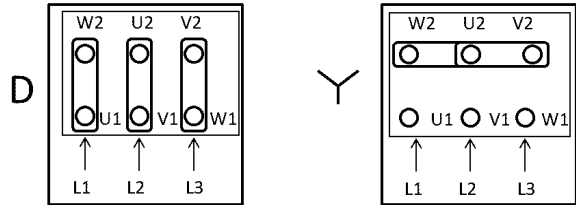
Airflow maximum (m ³ /h)	1250
Speed (rpm)	1360
Maximum static pressure (Pa)	262.6
Maximum total pressure (Pa)	262.6

ERP

Remarks	ErP: Exclude. ATEX
---------	--------------------

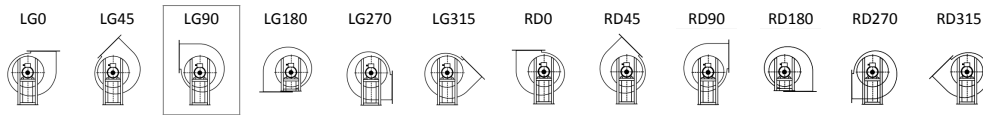
MOTOR DATA

Rated Mechanical Power (kW)	0.25
Hz/phases	50/3
Motor (rpm)	1400
Poles	4P
Max. current (A) 380-415 V Y	0.69
Max. current (A) 220-240 V D	1.2
Motor protection	IP65
Motor frame size	71A



Data can change, please check motor plate

FAN POSITIONS



LG90: Standard orientation

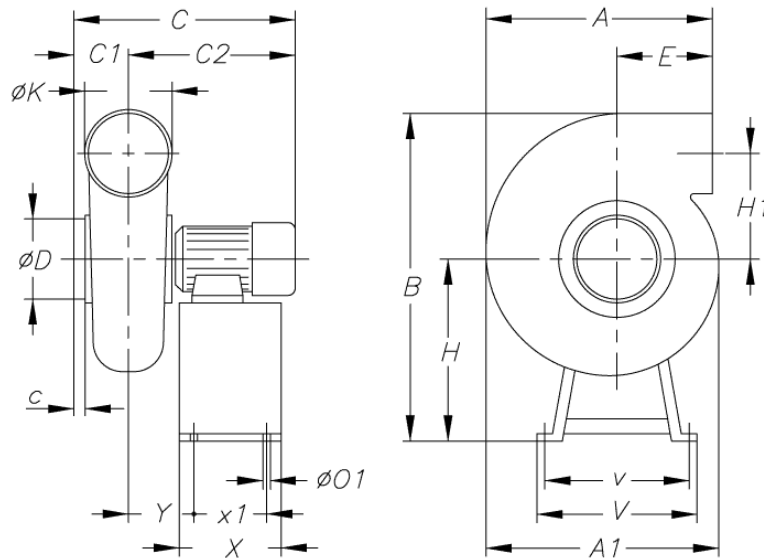
DIMENSIONS

A	A1	B	C	C1	C2	c	øD	E	H	H1	øK	øO1	V
340	397	584	422.5	116	306.5	32	160	100	281	223	160	8	355

v	X	x1	Y
335	180	160	122.5

Dimensions without explicitly defined units are shown in millimeters (mm). Dimensions depending on the motor are approximate

Approx. weight (kg)	19.5
---------------------	------



AVAILABLE ACCESSORIES

General accessories available


 INT-KG-
20/3CA

 VSD3/A-RFT-
1

 VSD1/A-RFM-
0.5

 VSD3/A-RFT-
1-IP66

 VSD1/A-RFM-
0.5-IP66


AET



S


 INT/ATEX
16/3CA

Inlet accessories available

Inlet accessories not available

Outlet accessories available

Outlet accessories not available

It must be checked that the accessory is suitable for the fan model

CPV/ATEX-1020-6T/2G EX DB

Code: 1008006



Centrifugal fans made of corrosion-proof plastic material, with ATEX 2G or 2D certification and Ex db, Ex eb or Ex tb motor

Centrifugal single inlet fans made of ATEX antistatic plastic material. ATEX 2G or 2D certification with flameproof Ex db, increased safety Ex eb or dust ignition proof Ex tb motor to work in explosive gas or dust atmospheres.



Fan:

- Casing made of ATEX antistatic plastic material.
- Forward curved impeller, in ATEX antistatic plastic material.
- Maximum temperature of air to be carried: -25 °C +70 °C.
- Standard marking with flameproof motor (Ex db): II 2G Ex h IIB T4 Gb.
- Standard marking with increased safety motor (Ex eb): II 2G Ex h IIB T3 Gb.
- Standard marking with motor for dust ignition proof (Ex tb): II 2D Ex h IIIC T135 °C Db.

Motor:

- Class F motors with ball bearings, IP55 protection. ATEX certification flameproof Ex db, increased safety Ex eb or dust ignition proof Ex tb.
- Three-phase 230/400 V 50 Hz (up to 4 kW) and 400/690 V 50 Hz (powers greater than 4 kW).
- Working temperature: -20 °C +40 °C.

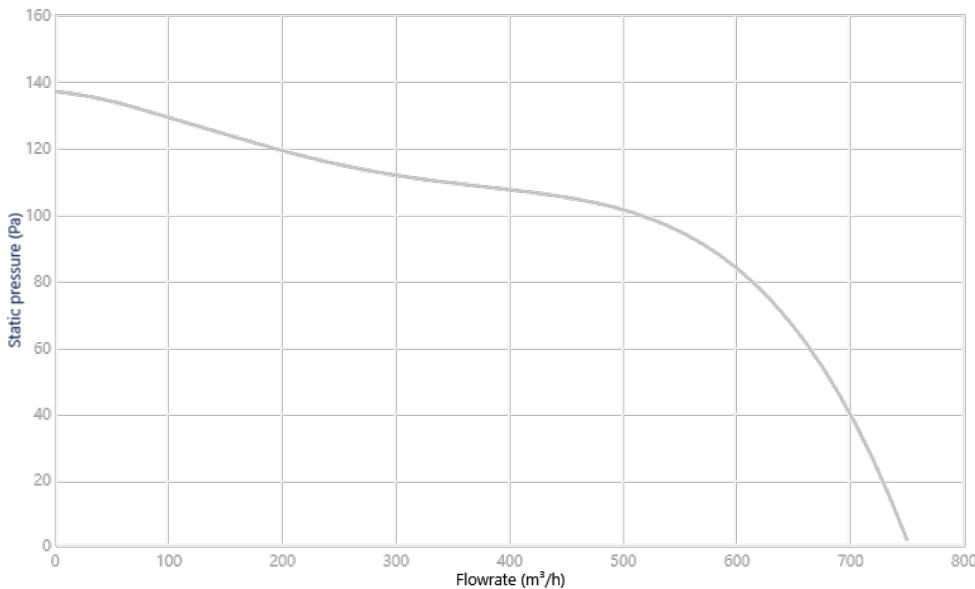
Finish:

- Anti-corrosive in ATEX plastic material.

On request:

- Motors with built-in PTC.
- Special windings for different voltages and frequencies.
- ATEX construction for flammable dust.
- ATEX fan with greater protection than the standard marking.

CHARACTERISTIC CURVE AND ACOUSTICS AT 1.2KG/M³

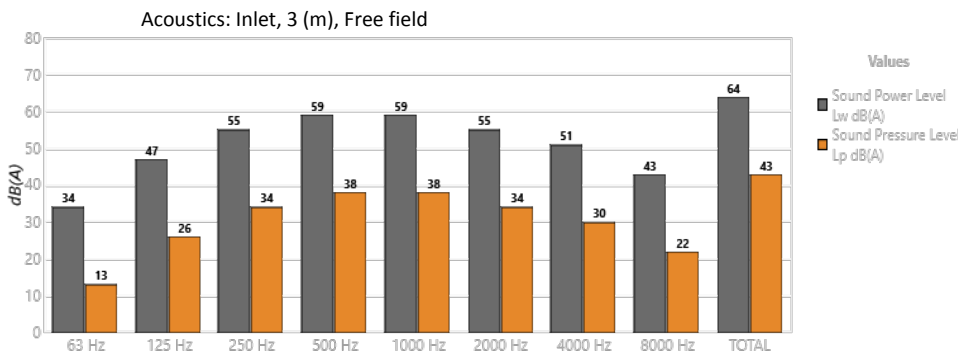


Design Point

Q (m³/h)	
Ps (Pa)	

Service Point (SP)

Q (m³/h)	-
Ps (Pa)	-
Pd (Pa)	-
Pt (Pa)	-



Band	Lw dB(A)	Lp dB(A)
63 Hz	34	13
125 Hz	47	26
250 Hz	55	34
500 Hz	59	38
1000 Hz	59	38
2000 Hz	55	34
4000 Hz	51	30
8000 Hz	43	22
TOTAL	64	43

TECHNICAL CHARACTERISTICS

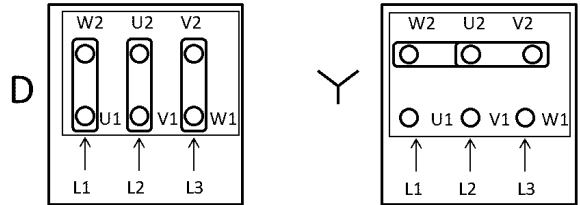
Airflow maximum (m ³ /h)	750
Speed (rpm)	880
Maximum static pressure (Pa)	136.8
Maximum total pressure (Pa)	136.8

ERP

Remarks	ErP: Exclude. ATEX
---------	--------------------

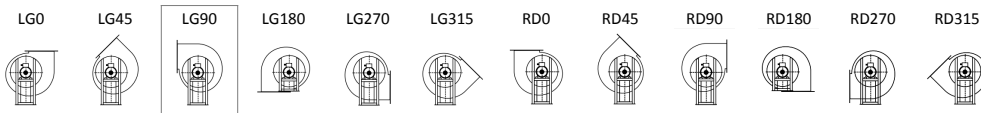
MOTOR DATA

Rated Mechanical Power (kW)	0.25
Hz/phases	50/3
Motor (rpm)	910
Poles	6P
Max. current (A) 380-415 V Y	1.4
Max. current (A) 220-240 V D	2.42
Motor protection	IP55
Motor frame size	71



Data can change, please check motor plate

FAN POSITIONS



LG90: Standard orientation

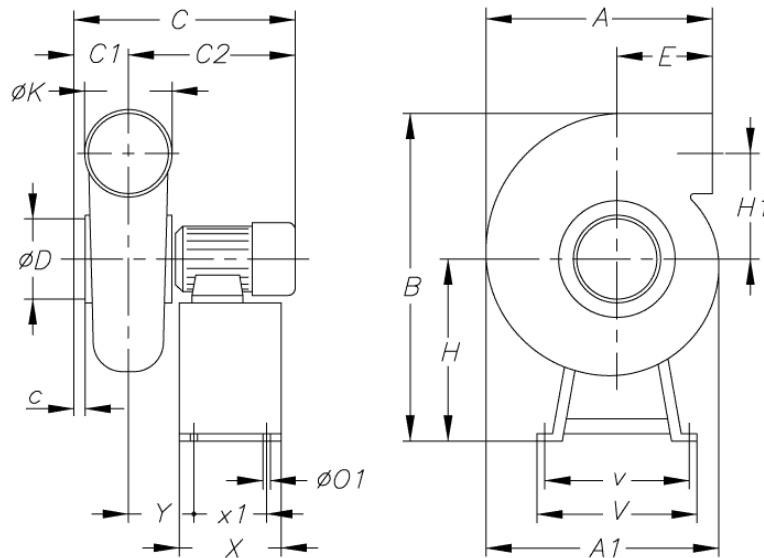
DIMENSIONS

A	A1	B	C	C1	C2	c	øD	E	H	H1	øK	øO1	V
340	397	584	422.5	116	306.5	32	160	100	281	223	160	8	355

v	X	x1	Y
335	180	160	122.5

Dimensions without explicitly defined units are shown in millimeters (mm). Dimensions depending on the motor are approximate

Approx. weight (kg)	19.5
---------------------	------



AVAILABLE ACCESSORIES

General accessories available


 INT-KG-
20/3CA

 VSD3/A-RFT-
1

 VSD1/A-RFM-
0.5

 VSD3/A-RFT-
1-IP66

 VSD1/A-RFM-
0.5-IP66


AET



S


 INT/ATEX
16/3CA

Inlet accessories available

Inlet accessories not available

Outlet accessories available

Outlet accessories not available

It must be checked that the accessory is suitable for the fan model

CPV/ATEX-1325-2T/2G EX DB

Code: 1008011



Centrifugal fans made of corrosion-proof plastic material, with ATEX 2G or 2D certification and Ex db, Ex eb or Ex tb motor

Centrifugal single inlet fans made of ATEX antistatic plastic material. ATEX 2G or 2D certification with flameproof Ex db, increased safety Ex eb or dust ignition proof Ex tb motor to work in explosive gas or dust atmospheres.



Fan:

- Casing made of ATEX antistatic plastic material.
- Forward curved impeller, in ATEX antistatic plastic material.
- Maximum temperature of air to be carried: -25 °C +70 °C.
- Standard marking with flameproof motor (Ex db): II 2G Ex h IIB T4 Gb.
- Standard marking with increased safety motor (Ex eb): II 2G Ex h IIB T3 Gb.
- Standard marking with motor for dust ignition proof (Ex tb): II 2D Ex h IIIC T135 °C Db.

Motor:

- Class F motors with ball bearings, IP55 protection. ATEX certification flameproof Ex db, increased safety Ex eb or dust ignition proof Ex tb.
- Three-phase 230/400 V 50 Hz (up to 4 kW) and 400/690 V 50 Hz (powers greater than 4 kW).
- Working temperature: -20 °C +40 °C.

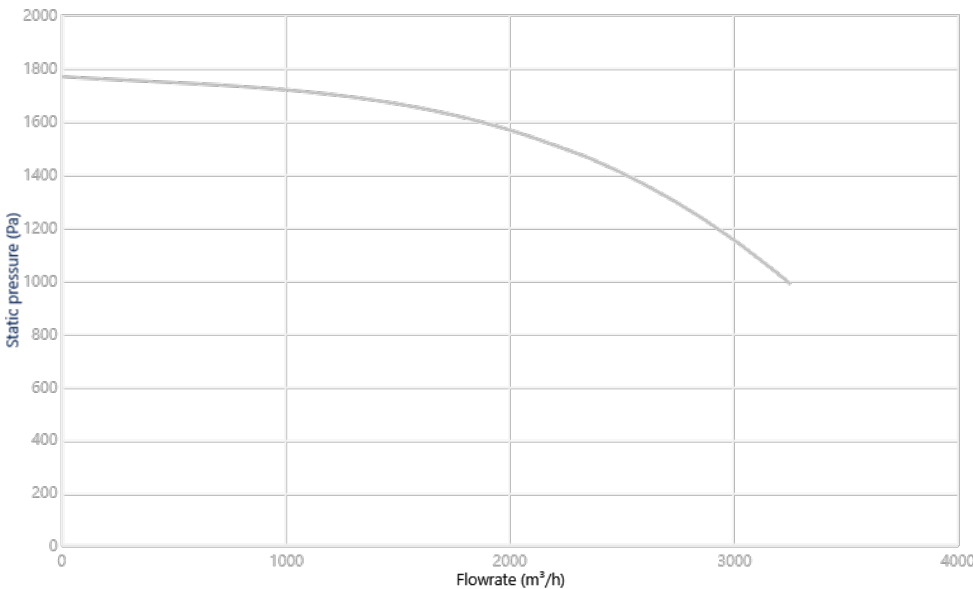
Finish:

- Anti-corrosive in ATEX plastic material.

On request:

- Motors with built-in PTC.
- Special windings for different voltages and frequencies.
- ATEX construction for flammable dust.
- ATEX fan with greater protection than the standard marking.

CHARACTERISTIC CURVE AND ACOUSTICS AT 1.2KG/M³



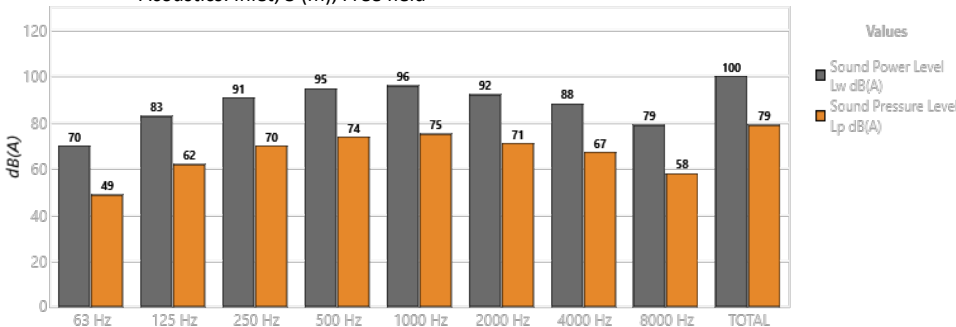
Design Point

Q (m³/h)	
Ps (Pa)	

Service Point (SP)

Q (m³/h)	-
Ps (Pa)	-
Pd (Pa)	-
Pt (Pa)	-

Acoustics: Inlet, 3 (m), Free field



Band	Lw dB(A)	Lp dB(A)
63 Hz	70	49
125 Hz	83	62
250 Hz	91	70
500 Hz	95	74
1000 Hz	96	75
2000 Hz	92	71
4000 Hz	88	67
8000 Hz	79	58
TOTAL	100	79

TECHNICAL CHARACTERISTICS

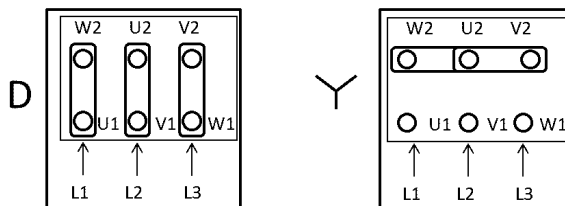
Airflow maximum (m ³ /h)	3250
Speed (rpm)	2850
Maximum static pressure (Pa)	1766
Maximum total pressure (Pa)	1771

ERP

Remarks	ErP: Exclude. ATEX
---------	--------------------

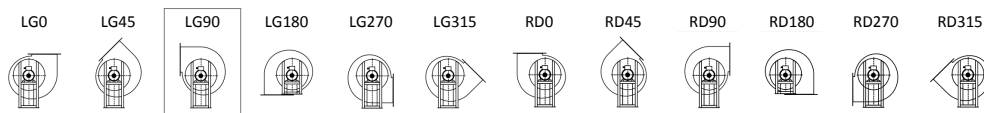
MOTOR DATA

Rated Mechanical Power (kW)	2.2
Hz/phases	50/3
Motor (rpm)	2859
Poles	2P
Max. current (A) 380-415 V Y	4.51
Max. current (A) 220-240 V D	7.84
Motor protection	IP65
Motor frame size	90L



Data can change, please check motor plate

FAN POSITIONS



LG90: Standard orientation

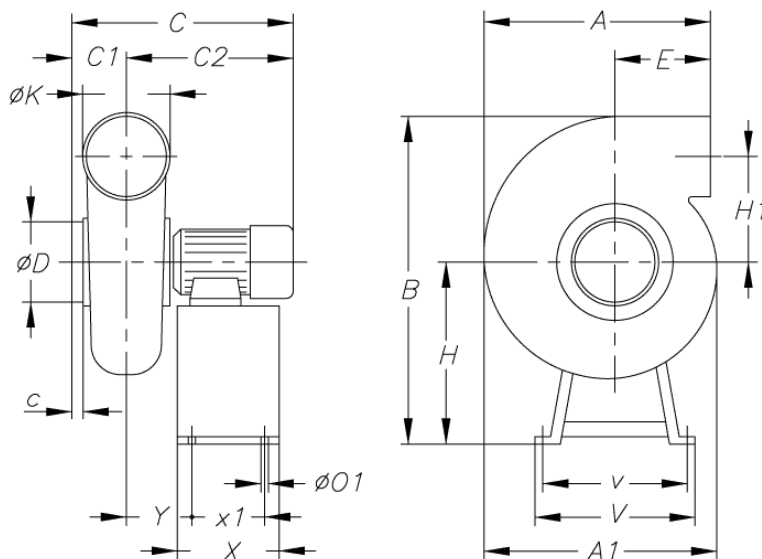
DIMENSIONS

A	A1	B	C	C1	C2	c	øD	E	H	H1	øK	øO1	V
413	505	735	494	130	364	35	200	103	370	265	200	8	400

v	X	x1	Y
380	180	160	125

Dimensions without explicitly defined units are shown in millimeters (mm). Dimensions depending on the motor are approximate

Approx. weight (kg)	27
---------------------	----



AVAILABLE ACCESSORIES

General accessories available



INT-KG-
20/3CA



VSD3/A-RFT-
3



VSD1/A-RFM-
3



VSD3/A-RFT-
3-IP66



VSD1/A-RFM-
3-IP66



AET



S



INT/ATEX
16/3CA

Inlet accessories available

Inlet accessories not available

Outlet accessories available

Outlet accessories not available

It must be checked that the accessory is suitable for the fan model

CPV/ATEX-1325-4T/2G EX DB

Code: 1008007



Centrifugal fans made of corrosion-proof plastic material, with ATEX 2G or 2D certification and Ex db, Ex eb or Ex tb motor

Centrifugal single inlet fans made of ATEX antistatic plastic material. ATEX 2G or 2D certification with flameproof Ex db, increased safety Ex eb or dust ignition proof Ex tb motor to work in explosive gas or dust atmospheres.



Fan:

- Casing made of ATEX antistatic plastic material.
- Forward curved impeller, in ATEX antistatic plastic material.
- Maximum temperature of air to be carried: -25 °C +70 °C.
- Standard marking with flameproof motor (Ex db): II 2G Ex h IIB T4 Gb.
- Standard marking with increased safety motor (Ex eb): II 2G Ex h IIB T3 Gb.
- Standard marking with motor for dust ignition proof (Ex tb): II 2D Ex h IIIC T135 °C Db.

Motor:

- Class F motors with ball bearings, IP55 protection. ATEX certification flameproof Ex db, increased safety Ex eb or dust ignition proof Ex tb.
- Three-phase 230/400 V 50 Hz (up to 4 kW) and 400/690 V 50 Hz (powers greater than 4 kW).
- Working temperature: -20 °C +40 °C.

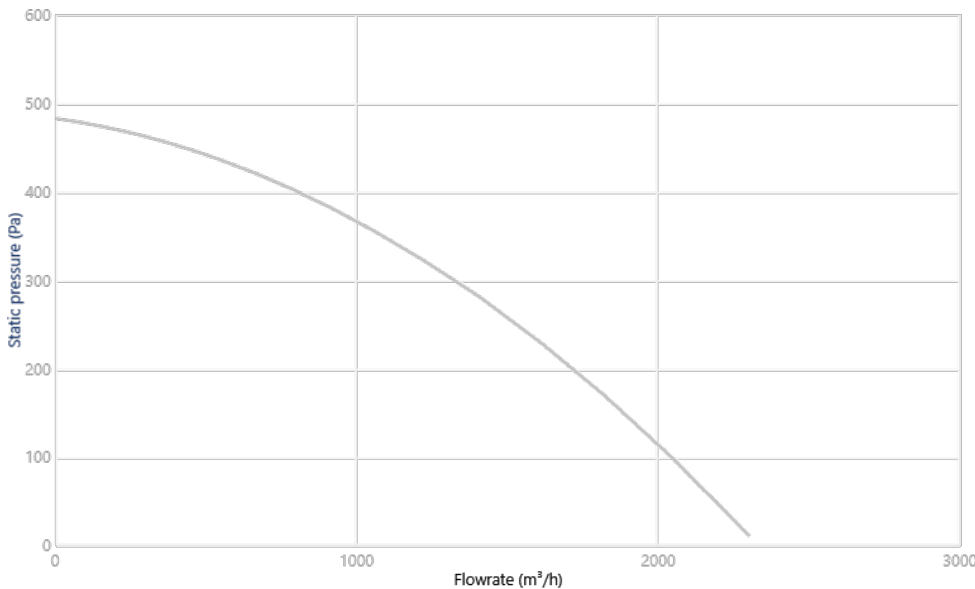
Finish:

- Anti-corrosive in ATEX plastic material.

On request:

- Motors with built-in PTC.
- Special windings for different voltages and frequencies.
- ATEX construction for flammable dust.
- ATEX fan with greater protection than the standard marking.

CHARACTERISTIC CURVE AND ACOUSTICS AT 1.2KG/M³

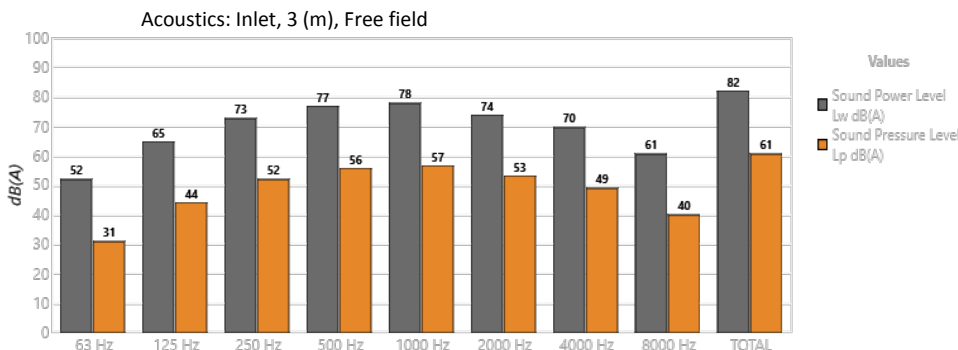


Design Point

Q (m³/h)	
Ps (Pa)	

Service Point (SP)

Q (m³/h)	-
Ps (Pa)	-
Pd (Pa)	-
Pt (Pa)	-



Band	Lw dB(A)	Lp dB(A)
63 Hz	52	31
125 Hz	65	44
250 Hz	73	52
500 Hz	77	56
1000 Hz	78	57
2000 Hz	74	53
4000 Hz	70	49
8000 Hz	61	40
TOTAL	82	61

TECHNICAL CHARACTERISTICS

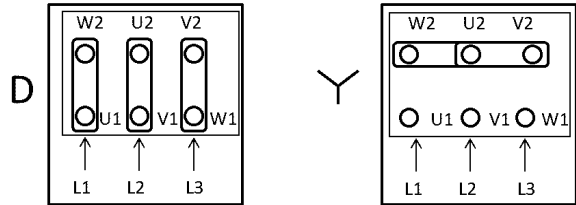
Airflow maximum (m ³ /h)	2300
Speed (rpm)	1360
Maximum static pressure (Pa)	482.5
Maximum total pressure (Pa)	482.5

ERP

Remarks	ErP: Exclude. ATEX
---------	--------------------

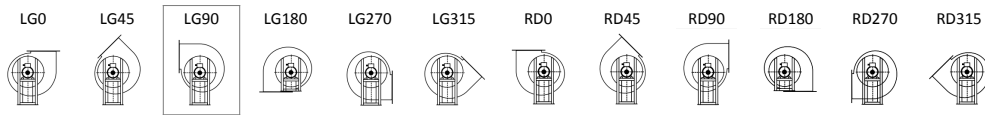
MOTOR DATA

Rated Mechanical Power (kW)	0.37
Hz/phases	50/3
Motor (rpm)	1370
Poles	4P
Max. current (A) 380-415 V Y	1.5
Max. current (A) 220-240 V D	2.6
Motor protection	IP55
Motor frame size	71



Data can change, please check motor plate

FAN POSITIONS



LG90: Standard orientation

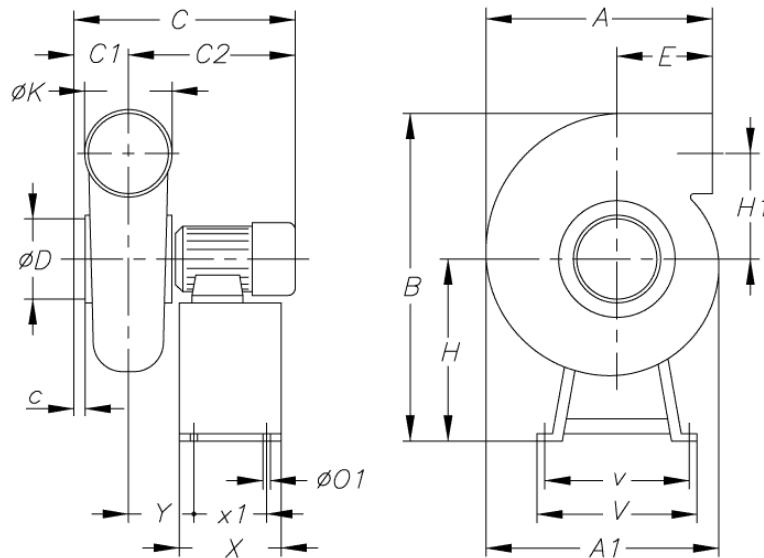
DIMENSIONS

A	A1	B	C	C1	C2	c	øD	E	H	H1	øK	øO1	V
413	505	716	432.5	130	302.5	35	200	103	351	265	200	8	400

v	X	x1	Y
380	180	160	113.5

Dimensions without explicitly defined units are shown in millimeters (mm). Dimensions depending on the motor are approximate

Approx. weight (kg)	27
---------------------	----



AVAILABLE ACCESSORIES

General accessories available


 INT-KG-
20/3CA

 VSD3/A-RFT-
1

 VSD1/A-RFM-
0.5

 VSD3/A-RFT-
1-IP66

 VSD1/A-RFM-
0.5-IP66


AET



S


 INT/ATEX
16/3CA

Inlet accessories available

Inlet accessories not available

Outlet accessories available

Outlet accessories not available

It must be checked that the accessory is suitable for the fan model

CPV/ATEX-1325-6T/2G EX DB

Code: 1008008



Centrifugal fans made of corrosion-proof plastic material, with ATEX 2G or 2D certification and Ex db, Ex eb or Ex tb motor

Centrifugal single inlet fans made of ATEX antistatic plastic material. ATEX 2G or 2D certification with flameproof Ex db, increased safety Ex eb or dust ignition proof Ex tb motor to work in explosive gas or dust atmospheres.



Fan:

- Casing made of ATEX antistatic plastic material.
- Forward curved impeller, in ATEX antistatic plastic material.
- Maximum temperature of air to be carried: -25 °C +70 °C.
- Standard marking with flameproof motor (Ex db): II 2G Ex h IIB T4 Gb.
- Standard marking with increased safety motor (Ex eb): II 2G Ex h IIB T3 Gb.
- Standard marking with motor for dust ignition proof (Ex tb): II 2D Ex h IIIC T135 °C Db.

Motor:

- Class F motors with ball bearings, IP55 protection. ATEX certification flameproof Ex db, increased safety Ex eb or dust ignition proof Ex tb.
- Three-phase 230/400 V 50 Hz (up to 4 kW) and 400/690 V 50 Hz (powers greater than 4 kW).
- Working temperature: -20 °C +40 °C.

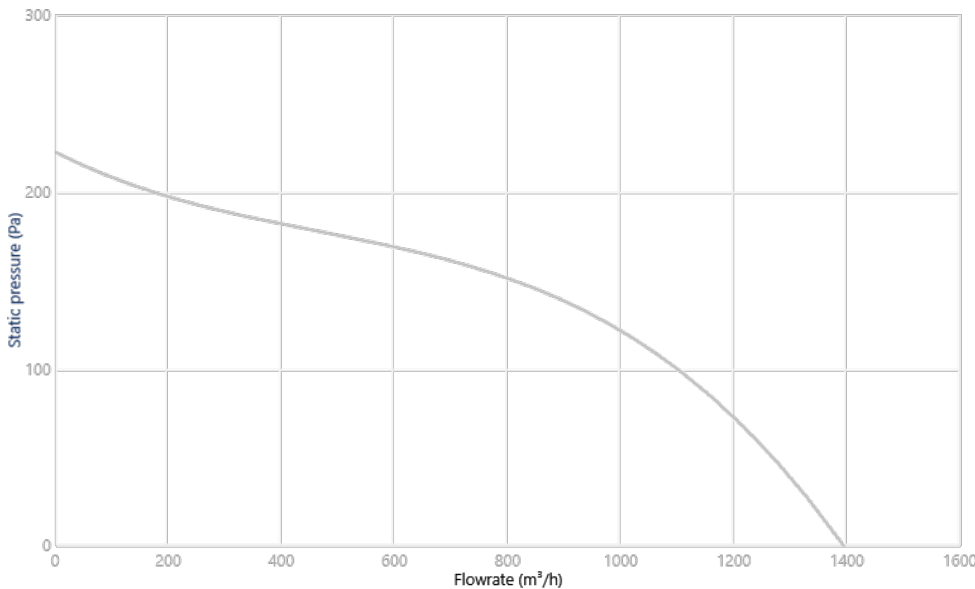
Finish:

- Anti-corrosive in ATEX plastic material.

On request:

- Motors with built-in PTC.
- Special windings for different voltages and frequencies.
- ATEX construction for flammable dust.
- ATEX fan with greater protection than the standard marking.

CHARACTERISTIC CURVE AND ACOUSTICS AT 1.2KG/M³

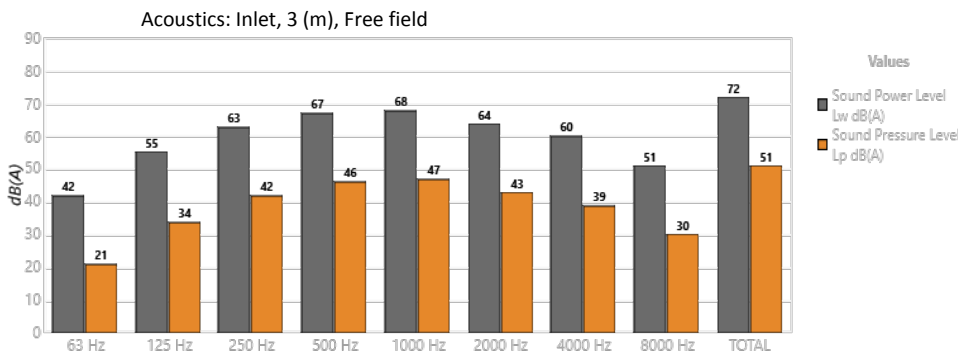


Design Point

Q (m³/h)	
Ps (Pa)	

Service Point (SP)

Q (m³/h)	-
Ps (Pa)	-
Pd (Pa)	-
Pt (Pa)	-



Band	Lw dB(A)	Lp dB(A)
63 Hz	42	21
125 Hz	55	34
250 Hz	63	42
500 Hz	67	46
1000 Hz	68	47
2000 Hz	64	43
4000 Hz	60	39
8000 Hz	51	30
TOTAL	72	51

TECHNICAL CHARACTERISTICS

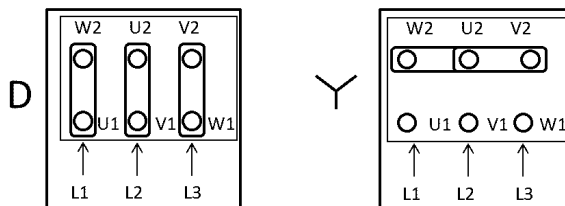
Airflow maximum (m ³ /h)	1400
Speed (rpm)	880
Maximum static pressure (Pa)	222.3
Maximum total pressure (Pa)	222.3

ERP

Remarks	ErP: Exclude. ATEX
---------	--------------------

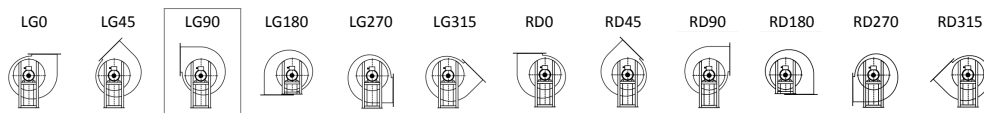
MOTOR DATA

Rated Mechanical Power (kW)	0.25
Hz/phases	50/3
Motor (rpm)	910
Poles	6P
Max. current (A) 380-415 V Y	1.4
Max. current (A) 220-240 V D	2.42
Motor protection	IP55
Motor frame size	71



Data can change, please check motor plate

FAN POSITIONS



LG90: Standard orientation

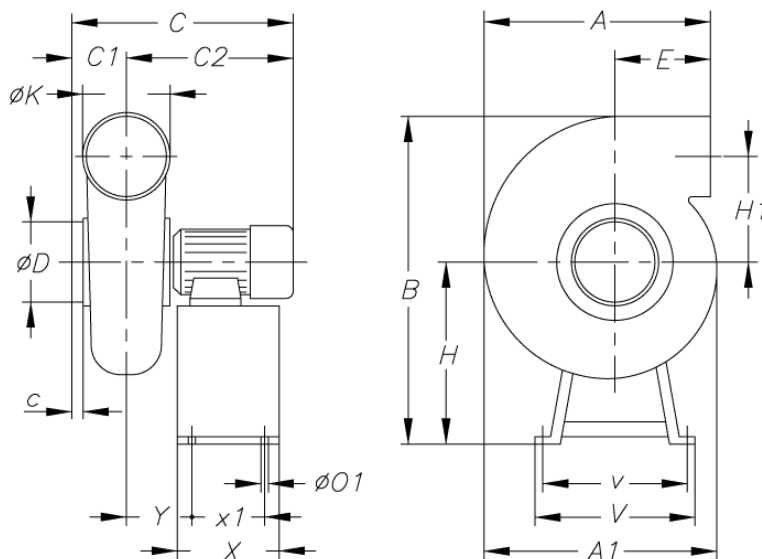
DIMENSIONS

A	A1	B	C	C1	C2	c	øD	E	H	H1	øK	øO1	V
413	505	716	432.5	130	302.5	35	200	103	351	265	200	8	400

v	X	x1	Y
380	180	160	113.5

Dimensions without explicitly defined units are shown in millimeters (mm). Dimensions depending on the motor are approximate

Approx. weight (kg)	27
---------------------	----



AVAILABLE ACCESSORIES

General accessories available


 INT-KG-
20/3CA

 VSD3/A-RFT-
1

 VSD1/A-RFM-
0.5

 VSD3/A-RFT-
1-IP66

 VSD1/A-RFM-
0.5-IP66


AET



S


 INT/ATEX
16/3CA

Inlet accessories available

Inlet accessories not available

Outlet accessories available

Outlet accessories not available

It must be checked that the accessory is suitable for the fan model

CPV/ATEX-1630-4T/2G EX DB

Code: 1008012



Centrifugal fans made of corrosion-proof plastic material, with ATEX 2G or 2D certification and Ex db, Ex eb or Ex tb motor

Centrifugal single inlet fans made of ATEX antistatic plastic material. ATEX 2G or 2D certification with flameproof Ex db, increased safety Ex eb or dust ignition proof Ex tb motor to work in explosive gas or dust atmospheres.



Fan:

- Casing made of ATEX antistatic plastic material.
- Forward curved impeller, in ATEX antistatic plastic material.
- Maximum temperature of air to be carried: -25 °C +70 °C.
- Standard marking with flameproof motor (Ex db): II 2G Ex h IIB T4 Gb.
- Standard marking with increased safety motor (Ex eb): II 2G Ex h IIB T3 Gb.
- Standard marking with motor for dust ignition proof (Ex tb): II 2D Ex h IIIC T135 °C Db.

Motor:

- Class F motors with ball bearings, IP55 protection. ATEX certification flameproof Ex db, increased safety Ex eb or dust ignition proof Ex tb.
- Three-phase 230/400 V 50 Hz (up to 4 kW) and 400/690 V 50 Hz (powers greater than 4 kW).
- Working temperature: -20 °C +40 °C.

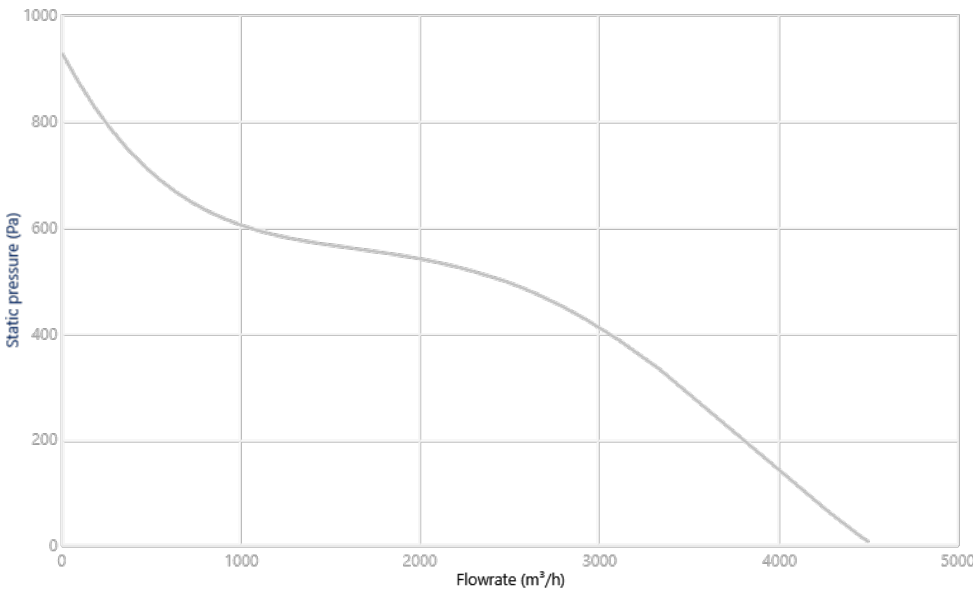
Finish:

- Anti-corrosive in ATEX plastic material.

On request:

- Motors with built-in PTC.
- Special windings for different voltages and frequencies.
- ATEX construction for flammable dust.
- ATEX fan with greater protection than the standard marking.

CHARACTERISTIC CURVE AND ACOUSTICS AT 1.2KG/M³



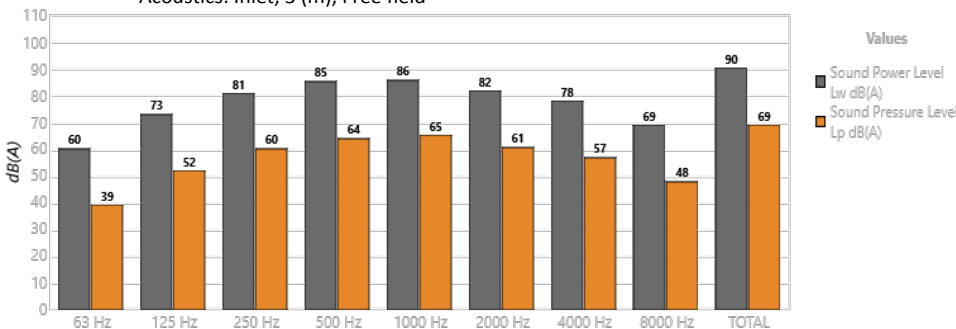
Design Point

Q (m³/h)	
Ps (Pa)	

Service Point (SP)

Q (m³/h)	-
Ps (Pa)	-
Pd (Pa)	-
Pt (Pa)	-

Acoustics: Inlet, 3 (m), Free field



Band	Lw dB(A)	Lp dB(A)
63 Hz	60	39
125 Hz	73	52
250 Hz	81	60
500 Hz	85	64
1000 Hz	86	65
2000 Hz	82	61
4000 Hz	78	57
8000 Hz	69	48
TOTAL	90	69

TECHNICAL CHARACTERISTICS

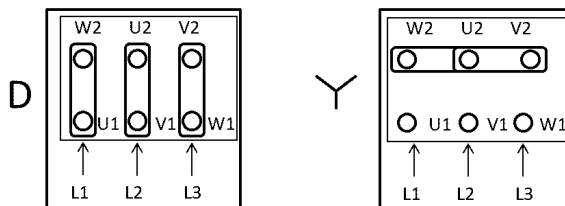
Airflow maximum (m ³ /h)	4500
Speed (rpm)	1420
Maximum static pressure (Pa)	927.1
Maximum total pressure (Pa)	927.1

ERP

Remarks	ErP: Exclude. ATEX
---------	--------------------

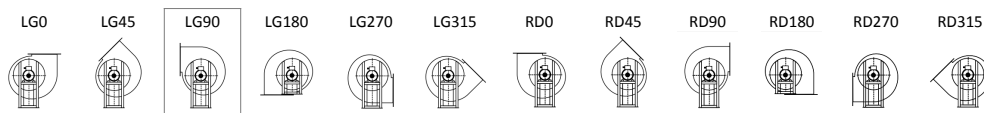
MOTOR DATA

Rated Mechanical Power (kW)	1.5
Hz/phases	50/3
Motor (rpm)	1400
Poles	4P
Max. current (A) 380-415 V Y	4
Max. current (A) 220-240 V D	6.93
Motor protection	IP55
Motor frame size	90L



Data can change, please check motor plate

FAN POSITIONS



LG90: Standard orientation

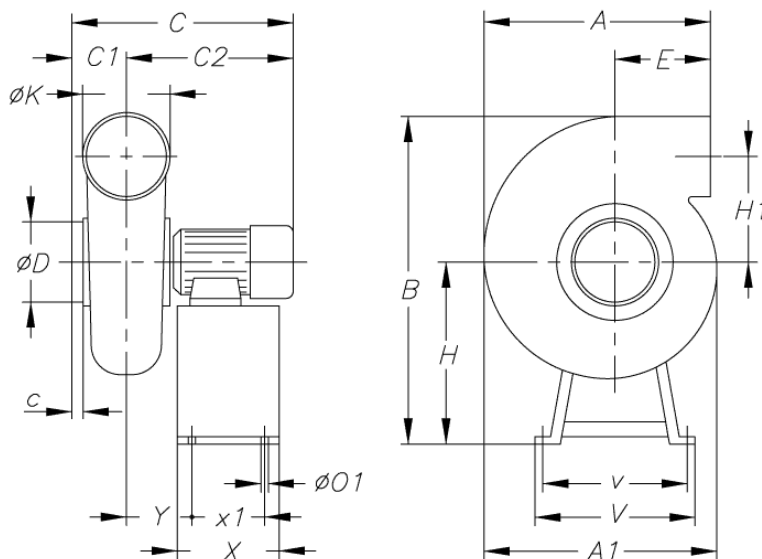
DIMENSIONS

A	A1	B	C	C1	C2	c	øD	E	H	H1	øK	øO1	V
480	602	890	536.5	145	391.5	35	250	117	440	323	250	8	450

v	X	x1	Y
430	240	220	142.5

Dimensions without explicitly defined units are shown in millimeters (mm). Dimensions depending on the motor are approximate

Approx. weight (kg)	34.5
---------------------	------



AVAILABLE ACCESSORIES

General accessories available


 INT-KG-
20/3CA

 VSD3/A-RFT-
2

 VSD1/A-RFM-
2

 VSD3/A-RFT-
2-IP66

 VSD1/A-RFM-
2-IP66


AET



S


 INT/ATEX
16/3CA

Inlet accessories available

Inlet accessories not available

Outlet accessories available

Outlet accessories not available

It must be checked that the accessory is suitable for the fan model

CPV/ATEX-1630-6T/2G EX DB

Code: 1008009



Centrifugal fans made of corrosion-proof plastic material, with ATEX 2G or 2D certification and Ex db, Ex eb or Ex tb motor

Centrifugal single inlet fans made of ATEX antistatic plastic material. ATEX 2G or 2D certification with flameproof Ex db, increased safety Ex eb or dust ignition proof Ex tb motor to work in explosive gas or dust atmospheres.



Fan:

- Casing made of ATEX antistatic plastic material.
- Forward curved impeller, in ATEX antistatic plastic material.
- Maximum temperature of air to be carried: -25 °C +70 °C.
- Standard marking with flameproof motor (Ex db): II 2G Ex h IIB T4 Gb.
- Standard marking with increased safety motor (Ex eb): II 2G Ex h IIB T3 Gb.
- Standard marking with motor for dust ignition proof (Ex tb): II 2D Ex h IIIC T135 °C Db.

Motor:

- Class F motors with ball bearings, IP55 protection. ATEX certification flameproof Ex db, increased safety Ex eb or dust ignition proof Ex tb.
- Three-phase 230/400 V 50 Hz (up to 4 kW) and 400/690 V 50 Hz (powers greater than 4 kW).
- Working temperature: -20 °C +40 °C.

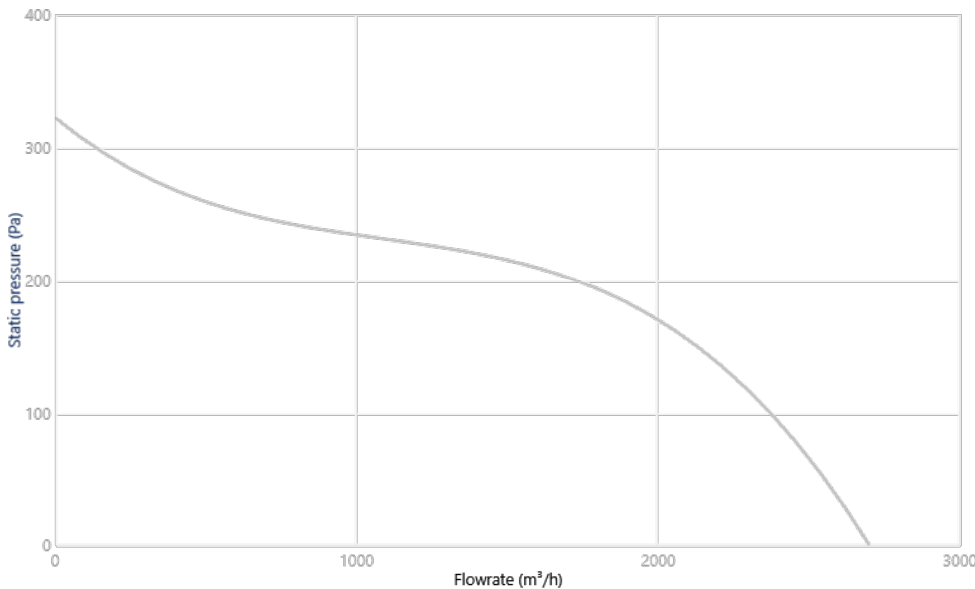
Finish:

- Anti-corrosive in ATEX plastic material.

On request:

- Motors with built-in PTC.
- Special windings for different voltages and frequencies.
- ATEX construction for flammable dust.
- ATEX fan with greater protection than the standard marking.

CHARACTERISTIC CURVE AND ACOUSTICS AT 1.2KG/M³

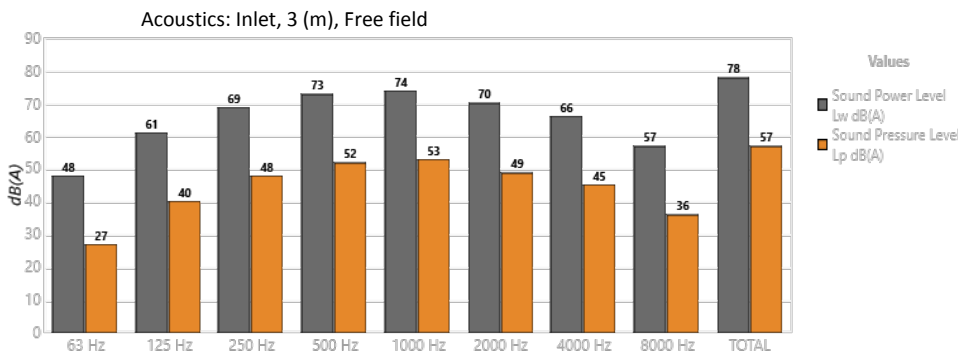


Design Point

Q (m³/h)	
Ps (Pa)	

Service Point (SP)

Q (m³/h)	-
Ps (Pa)	-
Pd (Pa)	-
Pt (Pa)	-



Band	Lw dB(A)	Lp dB(A)
63 Hz	48	27
125 Hz	61	40
250 Hz	69	48
500 Hz	73	52
1000 Hz	74	53
2000 Hz	70	49
4000 Hz	66	45
8000 Hz	57	36
TOTAL	78	57

TECHNICAL CHARACTERISTICS

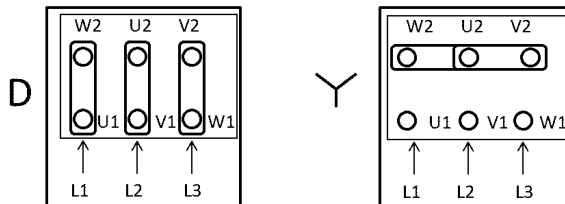
Airflow maximum (m³/h)	2700
Speed (rpm)	910
Maximum static pressure (Pa)	322.3
Maximum total pressure (Pa)	322.3

ERP

Remarks	ErP: Exclude. ATEX
---------	--------------------

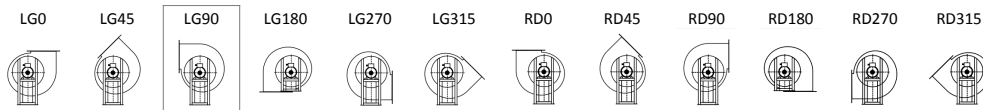
MOTOR DATA

Rated Mechanical Power (kW)	0.55
Hz/phases	50/3
Motor (rpm)	930
Poles	6P
Max. current (A) 380-415 V Y	2
Max. current (A) 220-240 V D	3.46
Motor protection	IP55
Motor frame size	80



Data can change, please check motor plate

FAN POSITIONS



LG90: Standard orientation

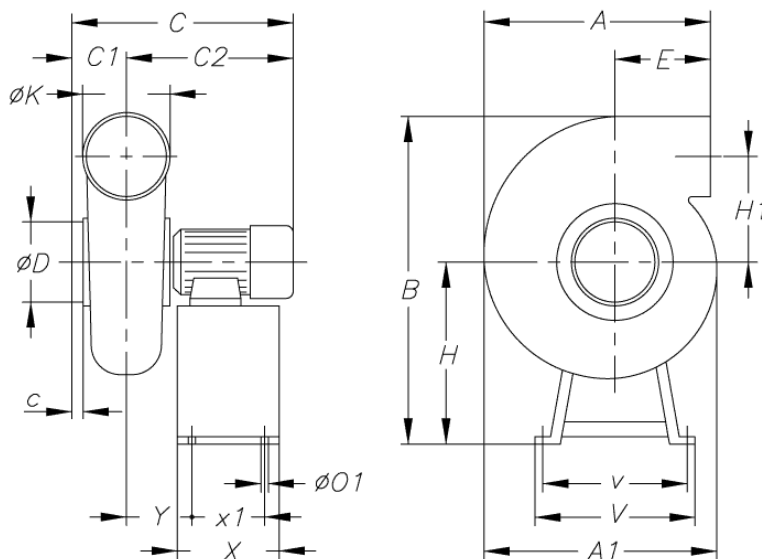
DIMENSIONS

A	A1	B	C	C1	C2	c	øD	E	H	H1	øK	øO1	V
480	602	880	503	145	358	35	250	117	430	323	250	8	450

v	X	x1	Y
430	240	220	138

Dimensions without explicitly defined units are shown in millimeters (mm). Dimensions depending on the motor are approximate

Approx. weight (kg)	34.5
---------------------	------



AVAILABLE ACCESSORIES

General accessories available


 INT-KG-
20/3CA

 VSD3/A-RFT-
1

 VSD1/A-RFM-
1

 VSD3/A-RFT-
1-IP66

 VSD1/A-RFM-
1-IP66


AET



S


 INT/ATEX
16/3CA

Inlet accessories available

Inlet accessories not available

Outlet accessories available

Outlet accessories not available

It must be checked that the accessory is suitable for the fan model

CPV/ATEX-815-2T/2G EX EB

Code: 1008044



Centrifugal fans made of corrosion-proof plastic material, with ATEX 2G or 2D certification and Ex db, Ex eb or Ex tb motor

Centrifugal single inlet fans made of ATEX antistatic plastic material. ATEX 2G or 2D certification with flameproof Ex db, increased safety Ex eb or dust ignition proof Ex tb motor to work in explosive gas or dust atmospheres.



Fan:

- Casing made of ATEX antistatic plastic material.
- Forward curved impeller, in ATEX antistatic plastic material.
- Maximum temperature of air to be carried: -25 °C +70 °C.
- Standard marking with flameproof motor (Ex db): II 2G Ex h IIB T4 Gb.
- Standard marking with increased safety motor (Ex eb): II 2G Ex h IIB T3 Gb.
- Standard marking with motor for dust ignition proof (Ex tb): II 2D Ex h IIIC T135 °C Db.

Motor:

- Class F motors with ball bearings, IP55 protection. ATEX certification flameproof Ex db, increased safety Ex eb or dust ignition proof Ex tb.
- Three-phase 230/400 V 50 Hz (up to 4 kW) and 400/690 V 50 Hz (powers greater than 4 kW).
- Working temperature: -20 °C +40 °C.

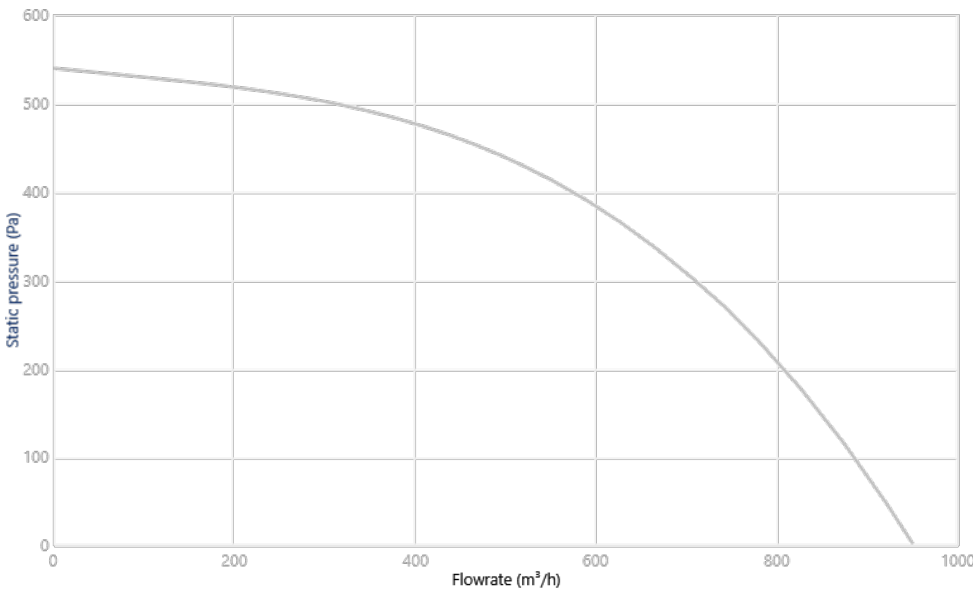
Finish:

- Anti-corrosive in ATEX plastic material.

On request:

- Motors with built-in PTC.
- Special windings for different voltages and frequencies.
- ATEX construction for flammable dust.
- ATEX fan with greater protection than the standard marking.

CHARACTERISTIC CURVE AND ACOUSTICS AT 1.2KG/M³



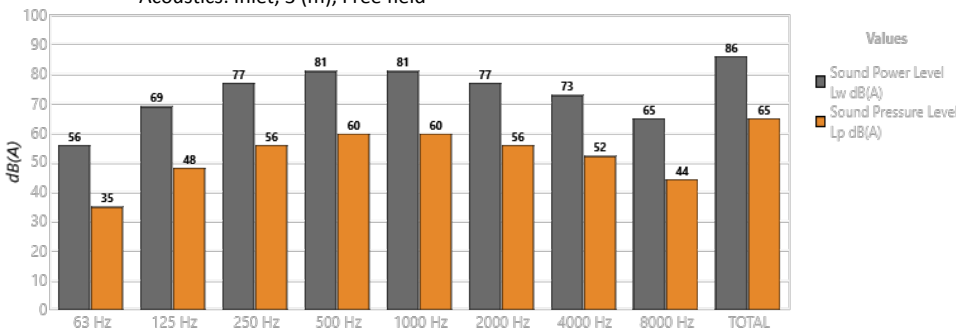
Design Point

Q (m³/h)	
Ps (Pa)	

Service Point (SP)

Q (m³/h)	-
Ps (Pa)	-
Pd (Pa)	-
Pt (Pa)	-

Acoustics: Inlet, 3 (m), Free field



Band	Lw dB(A)	Lp dB(A)
63 Hz	56	35
125 Hz	69	48
250 Hz	77	56
500 Hz	81	60
1000 Hz	81	60
2000 Hz	77	56
4000 Hz	73	52
8000 Hz	65	44
TOTAL	86	65

TECHNICAL CHARACTERISTICS

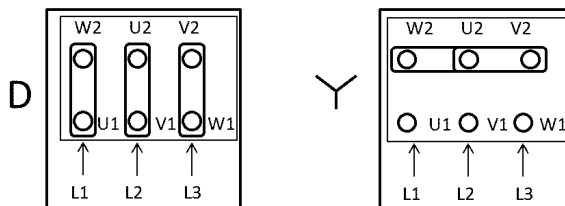
Airflow maximum (m ³ /h)	950
Speed (rpm)	2810
Maximum static pressure (Pa)	539.2
Maximum total pressure (Pa)	539.2

ERP

Remarks	ErP: Exclude. ATEX
---------	--------------------

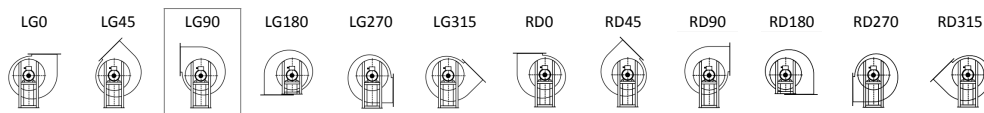
MOTOR DATA

Rated Mechanical Power (kW)	0.37
Hz/phases	50/3
Motor (rpm)	2791
Poles	2P
Max. current (A) 380-415 V Y	0.93
Max. current (A) 220-240 V D	1.62
Motor protection	IP65
Motor frame size	63C



Data can change, please check motor plate

FAN POSITIONS



LG90: Standard orientation

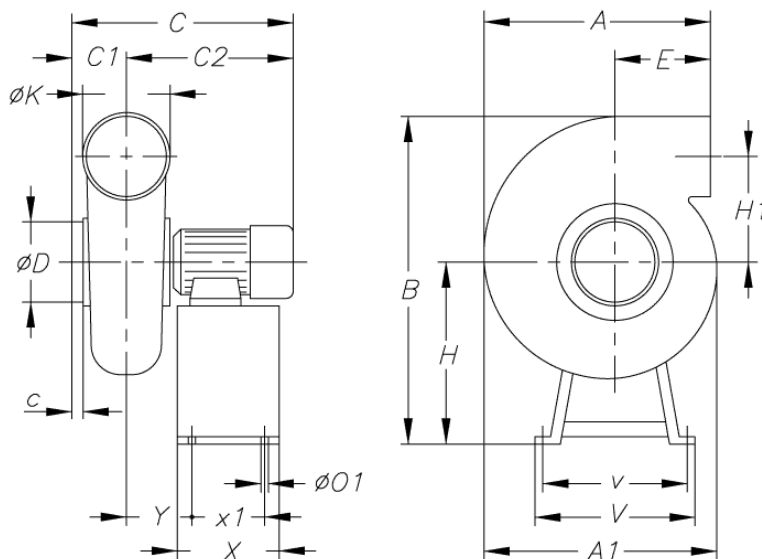
DIMENSIONS

A	A1	B	C	C1	C2	c	øD	E	H	H1	øK	øO1	V
307	335	521	360	100	260	30	125	100	281	177.5	125	8	355

v	X	x1	Y
335	180	160	90

Dimensions without explicitly defined units are shown in millimeters (mm). Dimensions depending on the motor are approximate

Approx. weight (kg)	34.5
---------------------	------



AVAILABLE ACCESSORIES

General accessories available

INT-KG-
20/3CA

AET



S

INT/ATEX
16/3CA

Inlet accessories available

Inlet accessories not available

Outlet accessories available

Outlet accessories not available

It must be checked that the accessory is suitable for the fan model

CPV/ATEX-815-4T/2G EX EB

Code: 1008045



Centrifugal fans made of corrosion-proof plastic material, with ATEX 2G or 2D certification and Ex db, Ex eb or Ex tb motor

Centrifugal single inlet fans made of ATEX antistatic plastic material. ATEX 2G or 2D certification with flameproof Ex db, increased safety Ex eb or dust ignition proof Ex tb motor to work in explosive gas or dust atmospheres.



Fan:

- Casing made of ATEX antistatic plastic material.
- Forward curved impeller, in ATEX antistatic plastic material.
- Maximum temperature of air to be carried: -25 °C +70 °C.
- Standard marking with flameproof motor (Ex db): II 2G Ex h IIB T4 Gb.
- Standard marking with increased safety motor (Ex eb): II 2G Ex h IIB T3 Gb.
- Standard marking with motor for dust ignition proof (Ex tb): II 2D Ex h IIIC T135 °C Db.

Motor:

- Class F motors with ball bearings, IP55 protection. ATEX certification flameproof Ex db, increased safety Ex eb or dust ignition proof Ex tb.
- Three-phase 230/400 V 50 Hz (up to 4 kW) and 400/690 V 50 Hz (powers greater than 4 kW).
- Working temperature: -20 °C +40 °C.

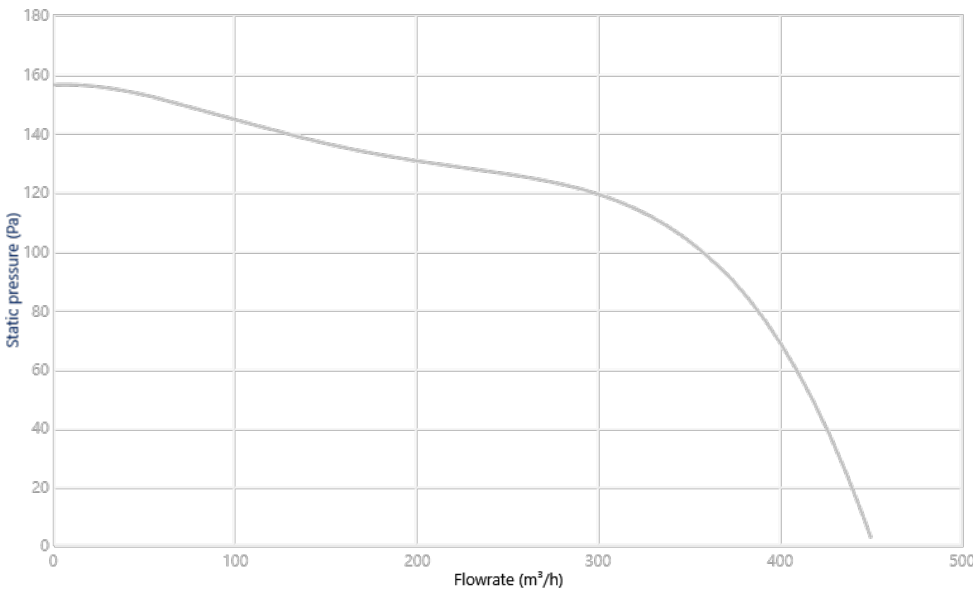
Finish:

- Anti-corrosive in ATEX plastic material.

On request:

- Motors with built-in PTC.
- Special windings for different voltages and frequencies.
- ATEX construction for flammable dust.
- ATEX fan with greater protection than the standard marking.

CHARACTERISTIC CURVE AND ACOUSTICS AT 1.2KG/M³



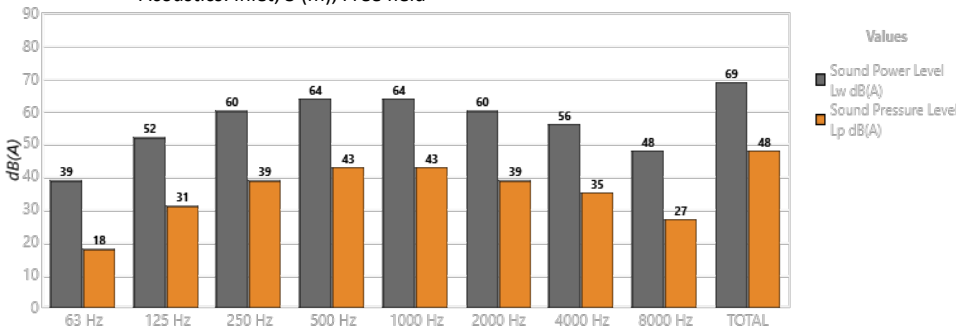
Design Point

Q (m³/h)	
Ps (Pa)	

Service Point (SP)

Q (m³/h)	-
Ps (Pa)	-
Pd (Pa)	-
Pt (Pa)	-

Acoustics: Inlet, 3 (m), Free field



Band	Lw dB(A)	Lp dB(A)
63 Hz	39	18
125 Hz	52	31
250 Hz	60	39
500 Hz	64	43
1000 Hz	64	43
2000 Hz	60	39
4000 Hz	56	35
8000 Hz	48	27
TOTAL	69	48

TECHNICAL CHARACTERISTICS

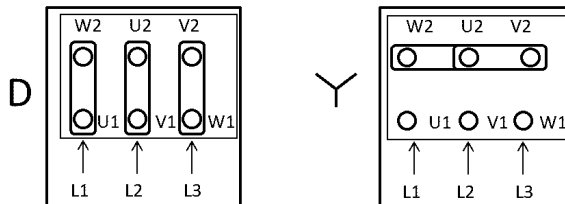
Airflow maximum (m ³ /h)	450
Speed (rpm)	1360
Maximum static pressure (Pa)	156.2
Maximum total pressure (Pa)	156.2

ERP

Remarks	ErP: Exclude. ATEX
---------	--------------------

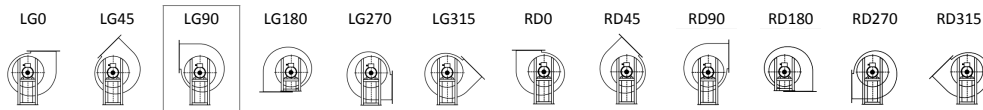
MOTOR DATA

Rated Mechanical Power (kW)	0.25
Hz/phases	50/3
Motor (rpm)	1380
Poles	4P
Max. current (A) 380-415 V Y	0.72
Max. current (A) 220-240 V D	1.25
Motor protection	IP65
Motor frame size	63C



Data can change, please check motor plate

FAN POSITIONS



LG90: Standard orientation

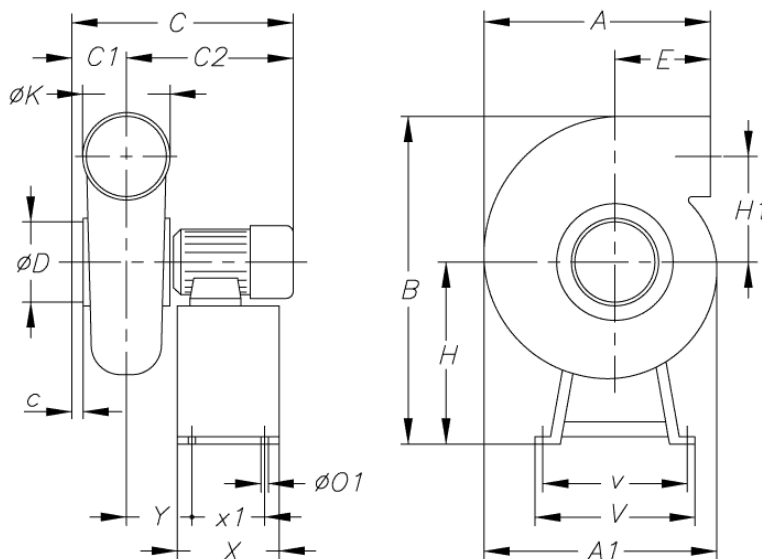
DIMENSIONS

A	A1	B	C	C1	C2	c	øD	E	H	H1	øK	øO1	V
307	335	521	360	100	260	30	125	100	281	177.5	125	8	355

v	X	x1	Y
335	180	160	90

Dimensions without explicitly defined units are shown in millimeters (mm). Dimensions depending on the motor are approximate

Approx. weight (kg)	34.5
---------------------	------



AVAILABLE ACCESSORIES

General accessories available



INT-KG-
20/3CA



AET



S



INT/ATEX
16/3CA

Inlet accessories available

Inlet accessories not available

Outlet accessories available

Outlet accessories not available

It must be checked that the accessory is suitable for the fan model

CPV/ATEX-1020-2T/2G EX EB

Code: 1008051



Centrifugal fans made of corrosion-proof plastic material, with ATEX 2G or 2D certification and Ex db, Ex eb or Ex tb motor

Centrifugal single inlet fans made of ATEX antistatic plastic material. ATEX 2G or 2D certification with flameproof Ex db, increased safety Ex eb or dust ignition proof Ex tb motor to work in explosive gas or dust atmospheres.



Fan:

- Casing made of ATEX antistatic plastic material.
- Forward curved impeller, in ATEX antistatic plastic material.
- Maximum temperature of air to be carried: -25 °C +70 °C.
- Standard marking with flameproof motor (Ex db): II 2G Ex h IIB T4 Gb.
- Standard marking with increased safety motor (Ex eb): II 2G Ex h IIB T3 Gb.
- Standard marking with motor for dust ignition proof (Ex tb): II 2D Ex h IIIC T135 °C Db.

Motor:

- Class F motors with ball bearings, IP55 protection. ATEX certification flameproof Ex db, increased safety Ex eb or dust ignition proof Ex tb.
- Three-phase 230/400 V 50 Hz (up to 4 kW) and 400/690 V 50 Hz (powers greater than 4 kW).
- Working temperature: -20 °C +40 °C.

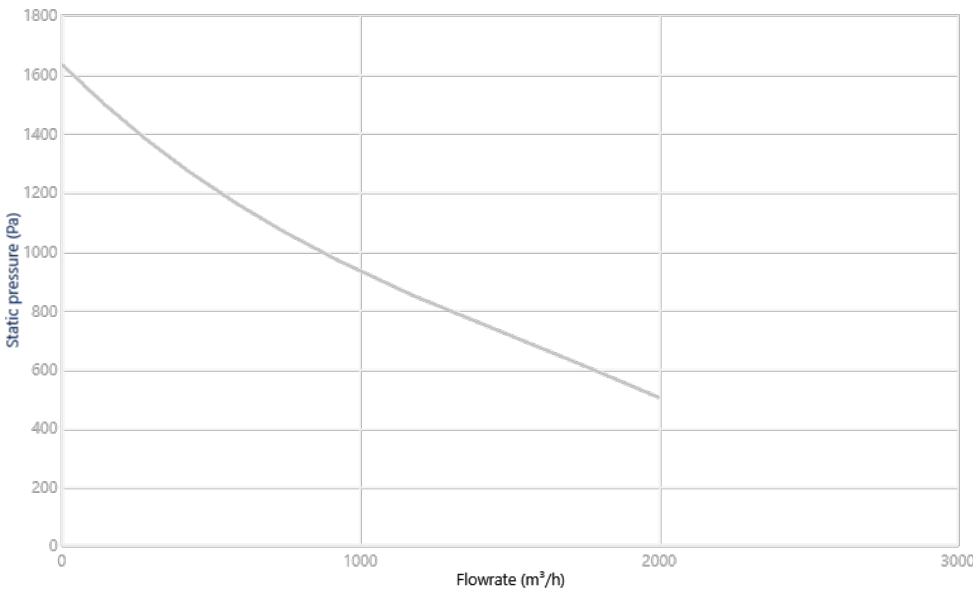
Finish:

- Anti-corrosive in ATEX plastic material.

On request:

- Motors with built-in PTC.
- Special windings for different voltages and frequencies.
- ATEX construction for flammable dust.
- ATEX fan with greater protection than the standard marking.

CHARACTERISTIC CURVE AND ACOUSTICS AT 1.2KG/M³

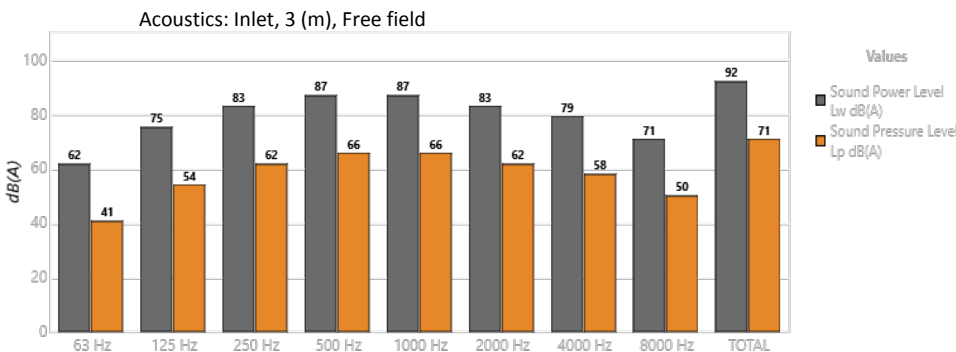


Design Point

Q (m³/h)	
Ps (Pa)	

Service Point (SP)

Q (m³/h)	-
Ps (Pa)	-
Pd (Pa)	-
Pt (Pa)	-



Band	Lw dB(A)	Lp dB(A)
63 Hz	62	41
125 Hz	75	54
250 Hz	83	62
500 Hz	87	66
1000 Hz	87	66
2000 Hz	83	62
4000 Hz	79	58
8000 Hz	71	50
TOTAL	92	71

TECHNICAL CHARACTERISTICS

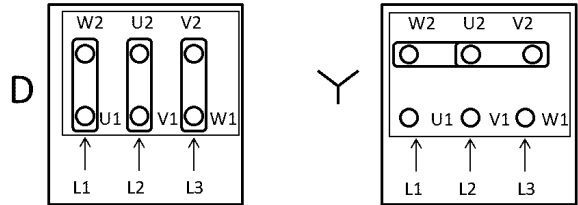
Airflow maximum (m ³ /h)	2000
Speed (rpm)	2800
Maximum static pressure (Pa)	1630
Maximum total pressure (Pa)	1630

ERP

Remarks	ErP: Exclude. ATEX
---------	--------------------

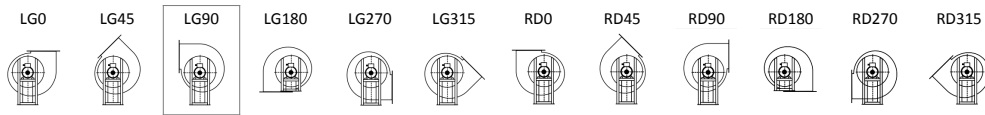
MOTOR DATA

Rated Mechanical Power (kW)	0.75
Hz/phases	50/3
Motor (rpm)	2892
Poles	2P
Max. current (A) 380-415 V Y	1.74
Max. current (A) 220-240 V D	3.03
Motor protection	IP65
Motor frame size	80A



Data can change, please check motor plate

FAN POSITIONS



LG90: Standard orientation

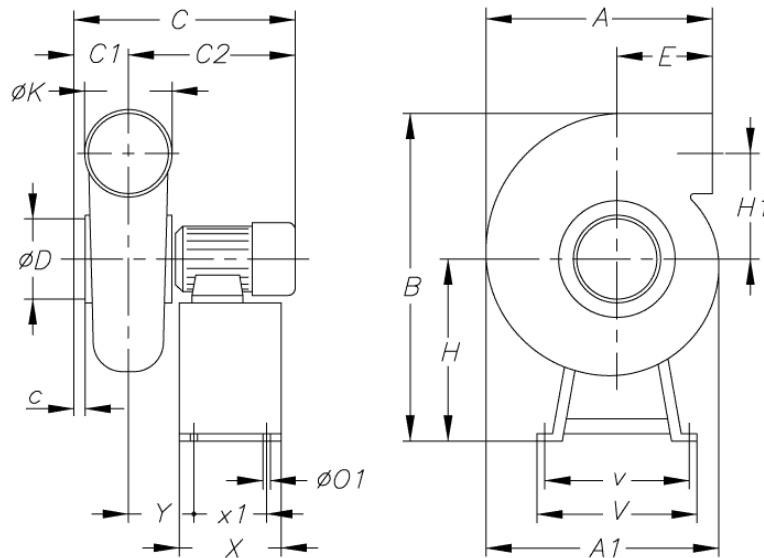
DIMENSIONS

A	A1	B	C	C1	C2	c	øD	E	H	H1	øK	øO1	V
340	397	593	445.5	116	329.5	32	160	100	290	223	160	8	355

v	X	x1	Y
335	180	160	127.5

Dimensions without explicitly defined units are shown in millimeters (mm). Dimensions depending on the motor are approximate

Approx. weight (kg)	14
---------------------	----



AVAILABLE ACCESSORIES

General accessories available

INT-KG-
20/3CA

AET



S

INT/ATEX
16/3CA

Inlet accessories available

Inlet accessories not available

Outlet accessories available

Outlet accessories not available

It must be checked that the accessory is suitable for the fan model

CPV/ATEX-1020-4T/2G EX EB

Code: 1008046



Centrifugal fans made of corrosion-proof plastic material, with ATEX 2G or 2D certification and Ex db, Ex eb or Ex tb motor

Centrifugal single inlet fans made of ATEX antistatic plastic material. ATEX 2G or 2D certification with flameproof Ex db, increased safety Ex eb or dust ignition proof Ex tb motor to work in explosive gas or dust atmospheres.



Fan:

- Casing made of ATEX antistatic plastic material.
- Forward curved impeller, in ATEX antistatic plastic material.
- Maximum temperature of air to be carried: -25 °C +70 °C.
- Standard marking with flameproof motor (Ex db): II 2G Ex h IIB T4 Gb.
- Standard marking with increased safety motor (Ex eb): II 2G Ex h IIB T3 Gb.
- Standard marking with motor for dust ignition proof (Ex tb): II 2D Ex h IIIC T135 °C Db.

Motor:

- Class F motors with ball bearings, IP55 protection. ATEX certification flameproof Ex db, increased safety Ex eb or dust ignition proof Ex tb.
- Three-phase 230/400 V 50 Hz (up to 4 kW) and 400/690 V 50 Hz (powers greater than 4 kW).
- Working temperature: -20 °C +40 °C.

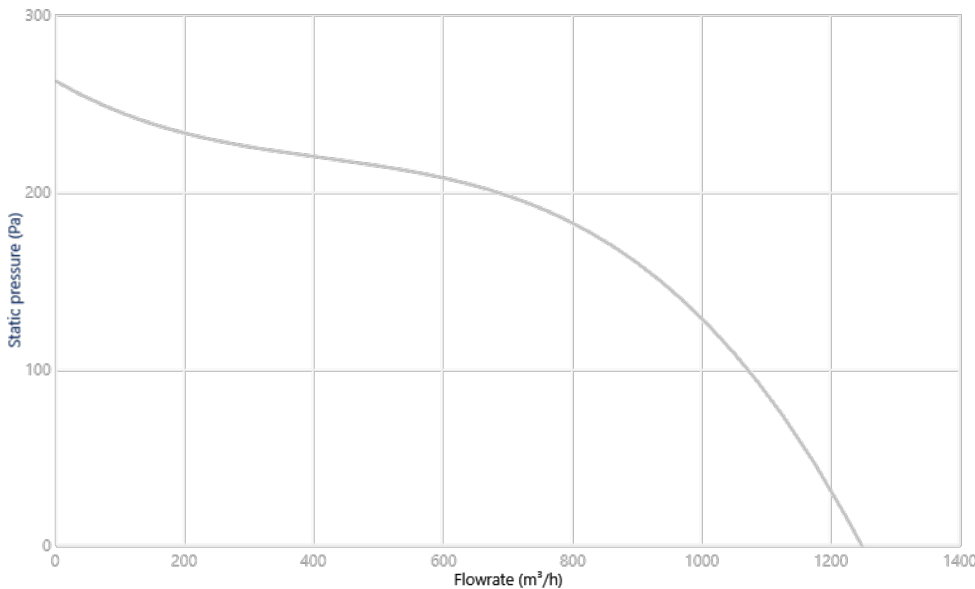
Finish:

- Anti-corrosive in ATEX plastic material.

On request:

- Motors with built-in PTC.
- Special windings for different voltages and frequencies.
- ATEX construction for flammable dust.
- ATEX fan with greater protection than the standard marking.

CHARACTERISTIC CURVE AND ACOUSTICS AT 1.2KG/M³

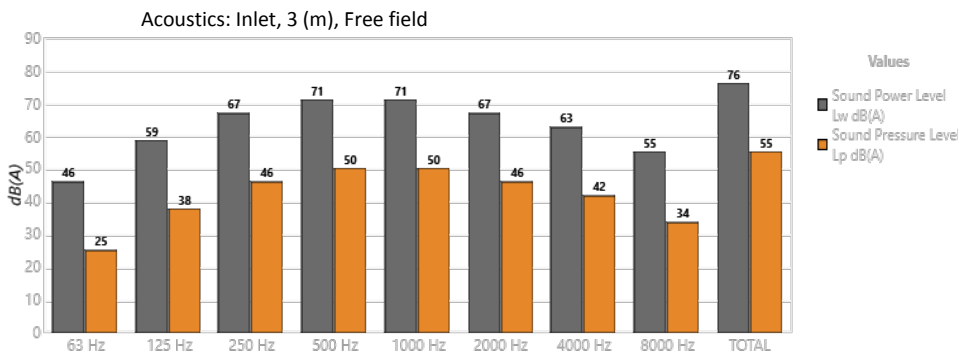


Design Point

Q (m³/h)	
Ps (Pa)	

Service Point (SP)

Q (m³/h)	-
Ps (Pa)	-
Pd (Pa)	-
Pt (Pa)	-



Band	Lw dB(A)	Lp dB(A)
63 Hz	46	25
125 Hz	59	38
250 Hz	67	46
500 Hz	71	50
1000 Hz	71	50
2000 Hz	67	46
4000 Hz	63	42
8000 Hz	55	34
TOTAL	76	55

TECHNICAL CHARACTERISTICS

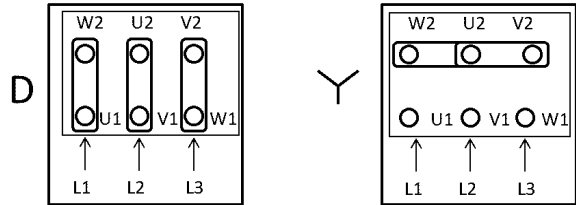
Airflow maximum (m ³ /h)	1250
Speed (rpm)	1360
Maximum static pressure (Pa)	262.6
Maximum total pressure (Pa)	262.6

ERP

Remarks	ErP: Exclude. ATEX
---------	--------------------

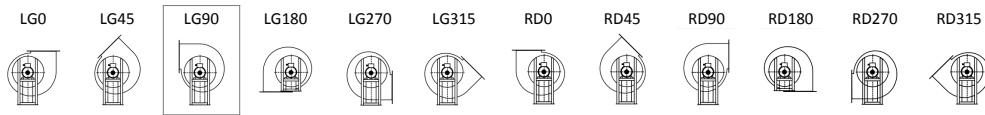
MOTOR DATA

Rated Mechanical Power (kW)	0.25
Hz/phases	50/3
Motor (rpm)	1380
Poles	4P
Max. current (A) 380-415 V Y	0.72
Max. current (A) 220-240 V D	1.25
Motor protection	IP65
Motor frame size	63C



Data can change, please check motor plate

FAN POSITIONS



LG90: Standard orientation

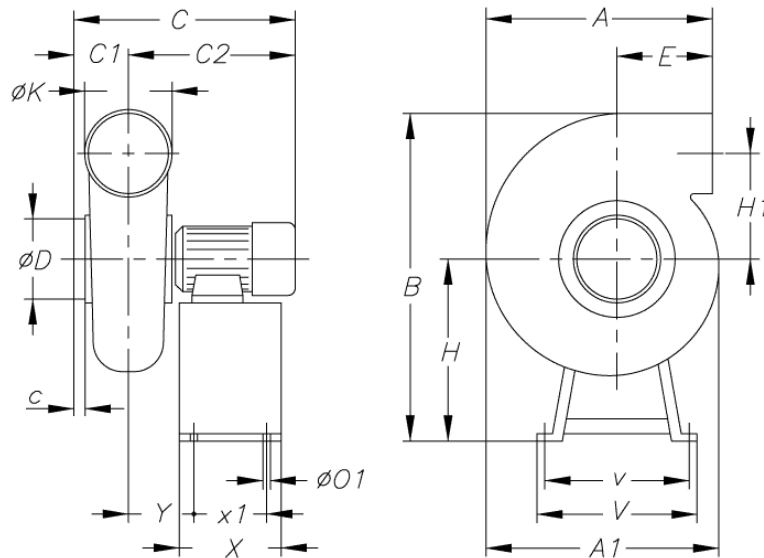
DIMENSIONS

A	A1	B	C	C1	C2	c	øD	E	H	H1	øK	øO1	V
340	397	584	422.5	116	306.5	32	160	100	281	223	160	8	355

v	X	x1	Y
335	180	160	122.5

Dimensions without explicitly defined units are shown in millimeters (mm). Dimensions depending on the motor are approximate

Approx. weight (kg)	14
---------------------	----



AVAILABLE ACCESSORIES

General accessories available

INT-KG-
20/3CA

AET



S

INT/ATEX
16/3CA

Inlet accessories available

Inlet accessories not available

Outlet accessories available

Outlet accessories not available

It must be checked that the accessory is suitable for the fan model

CPV/ATEX-1020-6T/2G EX EB

Code: 1008047



Centrifugal fans made of corrosion-proof plastic material, with ATEX 2G or 2D certification and Ex db, Ex eb or Ex tb motor

Centrifugal single inlet fans made of ATEX antistatic plastic material. ATEX 2G or 2D certification with flameproof Ex db, increased safety Ex eb or dust ignition proof Ex tb motor to work in explosive gas or dust atmospheres.



Fan:

- Casing made of ATEX antistatic plastic material.
- Forward curved impeller, in ATEX antistatic plastic material.
- Maximum temperature of air to be carried: -25 °C +70 °C.
- Standard marking with flameproof motor (Ex db): II 2G Ex h IIB T4 Gb.
- Standard marking with increased safety motor (Ex eb): II 2G Ex h IIB T3 Gb.
- Standard marking with motor for dust ignition proof (Ex tb): II 2D Ex h IIIC T135 °C Db.

Motor:

- Class F motors with ball bearings, IP55 protection. ATEX certification flameproof Ex db, increased safety Ex eb or dust ignition proof Ex tb.
- Three-phase 230/400 V 50 Hz (up to 4 kW) and 400/690 V 50 Hz (powers greater than 4 kW).
- Working temperature: -20 °C +40 °C.

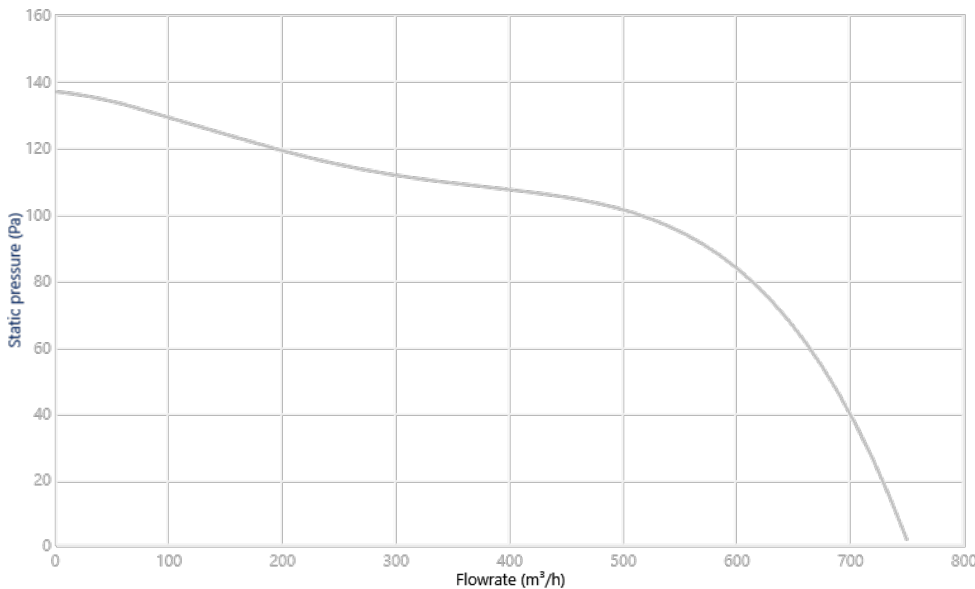
Finish:

- Anti-corrosive in ATEX plastic material.

On request:

- Motors with built-in PTC.
- Special windings for different voltages and frequencies.
- ATEX construction for flammable dust.
- ATEX fan with greater protection than the standard marking.

CHARACTERISTIC CURVE AND ACOUSTICS AT 1.2KG/M³



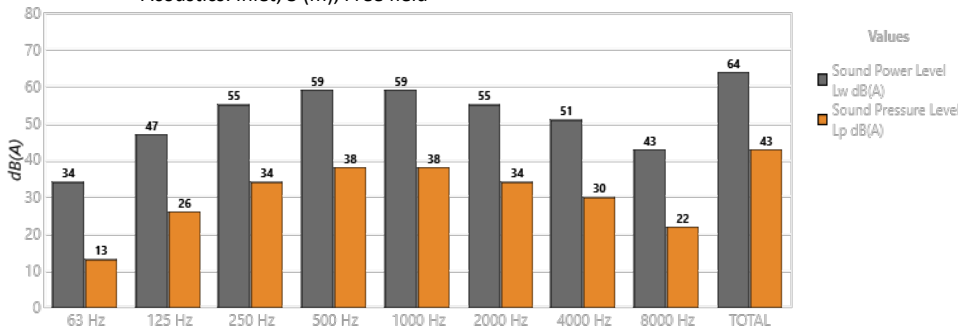
Design Point

Q (m³/h)	
Ps (Pa)	

Service Point (SP)

Q (m³/h)	-
Ps (Pa)	-
Pd (Pa)	-
Pt (Pa)	-

Acoustics: Inlet, 3 (m), Free field



Band	Lw dB(A)	Lp dB(A)
63 Hz	34	13
125 Hz	47	26
250 Hz	55	34
500 Hz	59	38
1000 Hz	59	38
2000 Hz	55	34
4000 Hz	51	30
8000 Hz	43	22
TOTAL	64	43

TECHNICAL CHARACTERISTICS

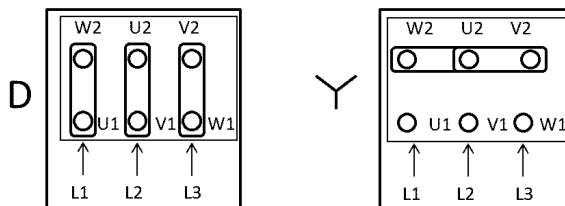
Airflow maximum (m ³ /h)	750
Speed (rpm)	880
Maximum static pressure (Pa)	136.8
Maximum total pressure (Pa)	136.8

ERP

Remarks	ErP: Exclude. ATEX
---------	--------------------

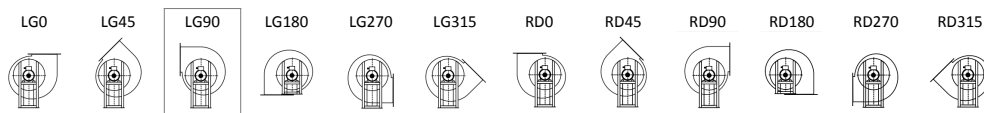
MOTOR DATA

Rated Mechanical Power (kW)	0.25
Hz/phases	50/3
Motor (rpm)	910
Poles	6P
Max. current (A) 380-415 V Y	1.4
Max. current (A) 220-240 V D	2.42
Motor protection	IP55
Motor frame size	71



Data can change, please check motor plate

FAN POSITIONS



LG90: Standard orientation

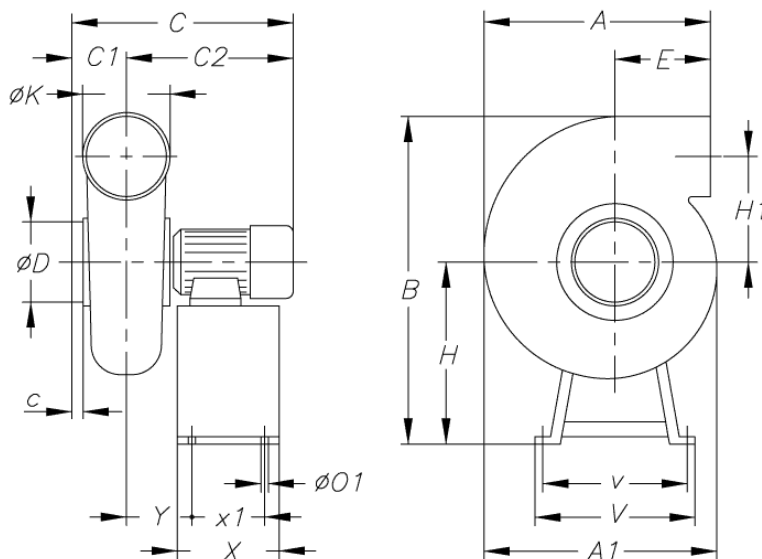
DIMENSIONS

A	A1	B	C	C1	C2	c	øD	E	H	H1	øK	øO1	V
340	397	584	422.5	116	306.5	32	160	100	281	223	160	8	355

v	X	x1	Y
335	180	160	122.5

Dimensions without explicitly defined units are shown in millimeters (mm). Dimensions depending on the motor are approximate

Approx. weight (kg)	19.5
---------------------	------



AVAILABLE ACCESSORIES

General accessories available

INT-KG-
20/3CA

AET



S

INT/ATEX
16/3CA

Inlet accessories available

Inlet accessories not available

Outlet accessories available

Outlet accessories not available

It must be checked that the accessory is suitable for the fan model

CPV/ATEX-1325-2T/2G EX EB

Code: 1008052



Centrifugal fans made of corrosion-proof plastic material, with ATEX 2G or 2D certification and Ex db, Ex eb or Ex tb motor

Centrifugal single inlet fans made of ATEX antistatic plastic material. ATEX 2G or 2D certification with flameproof Ex db, increased safety Ex eb or dust ignition proof Ex tb motor to work in explosive gas or dust atmospheres.



Fan:

- Casing made of ATEX antistatic plastic material.
- Forward curved impeller, in ATEX antistatic plastic material.
- Maximum temperature of air to be carried: -25 °C +70 °C.
- Standard marking with flameproof motor (Ex db): II 2G Ex h IIB T4 Gb.
- Standard marking with increased safety motor (Ex eb): II 2G Ex h IIB T3 Gb.
- Standard marking with motor for dust ignition proof (Ex tb): II 2D Ex h IIIC T135 °C Db.

Motor:

- Class F motors with ball bearings, IP55 protection. ATEX certification flameproof Ex db, increased safety Ex eb or dust ignition proof Ex tb.
- Three-phase 230/400 V 50 Hz (up to 4 kW) and 400/690 V 50 Hz (powers greater than 4 kW).
- Working temperature: -20 °C +40 °C.

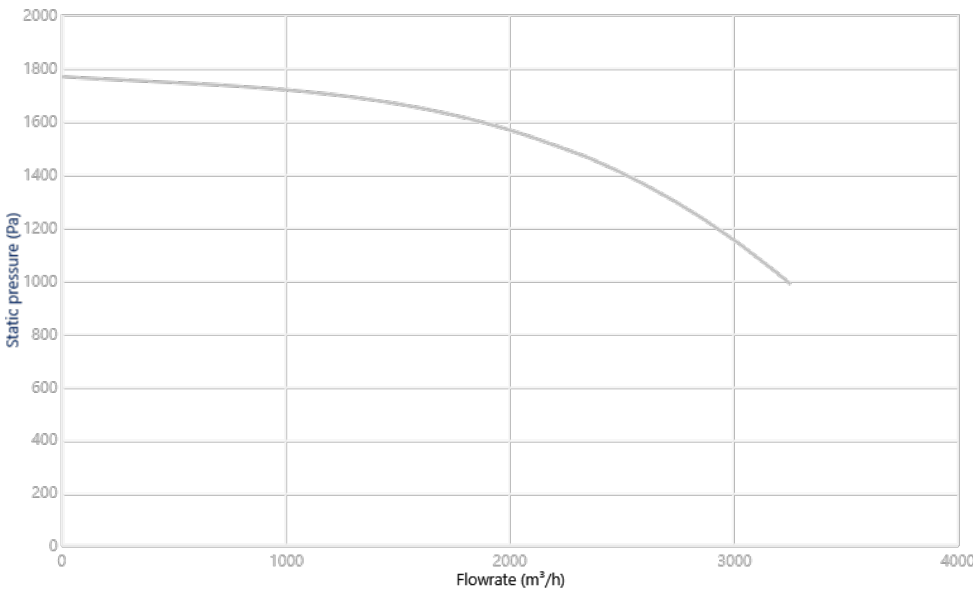
Finish:

- Anti-corrosive in ATEX plastic material.

On request:

- Motors with built-in PTC.
- Special windings for different voltages and frequencies.
- ATEX construction for flammable dust.
- ATEX fan with greater protection than the standard marking.

CHARACTERISTIC CURVE AND ACOUSTICS AT 1.2KG/M³



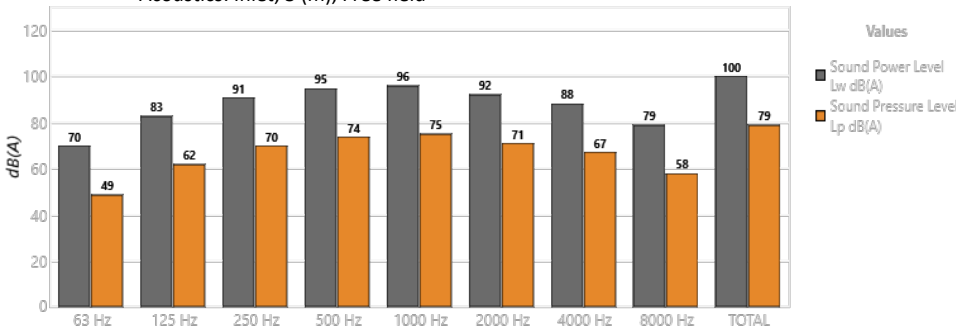
Design Point

Q (m³/h)	
Ps (Pa)	

Service Point (SP)

Q (m³/h)	-
Ps (Pa)	-
Pd (Pa)	-
Pt (Pa)	-

Acoustics: Inlet, 3 (m), Free field



Band	Lw dB(A)	Lp dB(A)
63 Hz	70	49
125 Hz	83	62
250 Hz	91	70
500 Hz	95	74
1000 Hz	96	75
2000 Hz	92	71
4000 Hz	88	67
8000 Hz	79	58
TOTAL	100	79

TECHNICAL CHARACTERISTICS

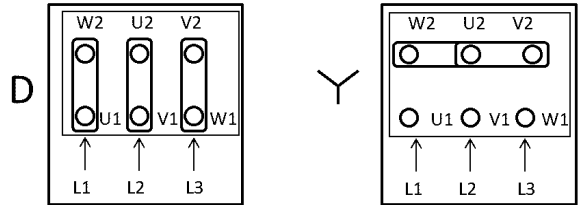
Airflow maximum (m ³ /h)	3250
Speed (rpm)	2850
Maximum static pressure (Pa)	1766
Maximum total pressure (Pa)	1771

ERP

Remarks	ErP: Exclude. ATEX
---------	--------------------

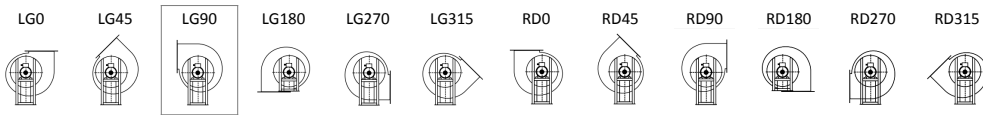
MOTOR DATA

Rated Mechanical Power (kW)	2.2
Hz/phases	50/3
Motor (rpm)	2918
Poles	2P
Max. current (A) 380-415 V Y	5.02
Max. current (A) 220-240 V D	8.73
Motor protection	IP65
Motor frame size	90L



Data can change, please check motor plate

FAN POSITIONS



LG90: Standard orientation

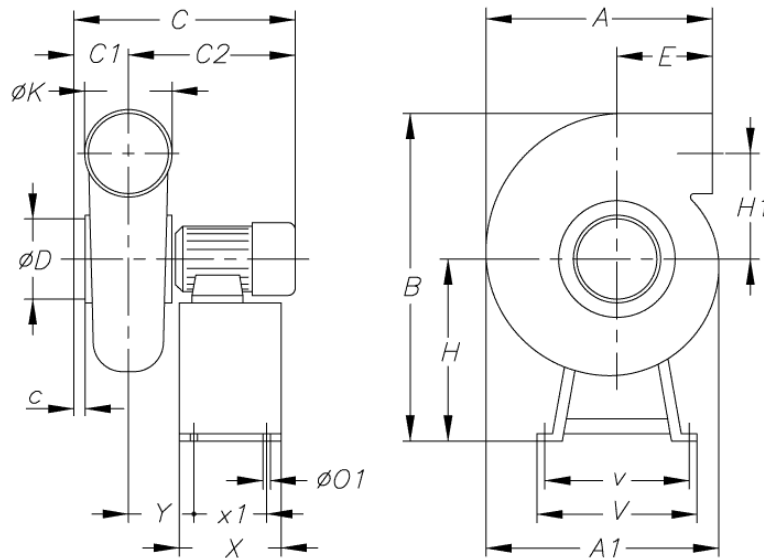
DIMENSIONS

A	A1	B	C	C1	C2	c	øD	E	H	H1	øK	øO1	V
413	505	735	494	130	364	35	200	103	370	265	200	8	400

v	X	x1	Y
380	180	160	125

Dimensions without explicitly defined units are shown in millimeters (mm). Dimensions depending on the motor are approximate

Approx. weight (kg)	19.5
---------------------	------



AVAILABLE ACCESSORIES

General accessories available



INT-KG-
20/3CA



AET



S



INT/ATEX
16/3CA

Inlet accessories available

Inlet accessories not available

Outlet accessories available

Outlet accessories not available

It must be checked that the accessory is suitable for the fan model

CPV/ATEX-1325-4T/2G EX EB

Code: 1008048



Centrifugal fans made of corrosion-proof plastic material, with ATEX 2G or 2D certification and Ex db, Ex eb or Ex tb motor

Centrifugal single inlet fans made of ATEX antistatic plastic material. ATEX 2G or 2D certification with flameproof Ex db, increased safety Ex eb or dust ignition proof Ex tb motor to work in explosive gas or dust atmospheres.



Fan:

- Casing made of ATEX antistatic plastic material.
- Forward curved impeller, in ATEX antistatic plastic material.
- Maximum temperature of air to be carried: -25 °C +70 °C.
- Standard marking with flameproof motor (Ex db): II 2G Ex h IIB T4 Gb.
- Standard marking with increased safety motor (Ex eb): II 2G Ex h IIB T3 Gb.
- Standard marking with motor for dust ignition proof (Ex tb): II 2D Ex h IIIC T135 °C Db.

Motor:

- Class F motors with ball bearings, IP55 protection. ATEX certification flameproof Ex db, increased safety Ex eb or dust ignition proof Ex tb.
- Three-phase 230/400 V 50 Hz (up to 4 kW) and 400/690 V 50 Hz (powers greater than 4 kW).
- Working temperature: -20 °C +40 °C.

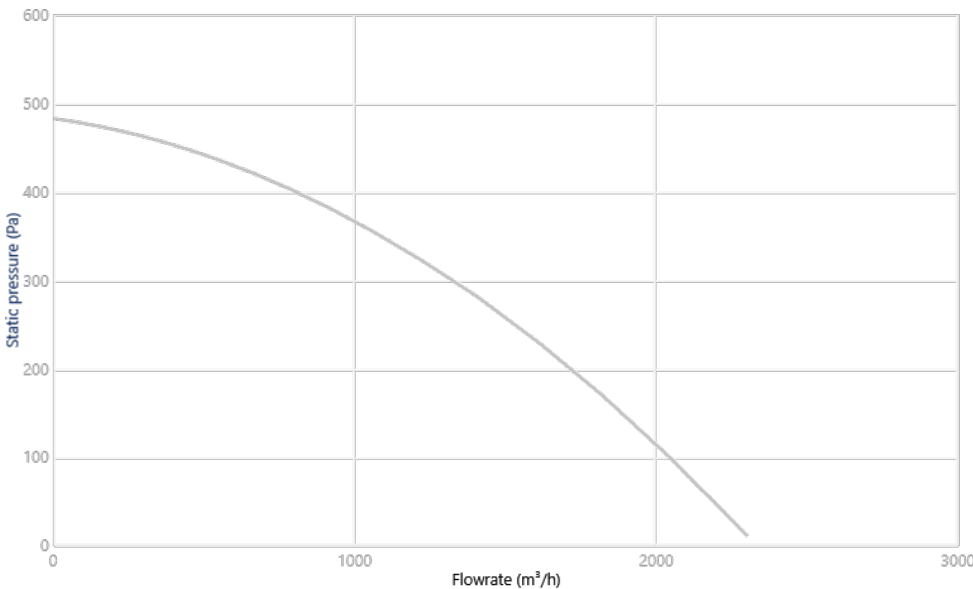
Finish:

- Anti-corrosive in ATEX plastic material.

On request:

- Motors with built-in PTC.
- Special windings for different voltages and frequencies.
- ATEX construction for flammable dust.
- ATEX fan with greater protection than the standard marking.

CHARACTERISTIC CURVE AND ACOUSTICS AT 1.2KG/M³



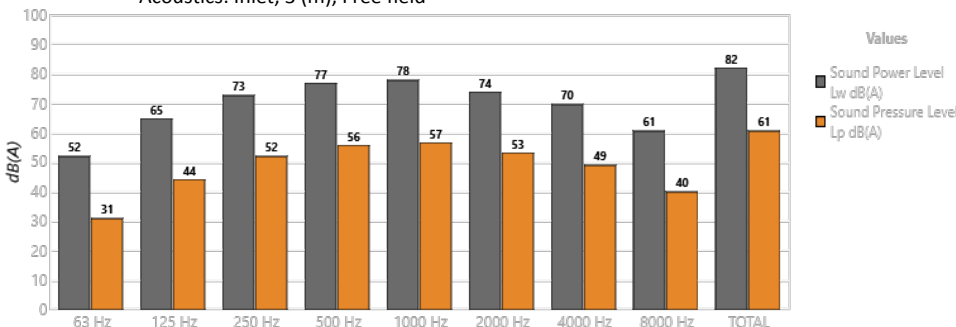
Design Point

Q (m³/h)	
Ps (Pa)	

Service Point (SP)

Q (m³/h)	-
Ps (Pa)	-
Pd (Pa)	-
Pt (Pa)	-

Acoustics: Inlet, 3 (m), Free field



Band	Lw dB(A)	Lp dB(A)
63 Hz	52	31
125 Hz	65	44
250 Hz	73	52
500 Hz	77	56
1000 Hz	78	57
2000 Hz	74	53
4000 Hz	70	49
8000 Hz	61	40
TOTAL	82	61

TECHNICAL CHARACTERISTICS

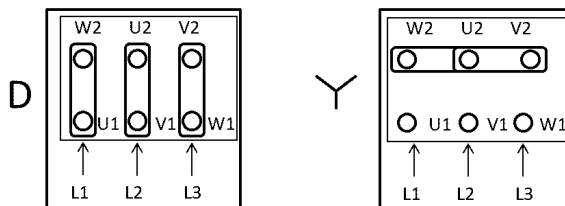
Airflow maximum (m ³ /h)	2300
Speed (rpm)	1360
Maximum static pressure (Pa)	482.5
Maximum total pressure (Pa)	482.5

ERP

Remarks	ErP: Exclude. ATEX
---------	--------------------

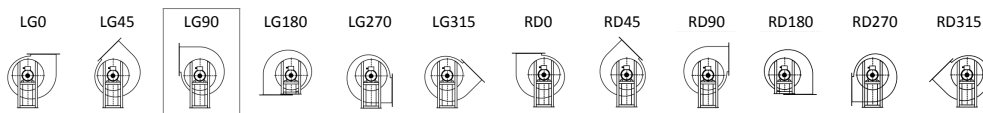
MOTOR DATA

Rated Mechanical Power (kW)	0.37
Hz/phases	50/3
Motor (rpm)	1370
Poles	4P
Max. current (A) 380-415 V Y	1.5
Max. current (A) 220-240 V D	2.6
Motor protection	IP55
Motor frame size	71



Data can change, please check motor plate

FAN POSITIONS



LG90: Standard orientation

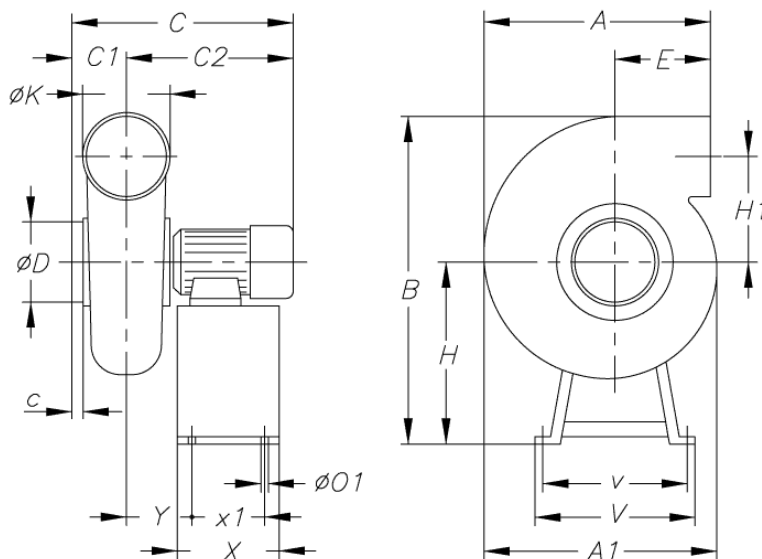
DIMENSIONS

A	A1	B	C	C1	C2	c	øD	E	H	H1	øK	øO1	V
413	505	716	432.5	130	302.5	35	200	103	351	265	200	8	400

v	X	x1	Y
380	180	160	113.5

Dimensions without explicitly defined units are shown in millimeters (mm). Dimensions depending on the motor are approximate

Approx. weight (kg)	19.5
---------------------	------



AVAILABLE ACCESSORIES

General accessories available

INT-KG-
20/3CA

AET



S

INT/ATEX
16/3CA

Inlet accessories available

Inlet accessories not available

Outlet accessories available

Outlet accessories not available

It must be checked that the accessory is suitable for the fan model

CPV/ATEX-1325-6T/2G EX EB

Code: 1008049



Centrifugal fans made of corrosion-proof plastic material, with ATEX 2G or 2D certification and Ex db, Ex eb or Ex tb motor

Centrifugal single inlet fans made of ATEX antistatic plastic material. ATEX 2G or 2D certification with flameproof Ex db, increased safety Ex eb or dust ignition proof Ex tb motor to work in explosive gas or dust atmospheres.



Fan:

- Casing made of ATEX antistatic plastic material.
- Forward curved impeller, in ATEX antistatic plastic material.
- Maximum temperature of air to be carried: -25 °C +70 °C.
- Standard marking with flameproof motor (Ex db): II 2G Ex h IIB T4 Gb.
- Standard marking with increased safety motor (Ex eb): II 2G Ex h IIB T3 Gb.
- Standard marking with motor for dust ignition proof (Ex tb): II 2D Ex h IIIC T135 °C Db.

Motor:

- Class F motors with ball bearings, IP55 protection. ATEX certification flameproof Ex db, increased safety Ex eb or dust ignition proof Ex tb.
- Three-phase 230/400 V 50 Hz (up to 4 kW) and 400/690 V 50 Hz (powers greater than 4 kW).
- Working temperature: -20 °C +40 °C.

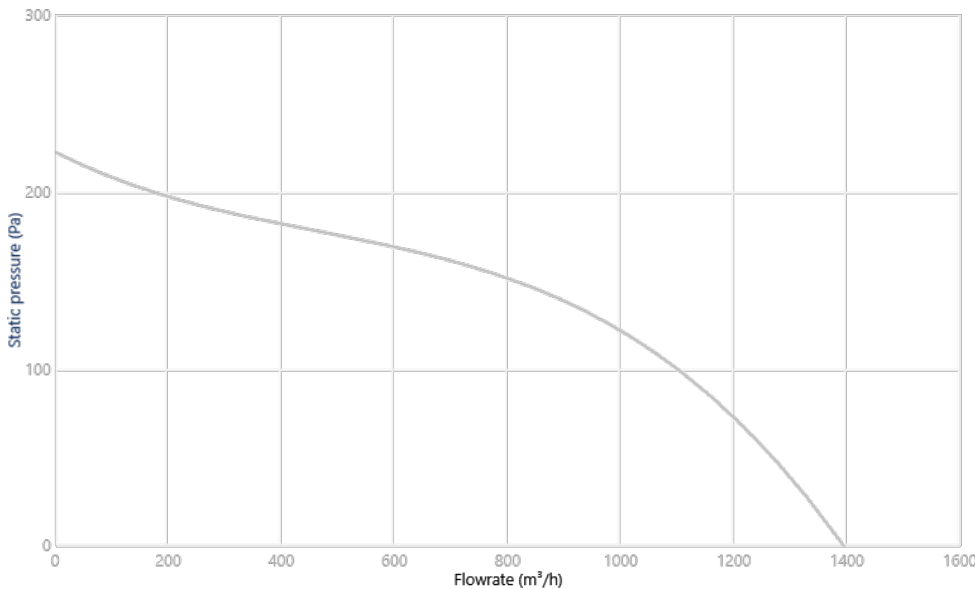
Finish:

- Anti-corrosive in ATEX plastic material.

On request:

- Motors with built-in PTC.
- Special windings for different voltages and frequencies.
- ATEX construction for flammable dust.
- ATEX fan with greater protection than the standard marking.

CHARACTERISTIC CURVE AND ACOUSTICS AT 1.2KG/M³

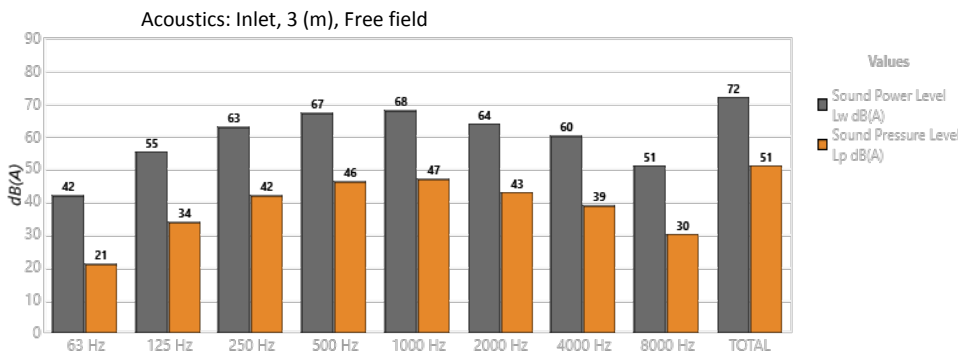


Design Point

Q (m³/h)	
Ps (Pa)	

Service Point (SP)

Q (m³/h)	-
Ps (Pa)	-
Pd (Pa)	-
Pt (Pa)	-



Band	Lw dB(A)	Lp dB(A)
63 Hz	42	21
125 Hz	55	34
250 Hz	63	42
500 Hz	67	46
1000 Hz	68	47
2000 Hz	64	43
4000 Hz	60	39
8000 Hz	51	30
TOTAL	72	51

TECHNICAL CHARACTERISTICS

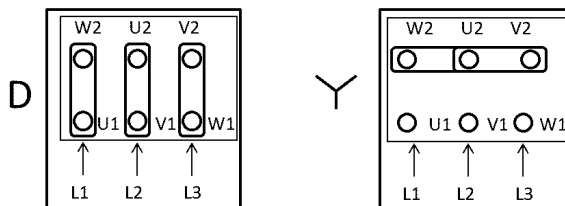
Airflow maximum (m ³ /h)	1400
Speed (rpm)	880
Maximum static pressure (Pa)	222.3
Maximum total pressure (Pa)	222.3

ERP

Remarks	ErP: Exclude. ATEX
---------	--------------------

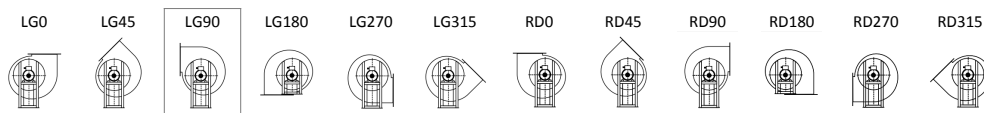
MOTOR DATA

Rated Mechanical Power (kW)	0.25
Hz/phases	50/3
Motor (rpm)	910
Poles	6P
Max. current (A) 380-415 V Y	1.4
Max. current (A) 220-240 V D	2.42
Motor protection	IP55
Motor frame size	71



Data can change, please check motor plate

FAN POSITIONS



LG90: Standard orientation

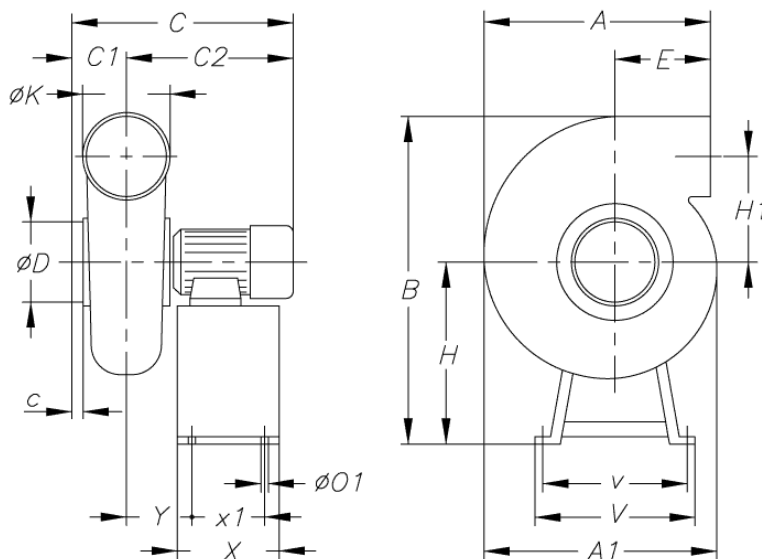
DIMENSIONS

A	A1	B	C	C1	C2	c	øD	E	H	H1	øK	øO1	V
413	505	716	432.5	130	302.5	35	200	103	351	265	200	8	400

v	X	x1	Y
380	180	160	113.5

Dimensions without explicitly defined units are shown in millimeters (mm). Dimensions depending on the motor are approximate

Approx. weight (kg)	27
---------------------	----



AVAILABLE ACCESSORIES

General accessories available

INT-KG-
20/3CA

AET



S

INT/ATEX
16/3CA

Inlet accessories available

Inlet accessories not available

Outlet accessories available

Outlet accessories not available

It must be checked that the accessory is suitable for the fan model

CPV/ATEX-1630-4T/2G EX EB

Code: 1008053



Centrifugal fans made of corrosion-proof plastic material, with ATEX 2G or 2D certification and Ex db, Ex eb or Ex tb motor

Centrifugal single inlet fans made of ATEX antistatic plastic material. ATEX 2G or 2D certification with flameproof Ex db, increased safety Ex eb or dust ignition proof Ex tb motor to work in explosive gas or dust atmospheres.



Fan:

- Casing made of ATEX antistatic plastic material.
- Forward curved impeller, in ATEX antistatic plastic material.
- Maximum temperature of air to be carried: -25 °C +70 °C.
- Standard marking with flameproof motor (Ex db): II 2G Ex h IIB T4 Gb.
- Standard marking with increased safety motor (Ex eb): II 2G Ex h IIB T3 Gb.
- Standard marking with motor for dust ignition proof (Ex tb): II 2D Ex h IIIC T135 °C Db.

Motor:

- Class F motors with ball bearings, IP55 protection. ATEX certification flameproof Ex db, increased safety Ex eb or dust ignition proof Ex tb.
- Three-phase 230/400 V 50 Hz (up to 4 kW) and 400/690 V 50 Hz (powers greater than 4 kW).
- Working temperature: -20 °C +40 °C.

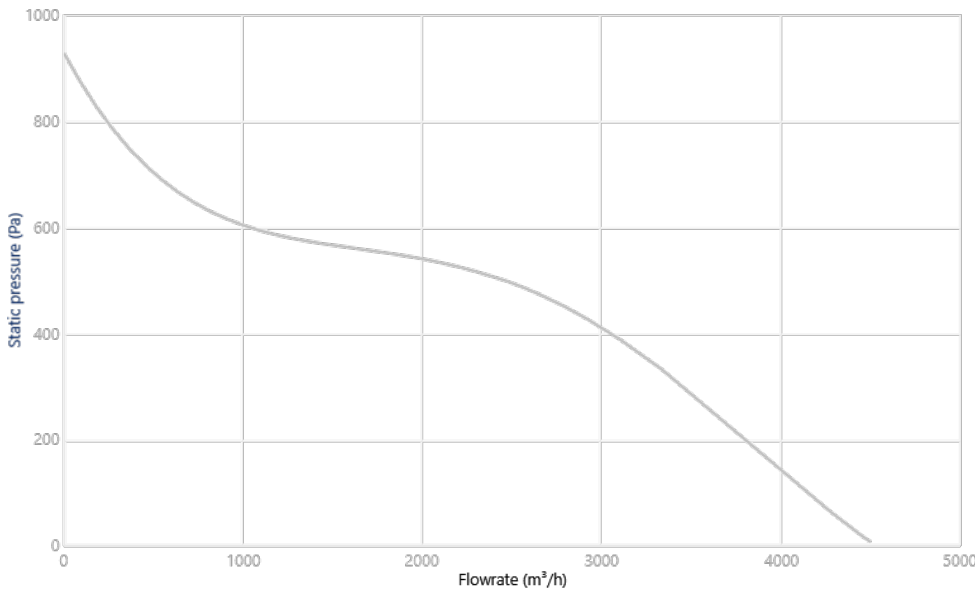
Finish:

- Anti-corrosive in ATEX plastic material.

On request:

- Motors with built-in PTC.
- Special windings for different voltages and frequencies.
- ATEX construction for flammable dust.
- ATEX fan with greater protection than the standard marking.

CHARACTERISTIC CURVE AND ACOUSTICS AT 1.2KG/M³



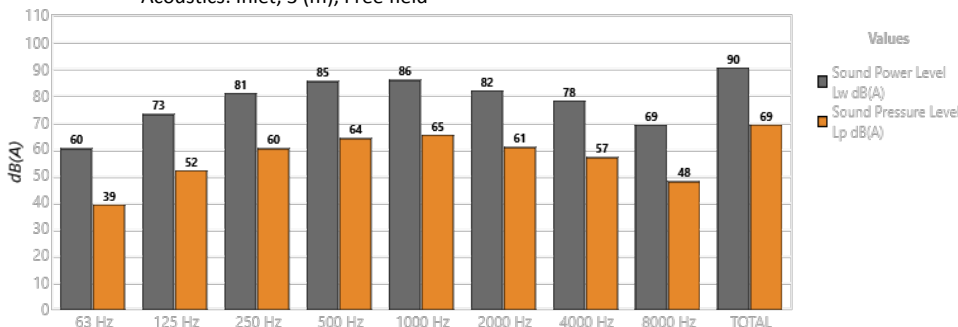
Design Point

Q (m³/h)	
Ps (Pa)	

Service Point (SP)

Q (m³/h)	-
Ps (Pa)	-
Pd (Pa)	-
Pt (Pa)	-

Acoustics: Inlet, 3 (m), Free field



Band	Lw dB(A)	Lp dB(A)
63 Hz	60	39
125 Hz	73	52
250 Hz	81	60
500 Hz	85	64
1000 Hz	86	65
2000 Hz	82	61
4000 Hz	78	57
8000 Hz	69	48
TOTAL	90	69

TECHNICAL CHARACTERISTICS

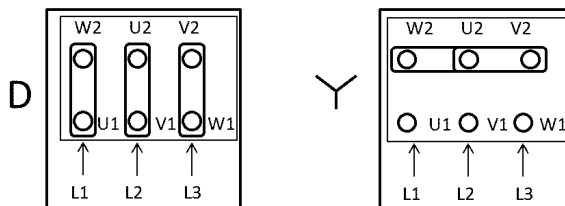
Airflow maximum (m ³ /h)	4500
Speed (rpm)	1420
Maximum static pressure (Pa)	927.1
Maximum total pressure (Pa)	927.1

ERP

Remarks	ErP: Exclude. ATEX
---------	--------------------

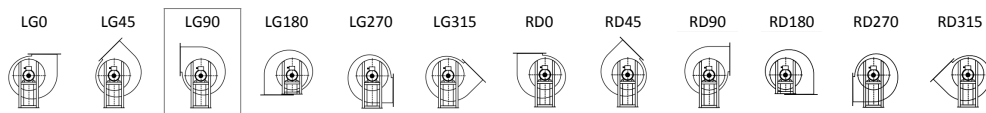
MOTOR DATA

Rated Mechanical Power (kW)	1.5
Hz/phases	50/3
Motor (rpm)	1400
Poles	4P
Max. current (A) 380-415 V Y	4
Max. current (A) 220-240 V D	6.93
Motor protection	IP55
Motor frame size	90L



Data can change, please check motor plate

FAN POSITIONS



LG90: Standard orientation

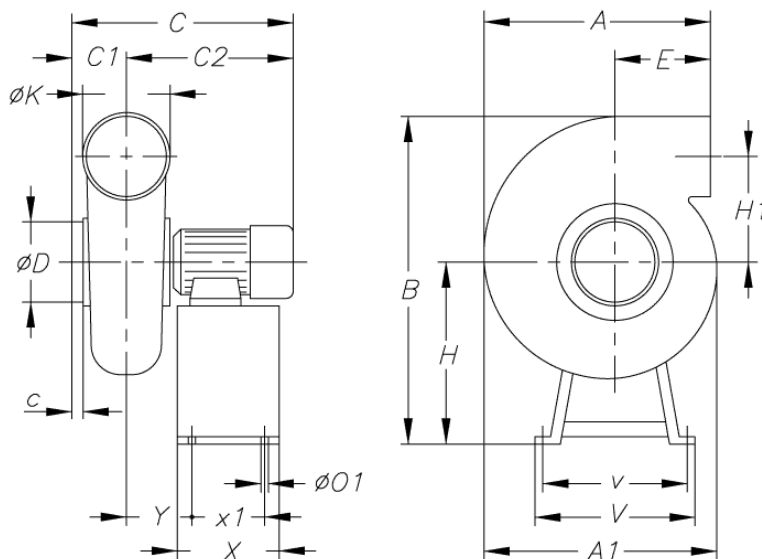
DIMENSIONS

A	A1	B	C	C1	C2	c	øD	E	H	H1	øK	øO1	V
480	602	890	536.5	145	391.5	35	250	117	440	323	250	8	450

v	X	x1	Y
430	240	220	142.5

Dimensions without explicitly defined units are shown in millimeters (mm). Dimensions depending on the motor are approximate

Approx. weight (kg)	27
---------------------	----



AVAILABLE ACCESSORIES

General accessories available

INT-KG-
20/3CA

AET



S

INT/ATEX
16/3CA

Inlet accessories available

Inlet accessories not available

Outlet accessories available

Outlet accessories not available

It must be checked that the accessory is suitable for the fan model