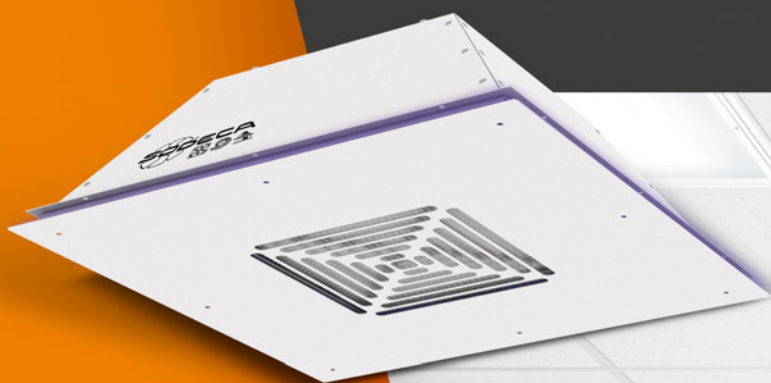




# UPT

CEILING UNITS FOR PURIFYING AND DISINFECTING AIR USING HEPA H14 FILTRATION

- HEPA H14 FILTER  
99.99% EFFICIENCY
- AC OR EC TECHNOLOGY  
MOTORS, DEPENDING  
ON MODEL
- EASY TO INSTALL  
ABOVE FALSE CEILINGS
- UVc GERMICIDAL  
CHAMBER DEPENDING  
ON THE MODEL



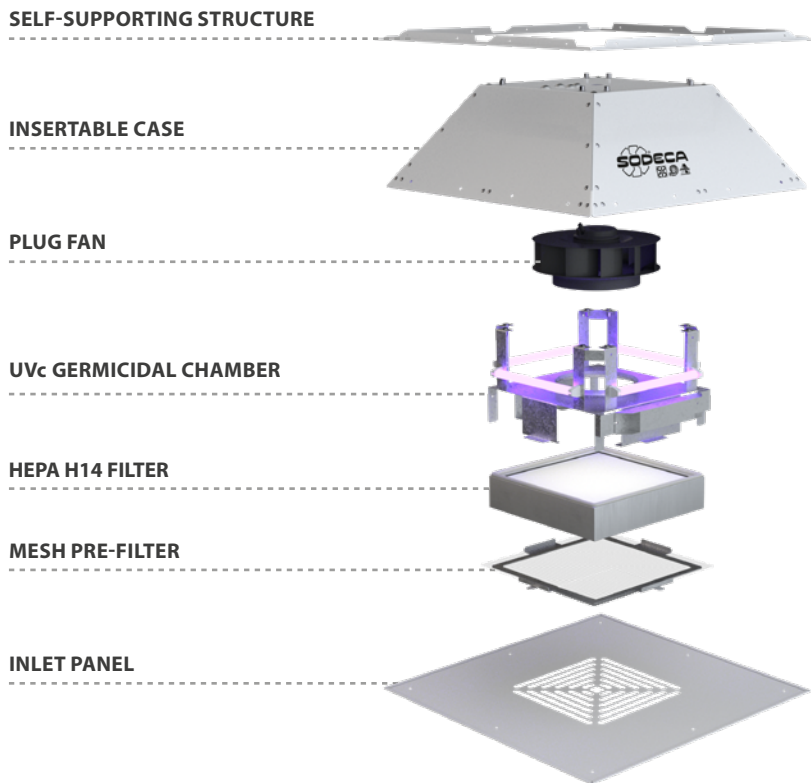
FILTRATION  
STAGES



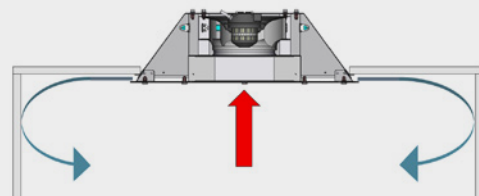


# UPT

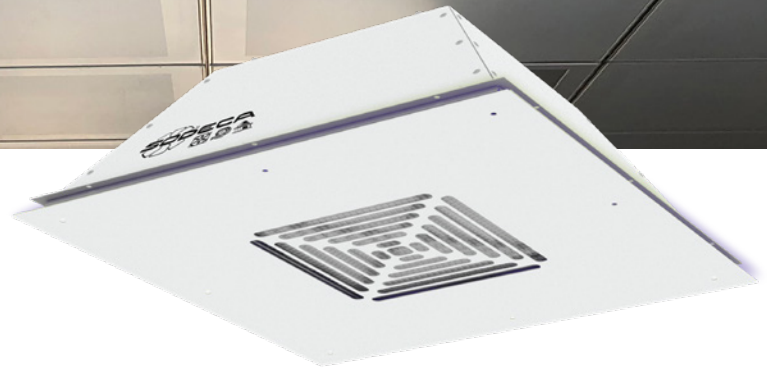
UPT series air purification and disinfection units are equipped with Plug Fans with AC or EC Technology motors, depending on model. These units have been specifically designed **to be installed above false ceilings in high occupancy areas.**



## HOW DOES IT WORK?



Stale internal air enters through the **inlet** panel, which is equipped with a washable pre-filter that retains large size particles. Then, the air passes through an **absolute HEPA H14 filter**, which retains 99.99% of solid particles. After going through these two filtration stages, the air passes through the **UVc ultraviolet germicidal chamber**, destroying all viruses and bacteria as well as other pathogens. Finally the air returns to the room, fully cleaned and disinfected.



### FALSE CEILINGS

Especially designed to be installed above false ceilings with removable 600 x 600 mm panels or in false ceilings made of plasterboard. Its design also allows it to be surface mounted.



### MINIMISES THE VISUAL IMPACT

Installation above a false ceiling minimises the visual impact of these purification units and increases the available space in the room below.



### SUITABLE FOR LARGE ROOMS

In large spaces we recommend installing several units, controlled by a single regulation system, for homogenisation of clean, bacteria free air.



### EASY TO MAINTAIN

The fan and filters can be easily accessed through the inlet panel, allowing quick and easy access for cleaning and maintenance.

## RECOMMENDED FOR

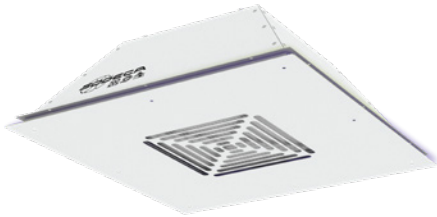
- Large office spaces
- Shopping centres
- Health centres
- Beauty salons
- Schools
- Gyms
- Lifts



# UPT



## Ceiling units for purifying and disinfecting air using HEPA H14 filtration



Ceiling units for purifying and disinfecting air, equipped with HEPA H14 filters and Plug Fans, with AC or EC Technology motors, depending on model, and with optional UVC germicidal chambers. These units have been especially designed to be installed above false ceilings in high occupancy areas.

### Characteristics:

- Structure designed for installation above false ceilings.
- Washable pre-filter.
- HEPA type filters with a filtration efficiency of 99.99%.
- UVC germicidal chamber, depending on model.
- Plug Fan with AC or EC Technology, depending on model.
- Backward-curved impeller.
- Inspection cover for maintenance and filter replacement.
- Low noise levels.

### Motor:

- EC Version: High efficiency EC Technology motors with external rotor, regulated by 0-10 V signal.
- AC Version: External rotor motors with built-in thermal protector, class F, with ball bearings, IP54 protection.

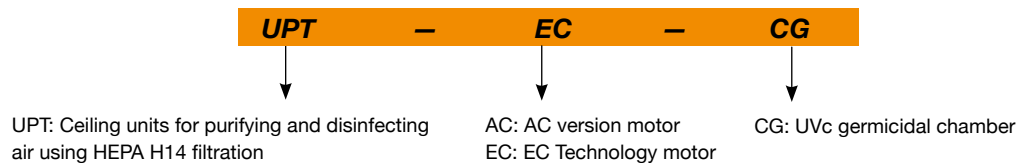
### Finish:

- Anti-corrosive polyester resin finish polymerised at 190°C, previously degreased by applying a phosphate-free nanotechnological treatment.
- Standard colour RAL 9003.

### On request:

- Available in any RAL colour.

## Order code



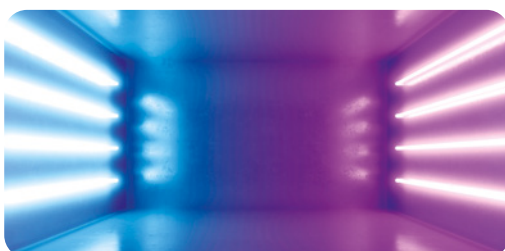
## Technical characteristics

Model	Maximum flow rate (m <sup>3</sup> /h)	Recommended effective area <sup>1</sup> (m <sup>2</sup> )	Speed (r/min)	Maximum power (W)	Power supply	Sound pressure level at 50% of maximum flow rate <sup>2</sup> dB(A)	Approx. weight (kg)
UPT AC	150	20	1410	60	200-240 V 50/60 Hz 1 Ph	33	10
UPT EC	350	45	2440	120	200-240 V 50/60 Hz 1 Ph	45	10
UPT AC-CG	150	20	1410	60	200-240 V 50/60 Hz 1 Ph	33	10
UPT EC-CG	350	45	2440	120	200-240 V 50/60 Hz 1 Ph	45	10

<sup>1</sup> Recommended area at 3 metre ceiling height. <sup>2</sup> Irradiated sound pressure level in dB(A) at a distance of 3 m.

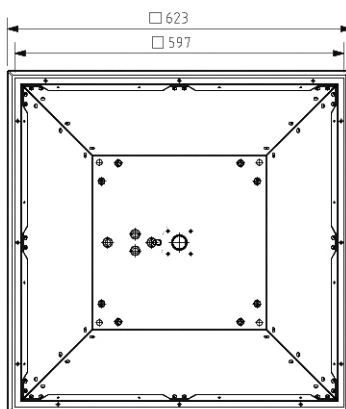
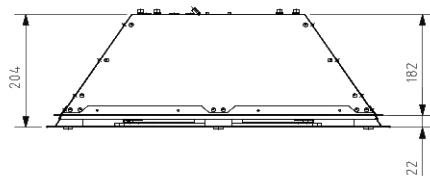
## Technical characteristics of the UVC germicidal chamber

Depending on the model, these purification units may incorporate a germicidal chamber utilising UVC ultraviolet lamps in a 254 nm spectrum, which is the most effective wave amplitude for deactivating most microorganisms, whereby they absorb short wavelength energy through their DNA and RNA. Refer to the specific document for a list of the types of viruses or bacteria that are affected by the radiation dose emitted inside the germicidal chamber.



Model	Number of lamps	Electric power (W)	UVC radiation power (W)	Radiation dose (mJ/cm <sup>2</sup> )
UPT AC-CG	4	44	11.2	12.4
UPT EC-CG	4	44	11.2	5.3

## Dimensions mm



## Accessories



CAP/EC



SI-PM2,5+VOC



SI-CO2+VOC



MICA-LITE/W



RAC WIFI

### Recessed WiFi controller for AC motors up to 300 W, with connections for auxiliary equipment

This controller allows fan speed adjustment and allows the germicidal chamber lamps to be turned on or off.

Additionally, it is equipped with WiFi connectivity for remote operation, which also allows function and time programming via the Smart Life application.